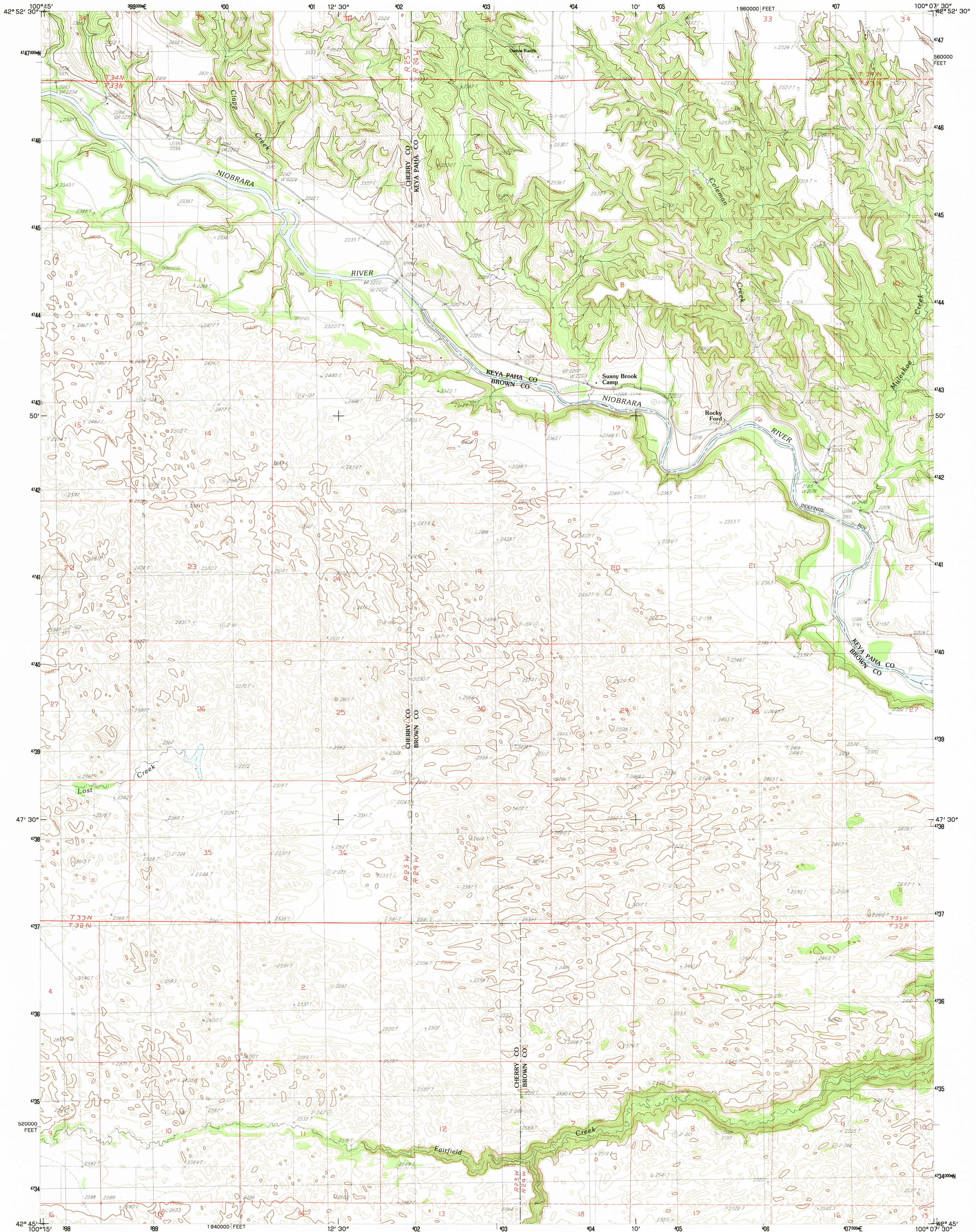


UNITED STATES
DEPARTMENT OF THE INTERIOR
GEOLOGICAL SURVEY

MULESHOE CREEK QUADRANGLE
NEBRASKA
7.5 MINUTE SERIES (TOPOGRAPHIC)



PRODUCED BY THE UNITED STATES GEOLOGICAL SURVEY
CONTROL BY USGS AND NOS/NOAA
COMPILED FROM AERIAL PHOTOGRAPHS TAKEN 1977
FIELD CHECKED 1980. MAP EDITED 1983
PROJECTION LAMBERT CONFORMAL CONIC
GRID: 1000-METER UNIVERSAL TRANSVERSE MERCATOR ZONE 18
10,000-FOOT STATE GRID TICKS NEBRASKA, NORTH ZONE
UTM GRID DECLINATION 0°48' WEST
1983 MAGNETIC NORTH DECLINATION 9°30' EAST
VERTICAL DATUM NATIONAL GEODETIC DATUM OF 1999
HORIZONTAL DATUM 1927 NORTH AMERICAN DATUM
To place on the predicted North American Datum of 1983,
move the projection lines as shown by dashed corner ticks
(6 meters north and 35 meters east)
There may be private inholdings within the boundaries of any
Federal and State reservations shown on this map

PROVISIONAL MAP
Produced from original
manuscript drawings. Information
shown as of date of
field check.

SCALE 1:24 000

1 0 1000 2000 3000 4000 5000 6000 7000 8000 9000 10 000

1 0 1000 2000 3000 4000 5000 6000 7000 8000 9000 10 000

FEET
KILOMETERS
METERS

CONTOUR INTERVAL 20 FEET

To convert feet to meters multiply by .3048
To convert meters to feet multiply by 3.2808

THIS MAP COMPLIES WITH NATIONAL MAP ACCURACY STANDARDS
FOR SALE BY U. S. GEOLOGICAL SURVEY, DENVER, COLORADO 80225, OR RESTON, VIRGINIA 22092

ROAD LEGEND

Improved Road
Unimproved Road
Trail

Interstate Route U. S. Route State Route

NEBRASKA

QUADRANGLE LOCATION

1	2	3	1 Sparks
2	3	4	2 Norden NW
3	4	5	3 Hayford Lake
4	5	6	4 Sparks SE
5	6	7	5 Norden
6	7	8	6 Arabia
7	8	9	7 Wood Lake
8	9	10	8 Wood Lake NE

ADJOINING 7.5 QUADRANGLE NAMES

MULESHOE CREEK, NEBRASKA
PROVISIONAL EDITION 1983

42100-G2-TF-024

RETURN TO:
USGS AND HISTORICAL MAP ARCHIVES