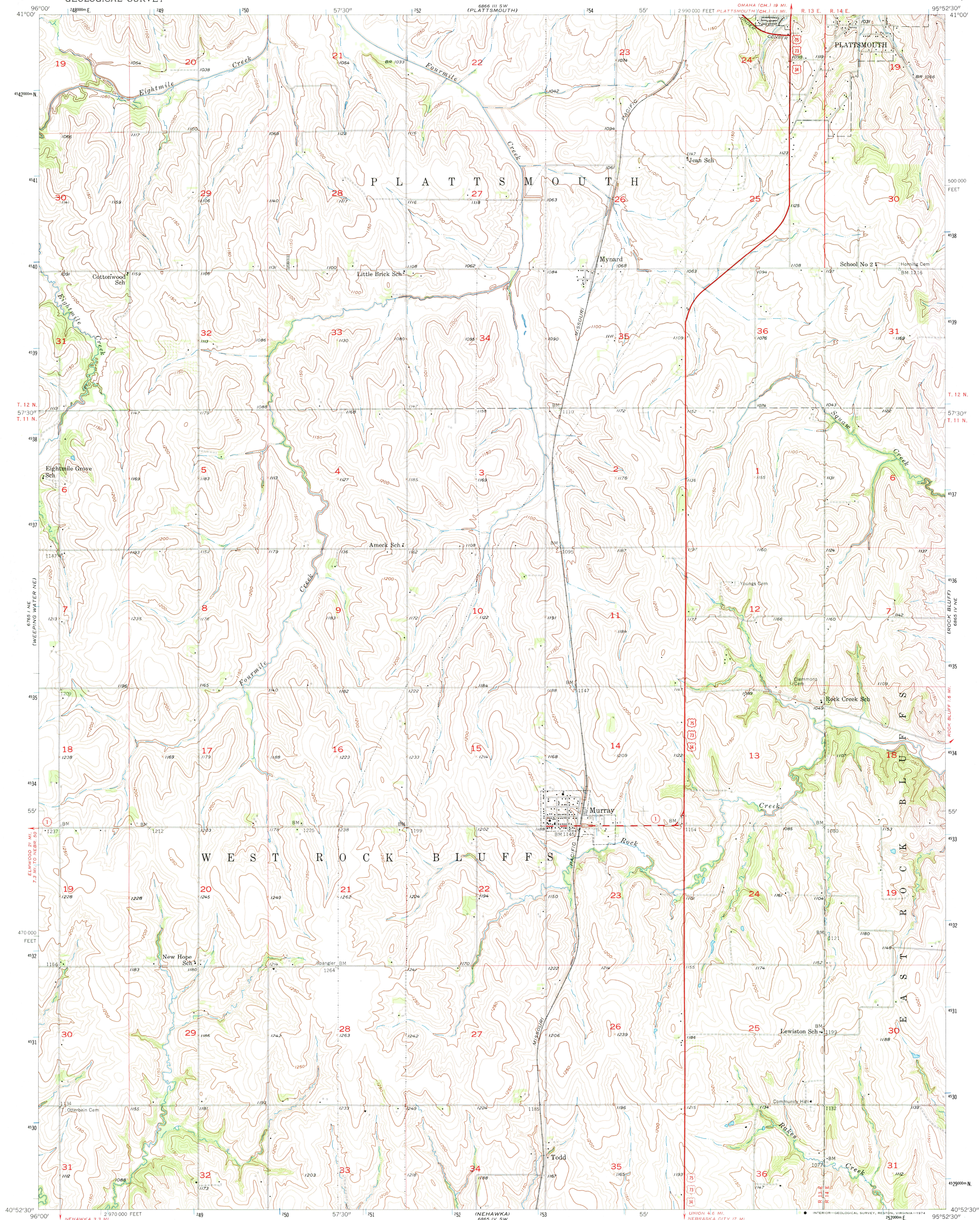


6865 III SE
(CEDAR CREEK)

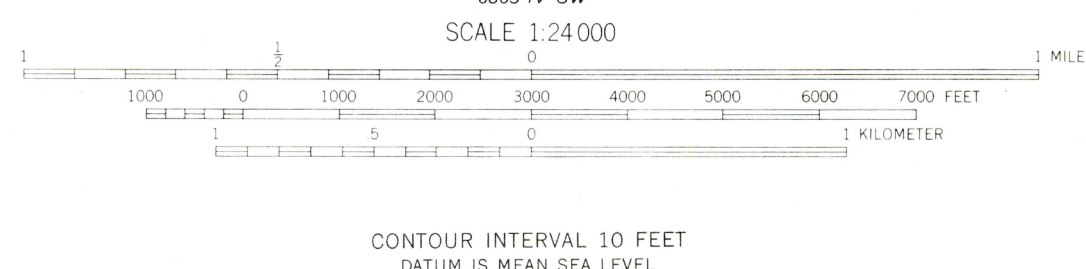
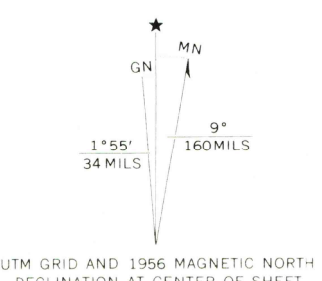
UNITED STATES
DEPARTMENT OF THE INTERIOR
GEOLOGICAL SURVEY

MURRAY QUADRANGLE
NEBRASKA—CASS CO.
7.5 MINUTE SERIES (TOPOGRAPHIC)

6865 III SE
(PACIFIC JUNCTION)



Mapped, edited, and published by the Geological Survey
Control by USGS and USCGS
Topography from aerial photographs by Kelsh plotter
Aerial photographs taken 1955. Field check 1956
Polyconic projection. 1927 North American datum
10,000-foot grid based on Nebraska coordinate system, south zone
1000-meter Universal Transverse Mercator grid ticks,
zone 15, shown in blue



ROAD CLASSIFICATION
Heavy duty ——— Light duty ———
Medium duty ——— Unimproved dirt ———
U. S. Route ——— State Route ———

MURRAY, NEBR.

N 4052.5—W 9552.5/7.5

1956

AMS 6865 IV NW—SERIES V875

THIS MAP COMPLIES WITH NATIONAL MAP ACCURACY STANDARDS
FOR SALE BY U. S. GEOLOGICAL SURVEY, DENVER, COLORADO 80225 OR RESTON, VIRGINIA 22092
A FOLDER DESCRIBING TOPOGRAPHIC MAPS AND SYMBOLS IS AVAILABLE ON REQUEST

JAN 31 1974

2225