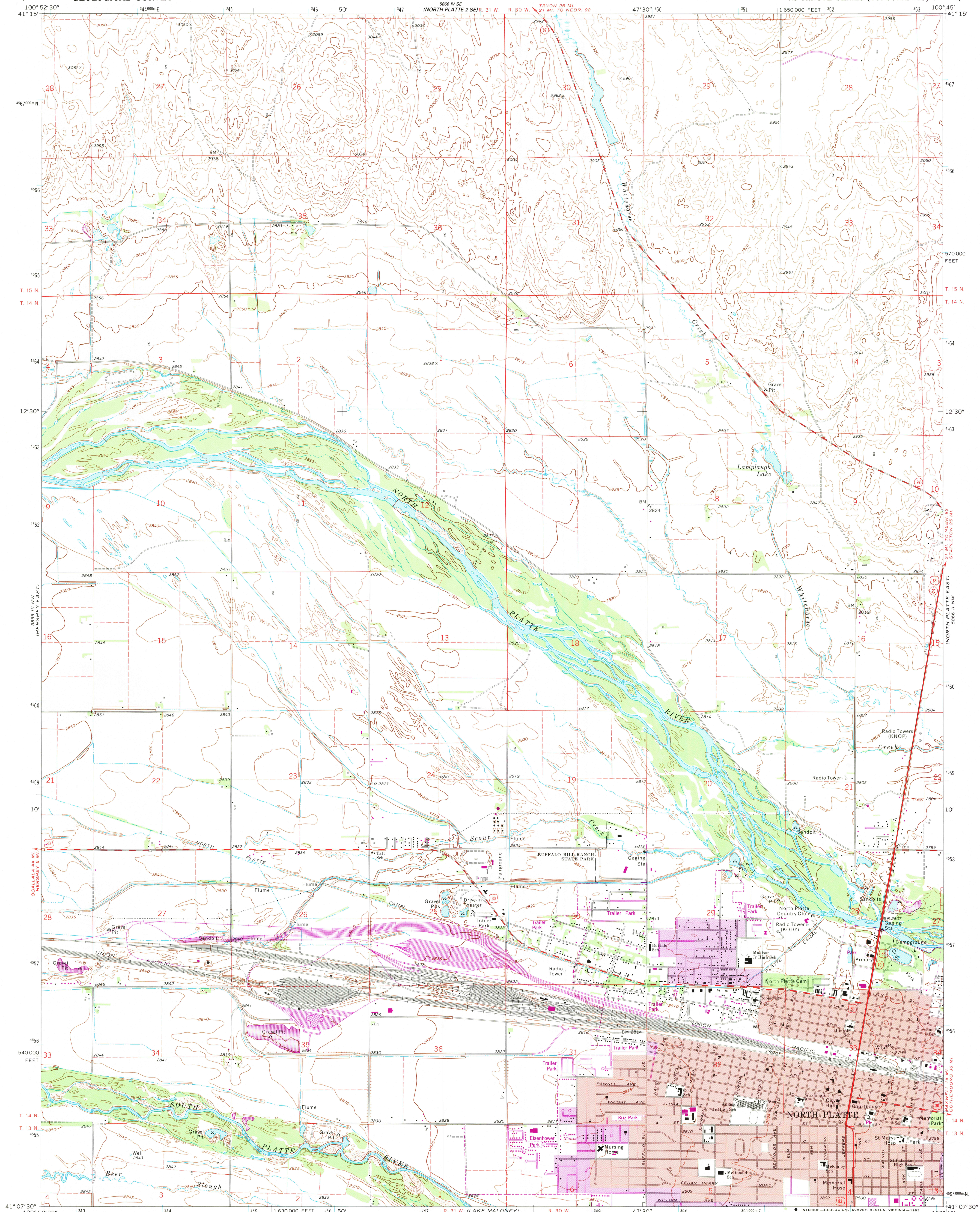


UNITED STATES
DEPARTMENT OF THE INTERIOR
GEOLOGICAL SURVEY

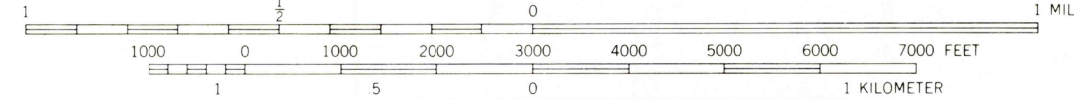
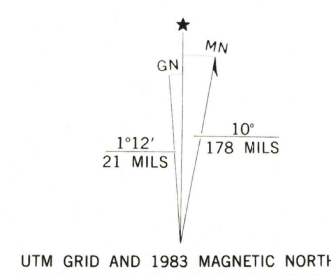
NORTH PLATTE WEST QUADRANGLE
NEBRASKA—LINCOLN CO.
7.5 MINUTE SERIES (TOPOGRAPHIC)



Mapped, edited, and published by the Geological Survey as part of the Department of the Interior program for the development of the Missouri River Basin Control by USGS and USC&GS

Topography by photogrammetric methods from aerial photographs taken 1969. Field checked 1970.
Polyconic projection. 1927 North American datum. 10,000-foot grid based on Nebraska coordinate system, south zone 1000-meter Universal Transverse Mercator grid ticks, zone 14, shown in blue

Red tint indicates areas in which only landmark buildings are shown
To place on the predicted North American Datum 1983 move the projection lines 5 meters north and 36 meters east as shown by dashed corner ticks
There may be private inholdings within the boundaries of the National or State reservations shown on this map



CONTOUR INTERVAL 5 AND 20 FEET
NATIONAL GEODETIC VERTICAL DATUM OF 1929

THIS MAP COMPLIES WITH NATIONAL MAP ACCURACY STANDARDS
FOR SALE BY U.S. GEOLOGICAL SURVEY, DENVER, COLORADO 80225
OR RESTON, VIRGINIA 22092
A FOLDER DESCRIBING TOPOGRAPHIC MAPS AND SYMBOLS IS AVAILABLE ON REQUEST

CONTOUR INTERVAL QUADRANGLE LOCATION

ROAD CLASSIFICATION
Primary highway, hard surface
Secondary highway, hard surface
Light-duty road, hard or improved surface
Unimproved road
Interstate Route
U.S. Route
State Route

NORTH PLATTE WEST, NEBR.
N4107.5—W10045/7.5

1970
PHOTOREVISED 1983
DMA 5866 III NE—SERIES R875

Revisions shown in purple compiled from aerial photographs taken 1981 and other sources
This information not field checked. Map edited 1983
Purple tint indicates extension of urban area

RETURN TO:
USGS AND HISTORICAL MAP ARCHIVES