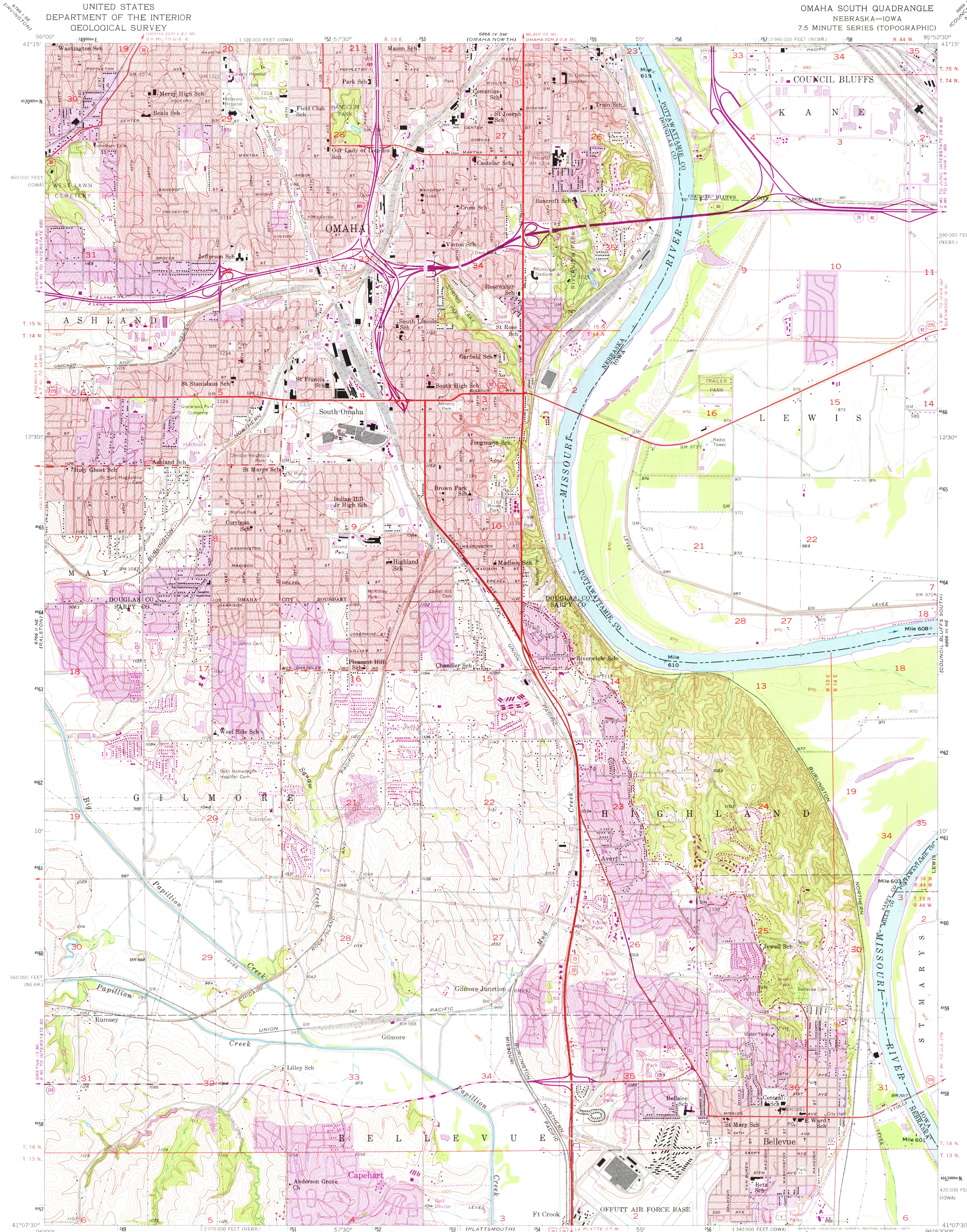


UNITED STATES
DEPARTMENT OF THE INTERIOR
GEOLOGICAL SURVEY

OMAHA SOUTH QUADRANGLE
NEBRASKA—IOWA
7.5 MINUTE SERIES (TOPOGRAPHIC)

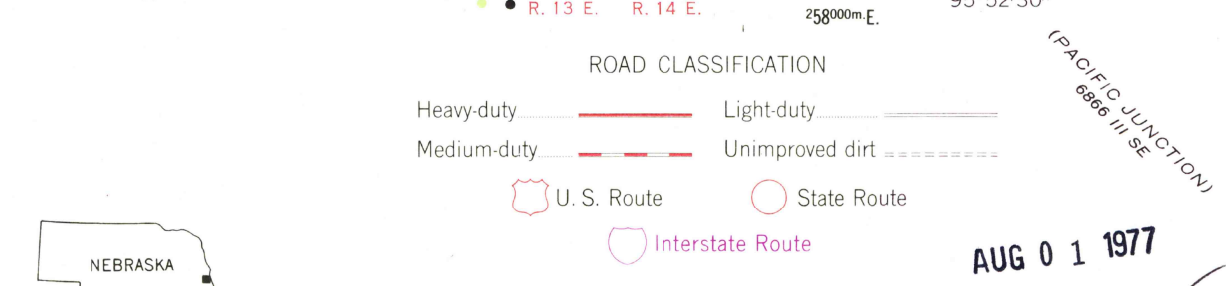
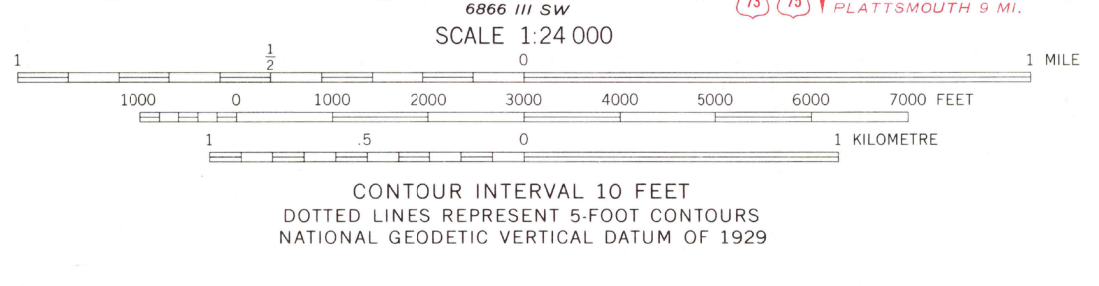
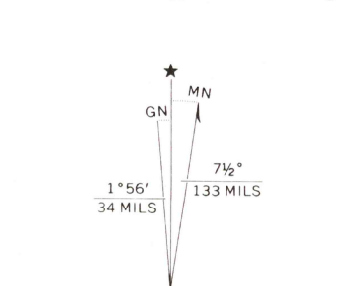
6866 1/2 SE
COUNCIL BLUFFS
NORTH



Mapped, edited, and published by the Geological Survey
Control by USGS and USC&GS

Topography from aerial photographs by photogrammetric methods
and by planetable surveys 1956. Aerial photographs taken 1952
Polyconic projection. 1927 North American datum
10,000-foot grids based on Nebraska coordinate system,
south zone, and Iowa coordinate system, south zone
1000-metre Universal Transverse Mercator grid ticks,
zone 15, shown in blue

Red tint indicates areas in which only landmark buildings are shown
Revisions shown in purple compiled from aerial photographs
taken 1969 and 1975. This information not field checked
Purple tint indicates extension of urban areas



OMAHA SOUTH, NEBR.—IOWA
N 4107.5—W 9552.5/7.5

USGS
Historical File
Topographic Division
1956
PHOTOREVISED 1969 AND 1975
AMS 6866 III NW—SERIES V875

AUG 0 1 1977