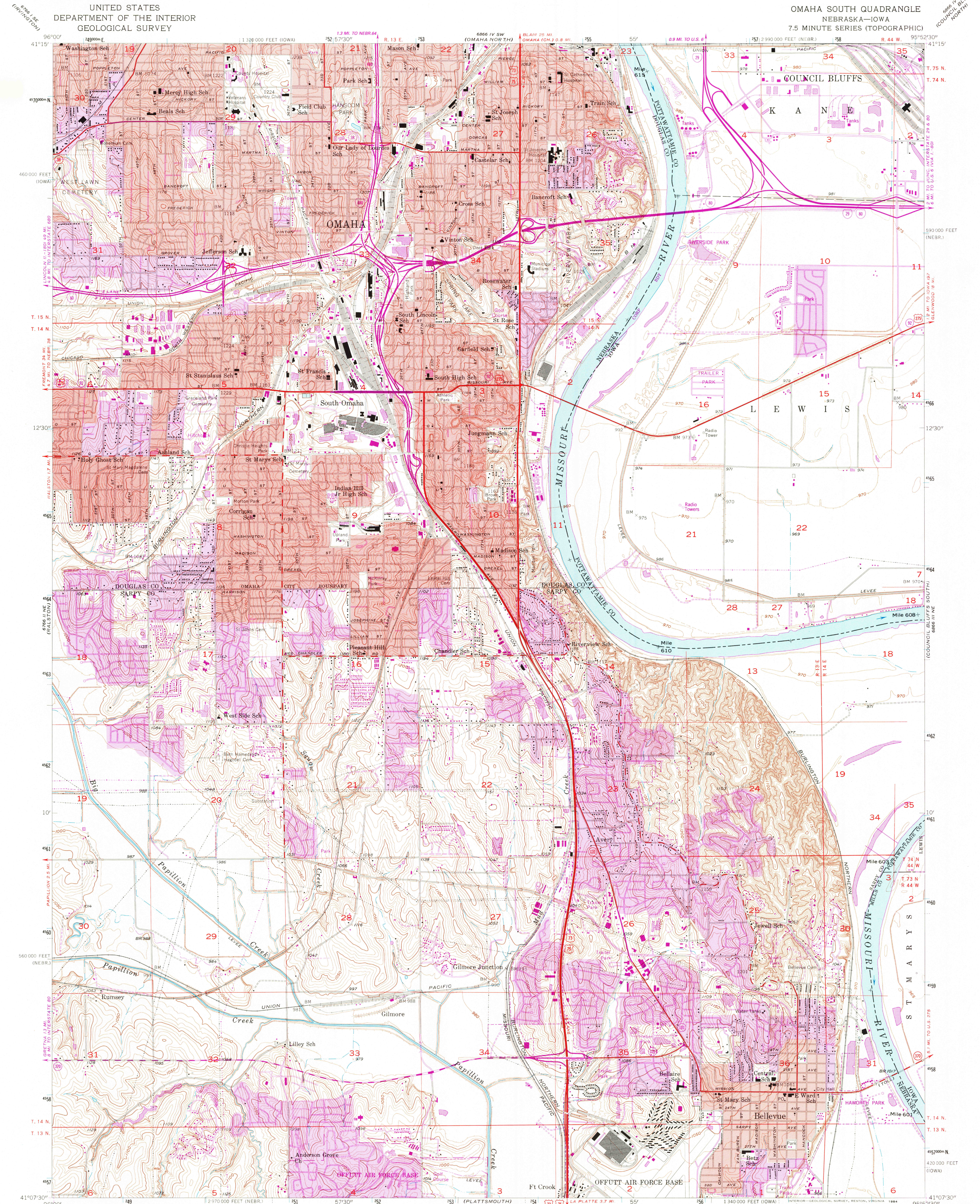


UNITED STATES
DEPARTMENT OF THE INTERIOR
GEOLOGICAL SURVEY

OMAHA SOUTH QUADRANGLE
NEBRASKA—IOWA
7.5 MINUTE SERIES (TOPOGRAPHIC)



Mapped, edited, and published by the Geological Survey
Control by USGS and USC&GS

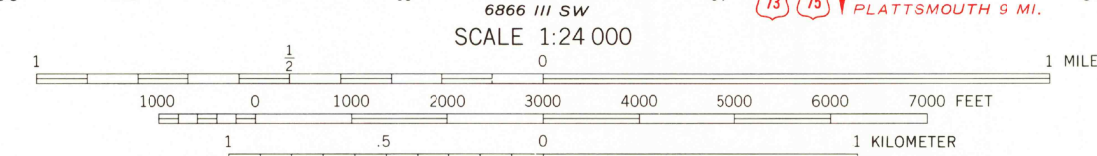
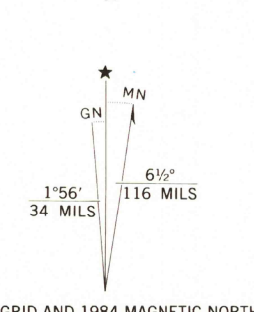
Topography from aerial photographs by photogrammetric methods
and by planetable surveys 1956. Aerial photographs taken 1952

Polyconic projection. 1927 North American datum
10,000-foot grids based on Nebraska coordinate system,
south zone, and Iowa coordinate system, south zone
1000-meter Universal Transverse Mercator grid ticks,
zone 15, shown in blue

Red tint indicates areas in which only landmark buildings are shown

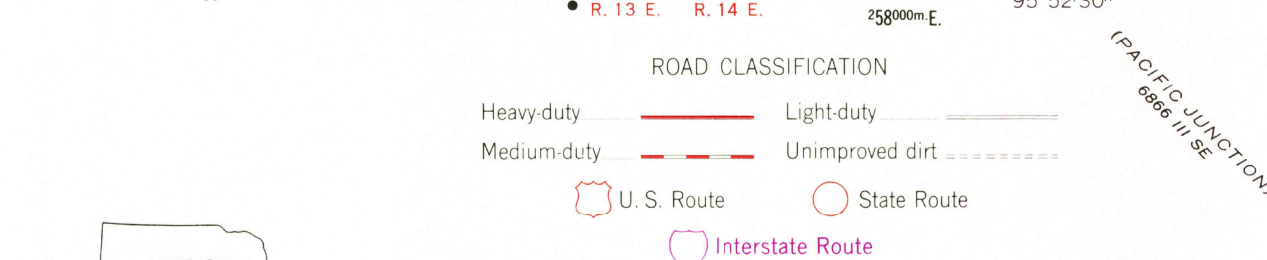
To place on the predicted North American Datum 1983,
move the projection lines 4 meters north and
24 meters east as shown by dashed corner ticks

There may be private inholdings within the boundaries of
the National or State reservations shown on this map



CONTOUR INTERVAL 10 FEET
DOTTED LINES REPRESENT 5-FOOT CONTOURS
NATIONAL GEODETIC VERTICAL DATUM OF 1929

THIS MAP COMPLIES WITH NATIONAL MAP ACCURACY STANDARDS
FOR SALE BY U. S. GEOLOGICAL SURVEY, DENVER, COLORADO 80225, OR RESTON, VIRGINIA 22092
AND IOWA GEOLOGICAL SURVEY, IOWA CITY, IOWA 52240
A FOLDER DESCRIBING TOPOGRAPHIC MAPS AND SYMBOLS IS AVAILABLE ON REQUEST



OMAHA SOUTH, NEBR.—IOWA
N 4107.5—W 9552.5/7.5

1956
PHOTOGRAPHED 1984
DMA 6666 III NW—SERIES V875

Revisions shown in purple compiled from aerial
photographs taken 1982 and other sources
This information not field checked. Map edited 1984
Purple tint indicates extension of urban area

RETURN TO:
USGS NHD HISTORICAL MAP ARCHIVES