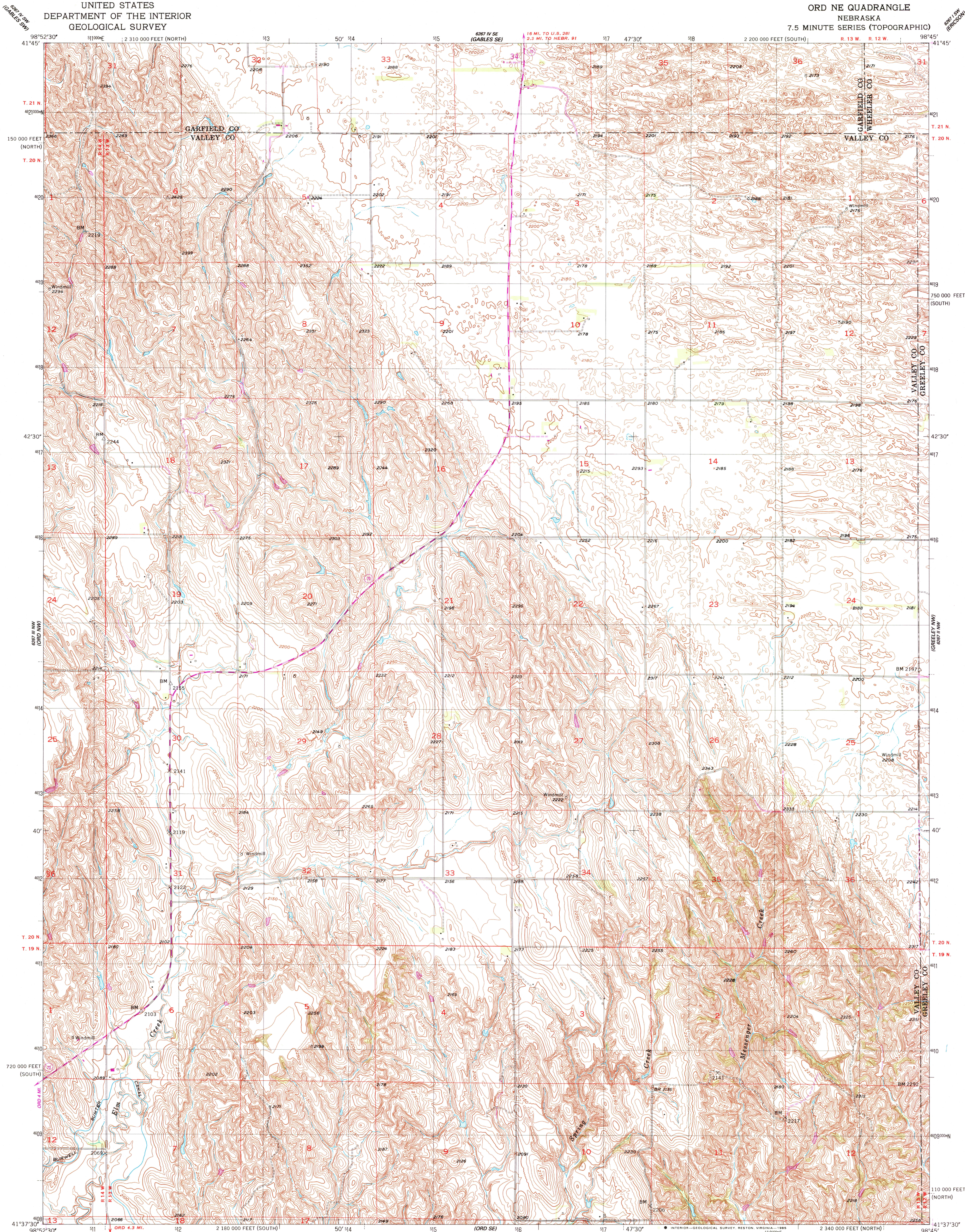
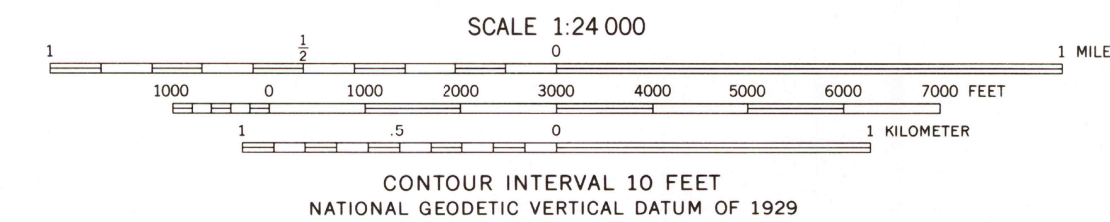
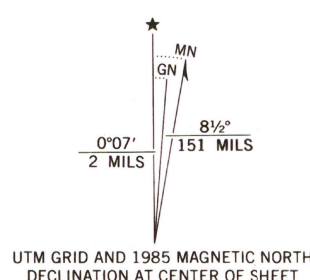


UNITED STATES  
DEPARTMENT OF THE INTERIOR  
GEOLOGICAL SURVEY

ORD NE QUADRANGLE  
NEBRASKA  
7.5 MINUTE SERIES (TOPOGRAPHIC)



Mapped, edited, and published by the Geological Survey  
as part of the Department of the Interior program  
for the development of the Missouri River Basin  
Control by USGS and USC&GS  
Topography from aerial photographs by photogrammetric methods  
Aerial photographs taken 1951. Field check 1954  
Polyconic projection. 1927 North American datum  
10,000-foot grid based on Nebraska coordinate system,  
north and south zones  
1000-meter Universal Transverse Mercator grid, zone 14  
To place on the predicted North American Datum 1983,  
move the projection lines 5 meters north and  
31 meters east as shown by dashed corner ticks



ROAD CLASSIFICATION			
Heavy-duty	4 LANE 16 LANE	Light-duty	
Medium-duty	4 LANE 16 LANE	Unimproved dirt	
U. S. Route		State Route	

THIS MAP COMPLIES WITH NATIONAL MAP ACCURACY STANDARDS  
FOR SALE BY U. S. GEOLOGICAL SURVEY, DENVER, COLORADO 80225, OR RESTON, VIRGINIA 22092  
A FOLDER DESCRIBING TOPOGRAPHIC MAPS AND SYMBOLS IS AVAILABLE ON REQUEST

Revisions shown in purple and woodland compiled  
from aerial photographs taken 1981 and other sources  
This information not field checked. Map edited 1985

ORD NE, NEBR.  
41098-F7-TF-024  
1954  
PHOTOREVISED 1985  
DMA 6267 III NE-SERIES V875