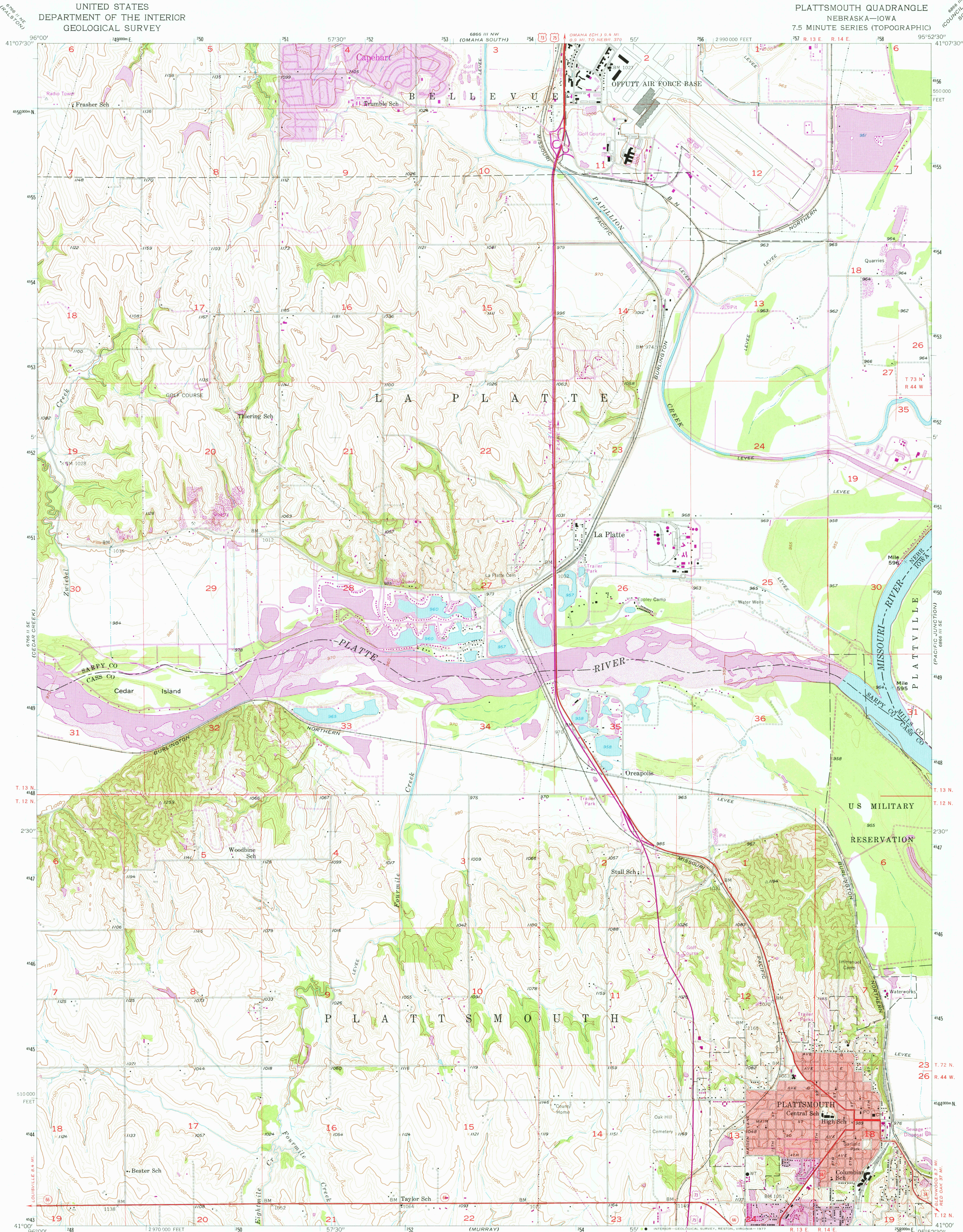


UNITED STATES
DEPARTMENT OF THE INTERIOR
GEOLOGICAL SURVEY

PLATTSMOUTH QUADRANGLE
NEBRASKA—IOWA
7.5 MINUTE SERIES (TOPOGRAPHIC)



Mapped, edited, and published by the Geological Survey

Control by USGS and USC&GS

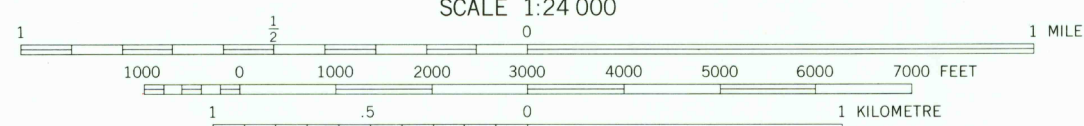
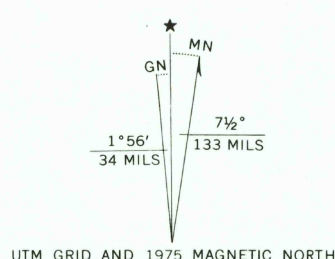
Topography from aerial photographs by Kelsh plotter and by planetable surveys 1956. Aerial photographs taken 1952

Polycyclic projection. 1927 North American datum 10,000-foot grid based on Nebraska coordinate system, south zone 1000-metre Universal Transverse Mercator grid ticks, zone 15, shown in blue

Red tint indicates area in which only landmark buildings are shown

Revisions shown in purple compiled from aerial photographs taken 1969 and 1975. This information not field checked

Purple tint indicates extension of urban areas



CONTOUR INTERVAL 10 FEET
DOTTED LINES REPRESENT 5-FOOT CONTOURS
NATIONAL GEODETIC VERTICAL DATUM OF 1929

THIS MAP COMPLIES WITH NATIONAL MAP ACCURACY STANDARDS
FOR SALE BY U. S. GEOLOGICAL SURVEY, DENVER, COLORADO 80225, OR RESTON, VIRGINIA 22092
AND BY THE IOWA GEOLOGICAL SURVEY, IOWA CITY, IOWA 52240
A FOLDER DESCRIBING TOPOGRAPHIC MAPS AND SYMBOLS IS AVAILABLE ON REQUEST



USGS PLATTSMOUTH, NEBR—IOWA
Historical File N4100—W9552.5/7.5
Topographic Division

1956
PHOTOREVISED 1969 AND 1975
AMS 6866 III SW—SERIES V875

MAY 23 1977
4,500