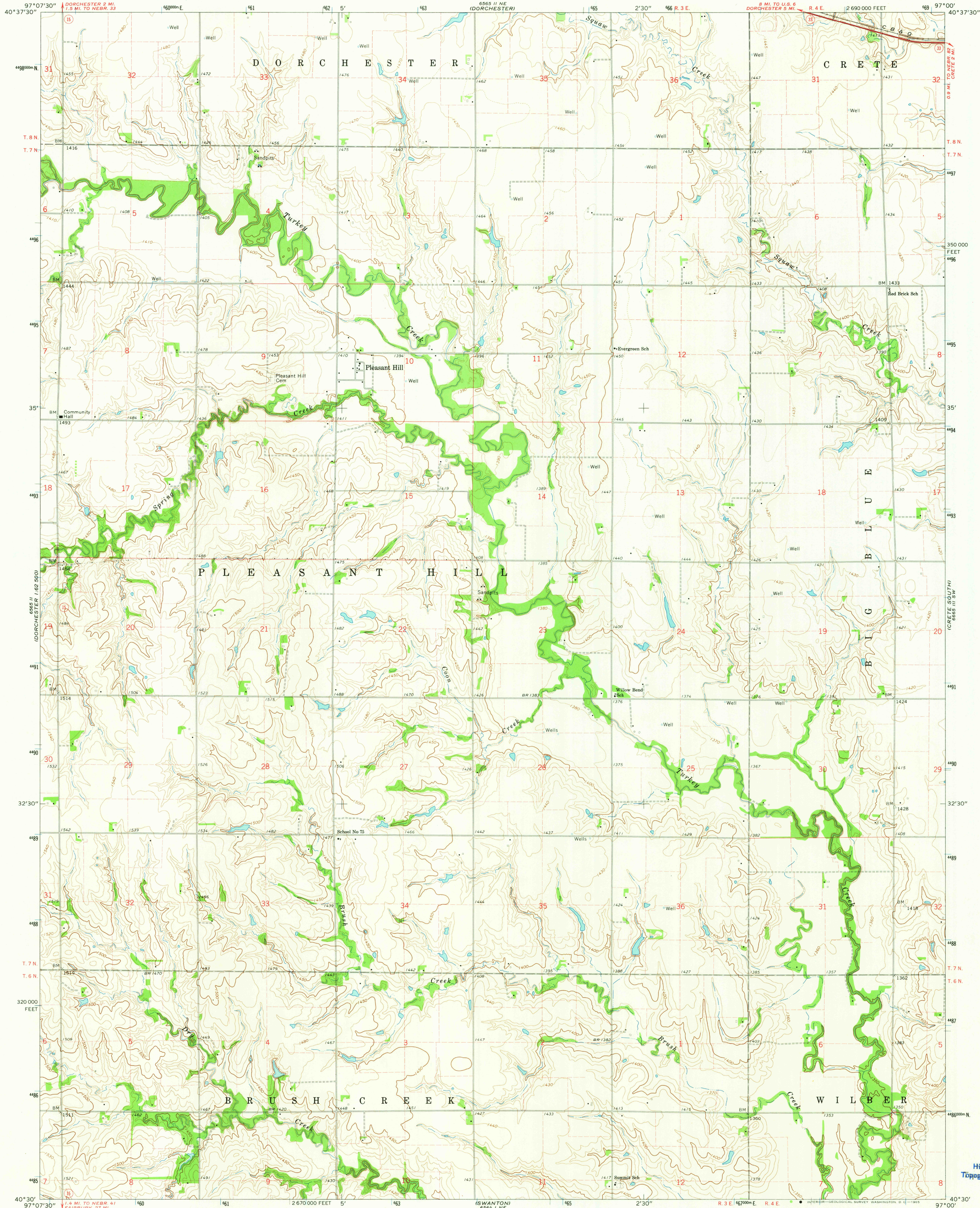


UNITED STATES
DEPARTMENT OF THE INTERIOR
GEOLOGICAL SURVEY

PLEASANT HILL QUADRANGLE
NEBRASKA—SALINE CO.
7.5 MINUTE SERIES (TOPOGRAPHIC)
SE/4 DORCHESTER 15' QUADRANGLE

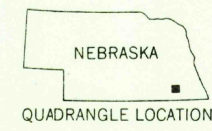


Mapped, edited, and published by the Geological Survey as part of the Department of the Interior program for the development of the Missouri River Basin Control by USGS and USC&GS
Topography by photogrammetric methods from aerial photographs taken 1962. Field checked 1964
Polyconic projection. 1927 North American datum 10,000-foot grid based on Nebraska coordinate system, south zone 1000-meter Universal Transverse Mercator grid ticks, zone 14, shown in blue
Fine red dashed lines indicate selected fence and field lines where generally visible on aerial photographs. This information is unchecked

UTM GRID AND 1964 MAGNETIC NORTH DECLINATION AT CENTER OF SHEET

SCALE 1:24,000
1 1000 2000 3000 4000 5000 6000 7000 FEET
1 5 10 15 20 KILOMETER
CONTOUR INTERVAL 10 FEET
DOTTED LINES REPRESENT 5-FOOT CONTOURS
DATUM IS MEAN SEA LEVEL
THIS MAP COMPLIES WITH NATIONAL MAP ACCURACY STANDARDS
FOR SALE BY U. S. GEOLOGICAL SURVEY, DENVER, COLORADO 80225, OR WASHINGTON, D. C. 20242
A FOLDER DESCRIBING TOPOGRAPHIC MAPS AND SYMBOLS IS AVAILABLE ON REQUEST

ROAD CLASSIFICATION
Heavy-duty ——— Light-duty ———
Unimproved dirt ———
State Route —○—



PLEASANT HILL, NEBR.
SE/4 DORCHESTER 15' QUADRANGLE
N4030—W9700/7.5

1964
AMS 6565 II SE—SERIES V875

USGS
Historical File
Topographic Division

DEC 7 1965
U.S.G.S.
FILE COPY
TOPOGRAPHIC DIVISION