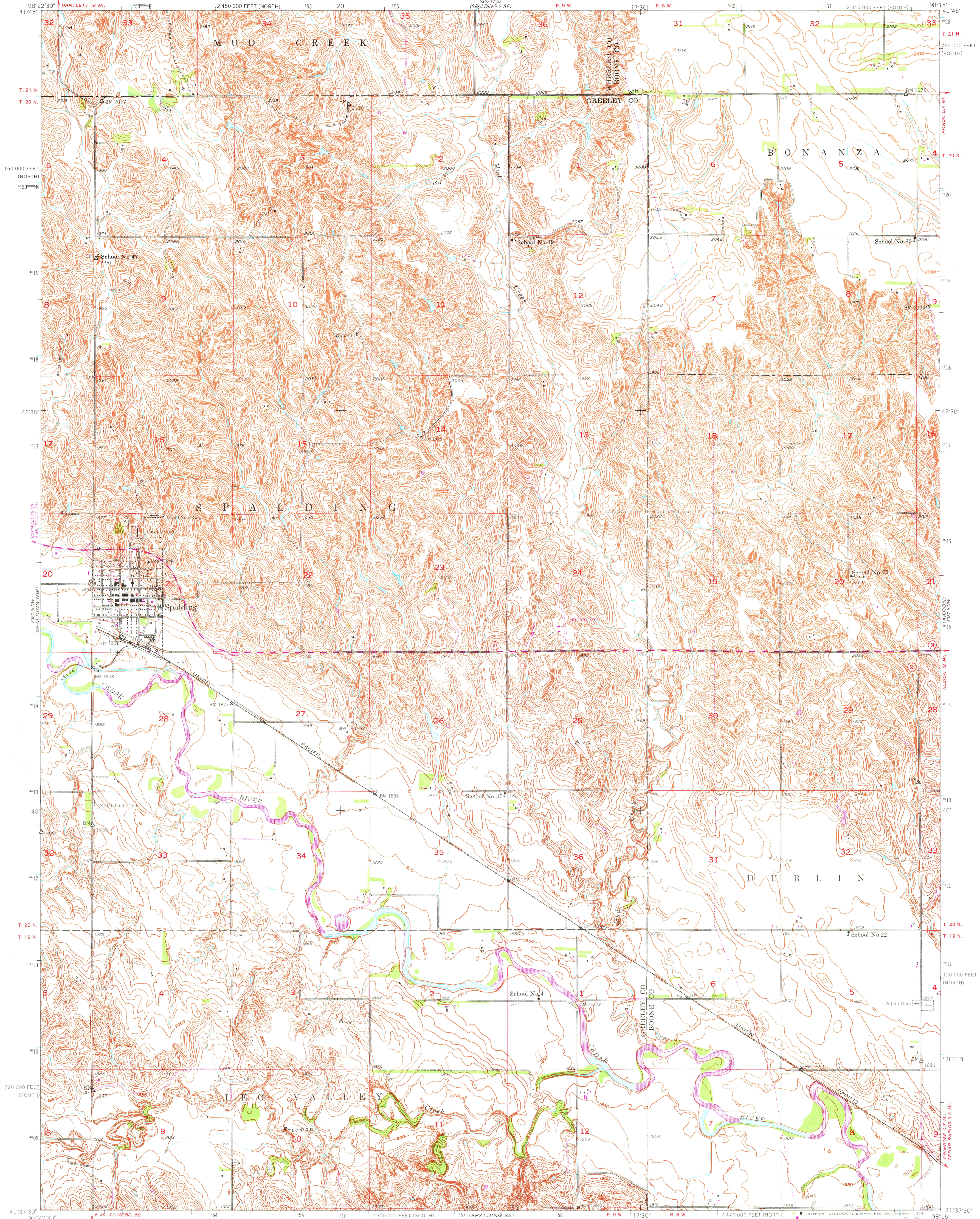


UNITED STATES
DEPARTMENT OF THE INTERIOR
GEOLOGICAL SURVEY

SPALDING QUADRANGLE
NEBRASKA
7.5 MINUTE SERIES (TOPOGRAPHIC)



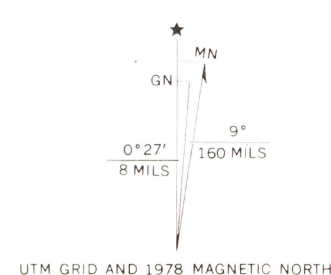
Mapped, edited, and published by the Geological Survey as part of the Department of the Interior program for the development of the Missouri River Basin Control by USGS, USC&GS, and U.S. Bureau of Reclamation

Topography from aerial photographs by photogrammetric methods Aerial photographs taken 1951. Field check 1954

Polyconic projection. 1927 North American datum 10,000 foot grids based on Nebraska coordinate system, north and south zones

1000-meter Universal Transverse Mercator grid ticks, Zone 14, shown in blue

Revisions shown in purple compiled from aerial photographs taken 1974. This information not field checked. Map edited 1978



SCALE 1:24,000
CONTOUR INTERVAL 10 FEET
NATIONAL GEODETIC VERTICAL DATUM OF 1929

THIS MAP COMPLIES WITH NATIONAL MAP ACCURACY STANDARDS
FOR SALE BY U.S. GEOLOGICAL SURVEY, DENVER, COLORADO 80225, OR RESTON, VIRGINIA 22092
A FOLDER DESCRIBING TOPOGRAPHIC MAPS AND SYMBOLS IS AVAILABLE ON REQUEST



ROAD CLASSIFICATION
Heavy-duty ——— Light-duty ———
Medium-duty ——— Unimproved dirt ———
U.S. Route ——— State Route ———

USGS
Historical File
Topographic Division

SPALDING, NEBR.
N4137.5-W9815.7.5
1954
PHOTOREVISED 1978
AMS 6367 III NE-SERIES V875

OCT 13 1978

2700 RETURN TO:
USGS AND HISTORICAL MAP ARCHIVES