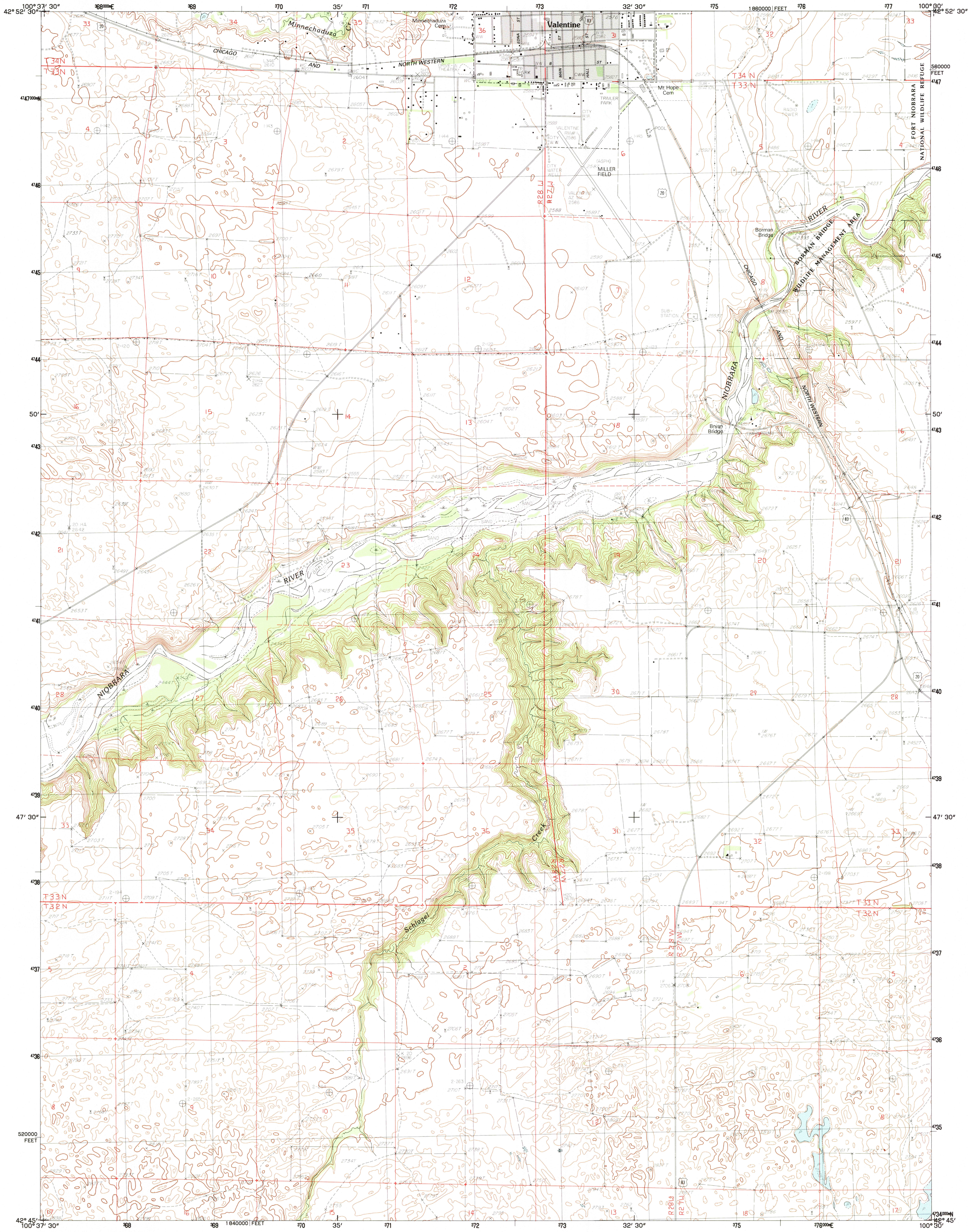


UNITED STATES
DEPARTMENT OF THE INTERIOR
GEOLOGICAL SURVEY

VALENTINE SOUTH QUADRANGLE
NEBRASKA-CHERRY CO.
7.5 MINUTE SERIES (TOPOGRAPHIC)



PRODUCED BY THE UNITED STATES GEOLOGICAL SURVEY
CONTROL BY USGS AND NOS/NOAA
COMPILED FROM AERIAL PHOTOGRAPHS TAKEN 1977
FIELD CHECKED 1980 MAP EDITED 1983
PROJECTION LAMBERT CONFORMAL CONIC
GRID: 1000-METER UNIVERSAL TRANSVERSE MERCATOR ZONE 14
100,000-FOOT STATE GRID TICS NEBRASKA, NORTH ZONE
UTM GRID DECLINATION 1984 WEST
1983 MAGNETIC NORTH DECLINATION 930' EAST
VERTICAL DATUM NATIONAL GEODETIC VERTICAL DATUM OF 1929
HORIZONTAL DATUM 1927 NORTH AMERICAN DATUM
To place on the predicted North American Datum of 1983,
move the projection lines as shown by dashed corner ticks
(6 meters north and 35 meters east)
There may be private inholdings within the boundaries of any
Federal and State reservations shown on this map
Gray tint indicates area in which selected buildings are shown

PROVISIONAL MAP
Produced from original
manuscript drawings. Infor-
mation shown as of date of
field check.

SCALE 1:24 000
CONTOUR INTERVAL 20 FEET
SUPPLEMENTARY CONTOUR INTERVAL 10 FEET
To convert feet to meters multiply by 3.048
To convert meters to feet multiply by 3.2808
THIS MAP COMPLIES WITH NATIONAL MAP ACCURACY STANDARDS
FOR SALE BY U. S. GEOLOGICAL SURVEY, DENVER, COLORADO 80225, OR RESTON, VIRGINIA 22092

1	2	3	1 Crookston East
4	5	2 Valentine North	3 Cornell Dam
6	7	4 Valentine SW	5 Thatcher
		6 Hudson Lake	7 Eli Lake
		8 Arabia NW	

ROAD LEGEND
Improved Road
Unimproved Road
Trail
Interstate Route U. S. Route State Route
VALENTINE SOUTH, NEBRASKA
PROVISIONAL EDITION 1983
42100-G5-TF-024

RETURN TO:
USGS AND HISTORICAL MAP ARCHIVES