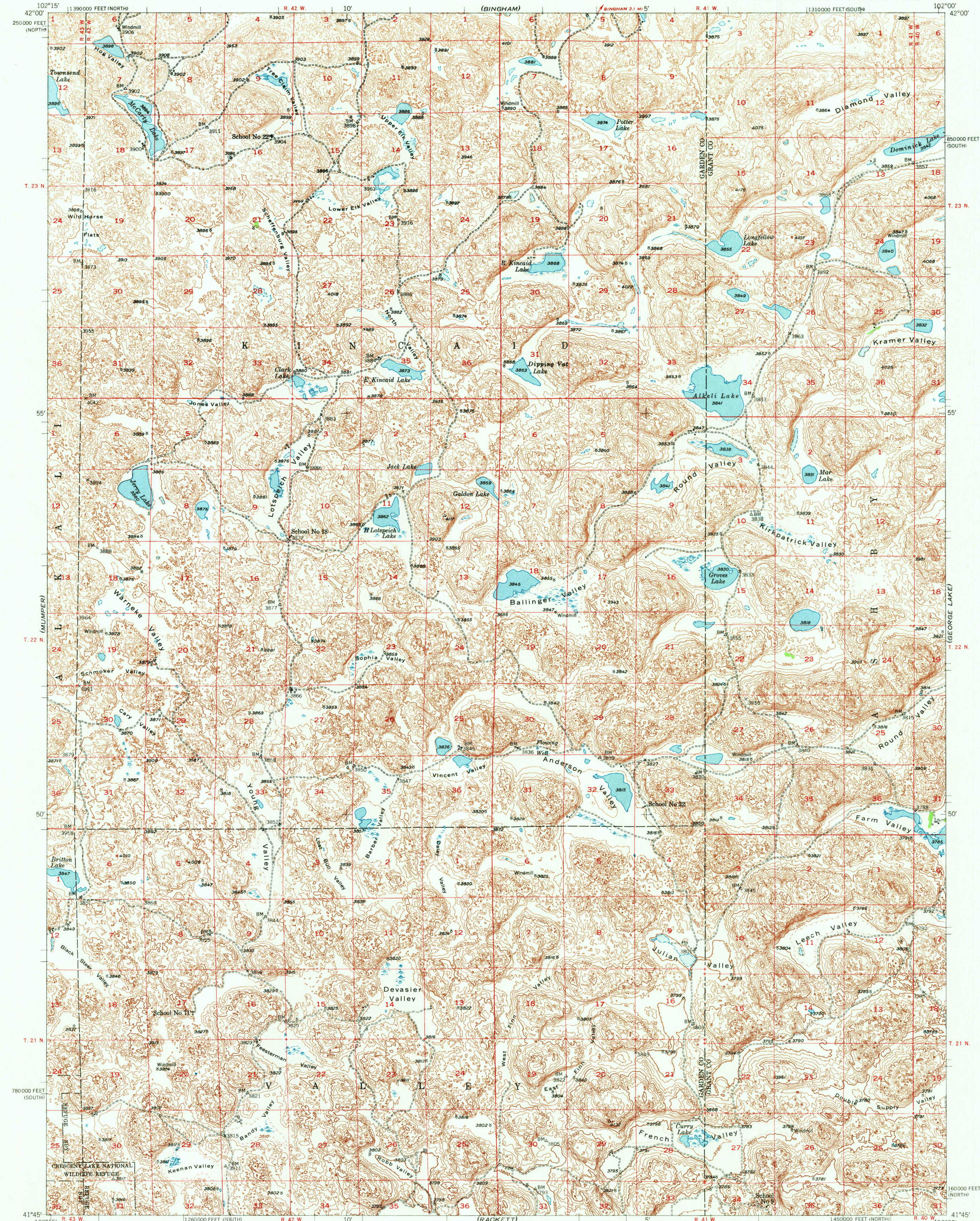
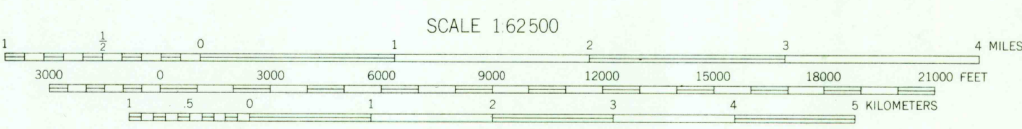


UNITED STATES
DEPARTMENT OF THE INTERIOR
GEOLOGICAL SURVEY

LONGFELLOW LAKE QUADRANGLE
NEBRASKA
15 MINUTE SERIES (TOPOGRAPHIC)



Maped, edited and published by the Geological Survey
as part of the Department of the Interior program
for the development of the Missouri River Basin
Control by USGS and USC&GS
Topography from aerial photographs by multiplex methods
Aerial photographs taken 1946. Field check 1948
Polyconic projection. 1927 North American datum
10,000-foot grids based on Nebraska coordinate system,
north and south zones



ROAD CLASSIFICATION
HARD-SURFACE ALL WEATHER ROADS DRY WEATHER ROADS
Heavy-duty ———— LAWF 16 LANE Improved dirt ————
Medium-duty ———— LAWF 16 LANE Unimproved dirt ————
Loose-surface, graded, or narrow hard-surface ————
U. S. Route ———— State Route ————

LONGFELLOW LAKE, NEBR.
N4145-W10200/15

EDITION OF 1950

THIS MAP COMPLIES WITH NATIONAL MAP ACCURACY STANDARDS
FOR SALE BY U. S. GEOLOGICAL SURVEY, DENVER, COLORADO OR WASHINGTON 25, D. C.

USGS
HISTORICAL FILE
TOPOGRAPHIC DIVISION

MAR 5

1170