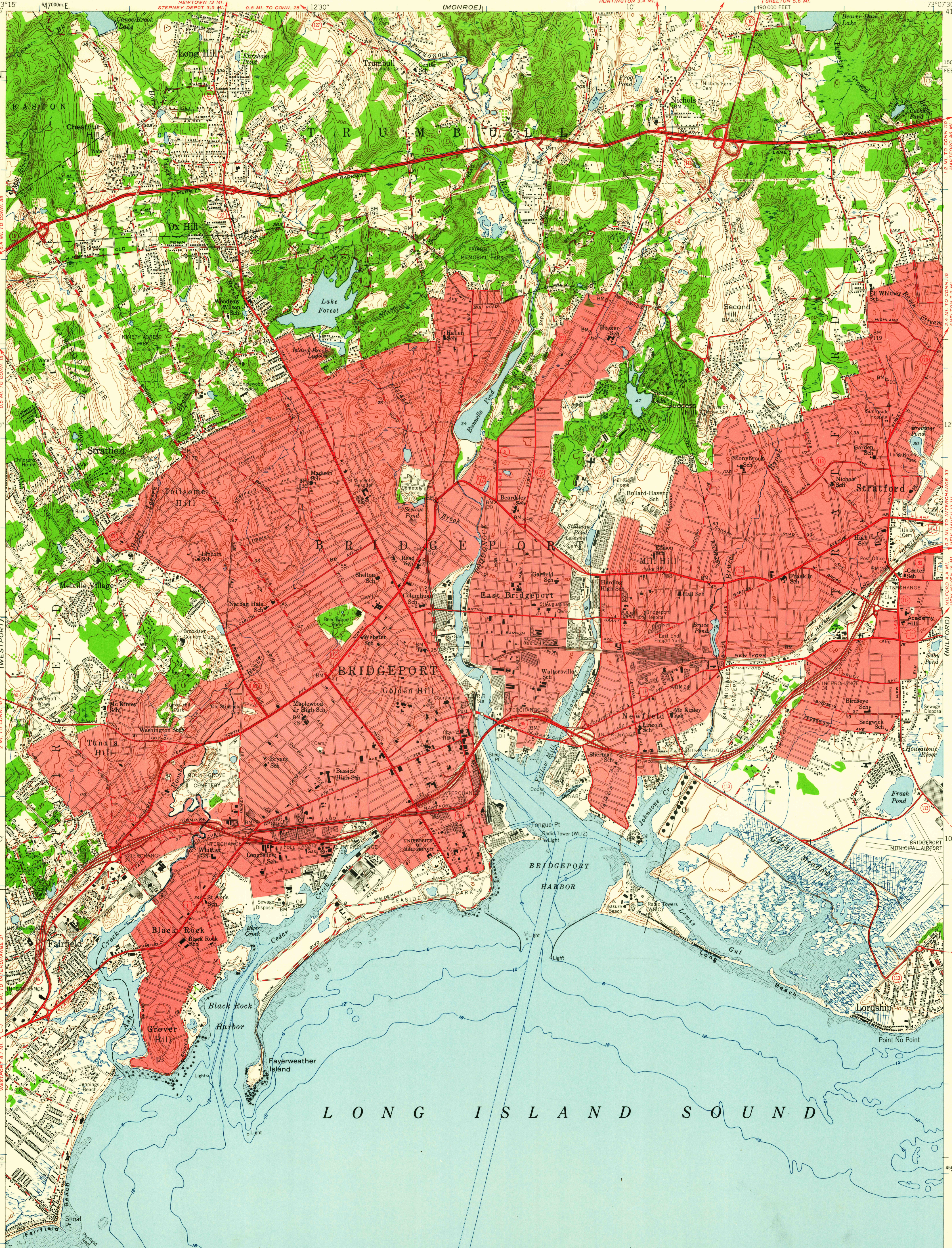


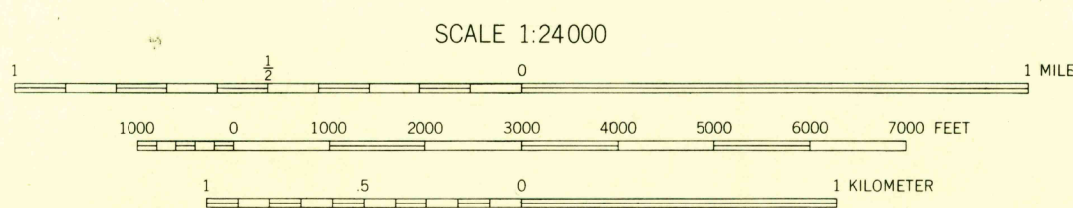
UNITED STATES
DEPARTMENT OF THE INTERIOR
GEOLOGICAL SURVEY

STATE OF CONNECTICUT
HIGHWAY DEPARTMENT

BRIDGEPORT QUADRANGLE
CONNECTICUT-FAIRFIELD CO.
7.5 MINUTE SERIES (TOPOGRAPHIC)



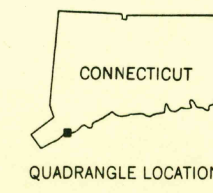
Mapped, edited, and published by the Geological Survey
Control by USC&GS, USGS, USCE, and Connecticut Geodetic Survey
Topography from aerial photographs by photogrammetric methods
Aerial photographs taken 1949. Field check 1951
Hydrography compiled from USC&GS chart 220 (1949)
Polyconic projection. 1927 North American datum
10,000-foot grid based on Connecticut coordinate system
1000-meter Universal Transverse Mercator grid ticks,
zone 18, shown in blue
Red tint indicates areas in which only
landmark buildings are shown
Connecticut Turnpike added 1959



CONTOUR INTERVAL 10 FEET
DATUM IS MEAN SEA LEVEL
DEPTH CURVES IN FEET—DATUM IS MEAN LOW WATER
SHORELINE SHOWN REPRESENTS THE APPROXIMATE LINE OF MEAN HIGH WATER
THE MEAN RANGE OF TIDE IS 7 FEET

THIS MAP COMPLIES WITH NATIONAL MAP ACCURACY STANDARDS
FOR SALE BY U. S. GEOLOGICAL SURVEY, WASHINGTON 25, D. C.
A FOLDER DESCRIBING TOPOGRAPHIC MAPS AND SYMBOLS IS AVAILABLE ON REQUEST

ROAD CLASSIFICATION
Heavy-duty ——— Light-duty ———
Medium-duty ——— Unimproved dirt ———
Interstate Route ——— U. S. Route ——— State Route ———



USGS
Historical File
Topographic Division

BRIDGEPORT, CONN.
NW 1/4 BRIDGEPORT 15' QUADRANGLE
N4107.5—W7307.5/7.5

1951

U.S.G.S.
FILE COPY

2480