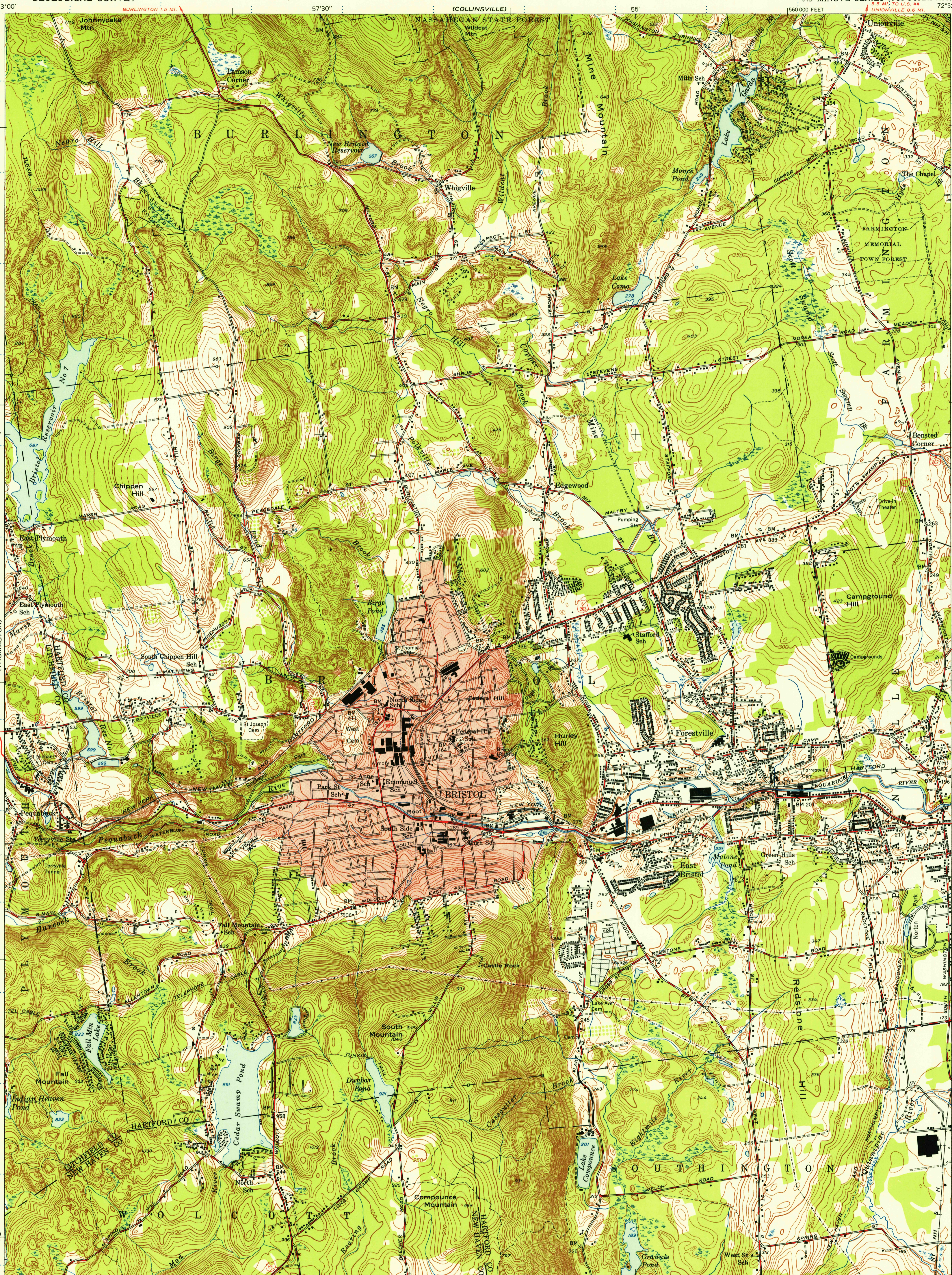


UNITED STATES  
DEPARTMENT OF THE INTERIOR  
GEOLOGICAL SURVEY

670000m.E.

675 BRISTOL QUADRANGLE  
CONNECTICUT  
7.5 MINUTE SERIES (TOPOGRAPHIC)  
1:50,000 FEET  
3.5 MI. TO U.S. 44  
UNIONVILLE 6.6 MI.

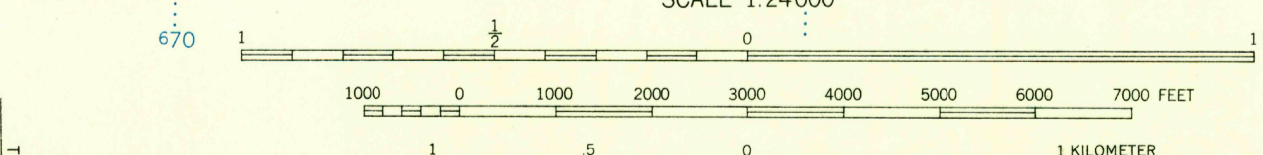
41°45'



U.S.G.S.  
FILE COPY  
TOPOGRAPHIC DIVISION

Mapped, edited, and published by the Geological Survey  
Control by USGS, USC&GS, and Connecticut Geodetic Survey  
Topography by plane-table surveys 1943. Revised 1953  
Polyconic projection. 1927 North American datum  
10,000-foot grid based on Connecticut coordinate system  
Red tint indicates area in which only  
landmark buildings are shown  
1,000-meter Universal Transverse Mercator grid, zone 18,  
indicated by blue dotted ticks outside the neatline

13°  
TRUE NORTH  
MAGNETIC NORTH  
APPROXIMATE MEAN  
DECLINATION, 1953



THIS MAP COMPLIES WITH NATIONAL MAP ACCURACY STANDARDS  
FOR SALE BY U. S. GEOLOGICAL SURVEY, WASHINGTON 25, D. C.  
A FOLDER DESCRIBING TOPOGRAPHIC MAPS AND SYMBOLS IS AVAILABLE ON REQUEST

USGS  
Historical Files  
Topographic Division



675000m.E.  
Heavy-duty 4 LANE 16 LANE  
Medium-duty 4 LANE 16 LANE  
U. S. Route  
State Route

U.S.G.S.  
FILE COPY  
TOPOGRAPHIC DIVISION

BRISTOL, CONN.  
N4137.5-W7252.5/7.5  
1953

OCT 29 1956

4335