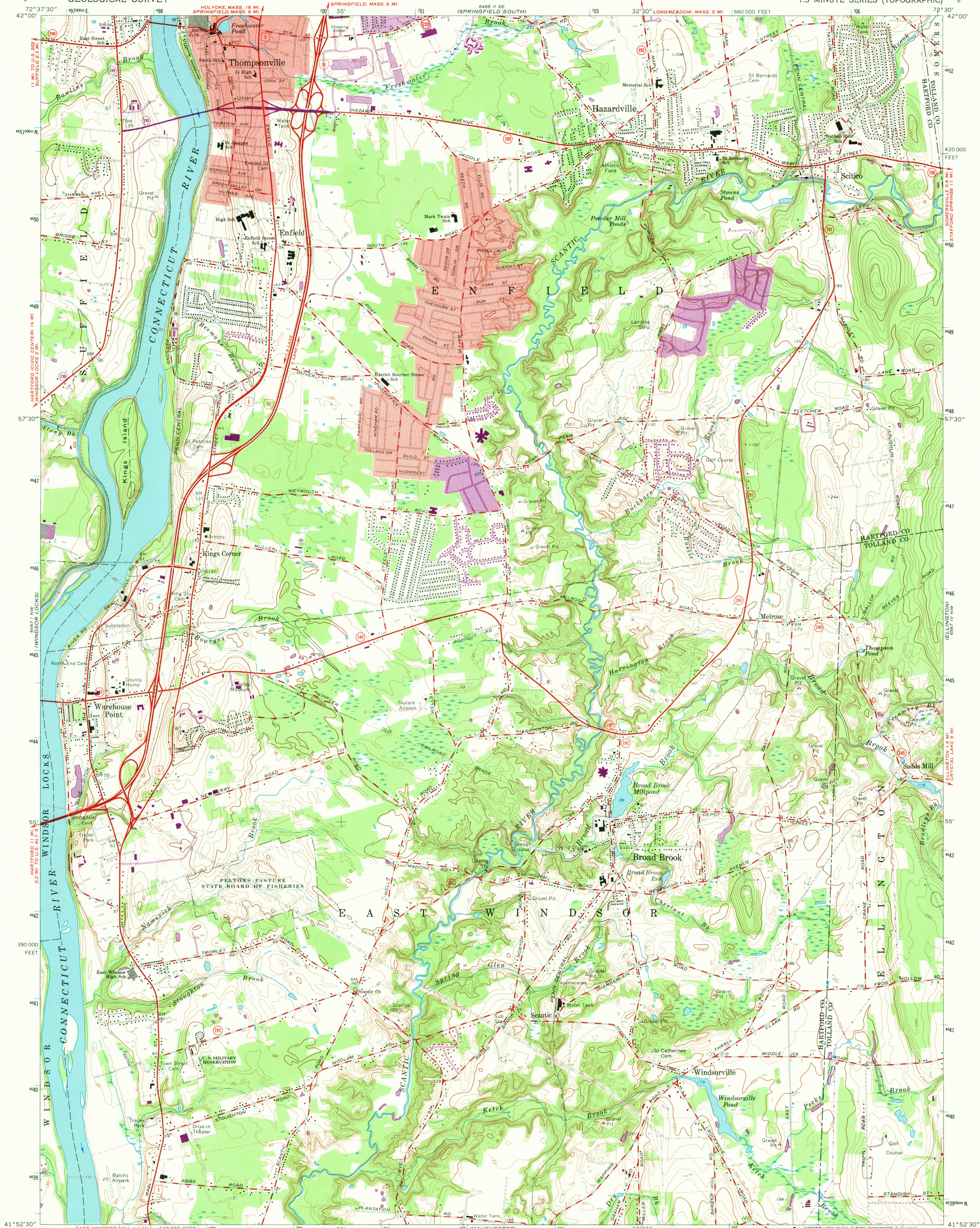


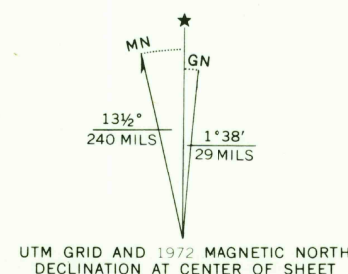
UNITED STATES  
DEPARTMENT OF THE INTERIOR  
GEOLOGICAL SURVEY

BROAD BROOK QUADRANGLE  
CONNECTICUT  
7.5 MINUTE SERIES (TOPOGRAPHIC)



Maped, edited, and published by the Geological Survey  
Revised in cooperation with Connecticut Highway Department  
Control by USGS, USC&GS, and Connecticut Geodetic Survey  
Planimetry by photogrammetric methods from aerial photographs  
taken 1941. Topography by planetable surveys 1942 and 1943  
Revised 1964

Polyconic projection. 1927 North American datum.  
10,000-foot grid based on Connecticut coordinate system  
1000-meter Universal Transverse Mercator grid ticks,  
zone 18, shown in blue  
Fine red dashed lines indicate selected fence and field lines where  
generally visible on aerial photographs. This information is unchecked  
Red tint indicates areas in which only landmark buildings are shown



SCALE 1:24,000  
CONTOUR INTERVAL 10 FEET  
DATUM IS MEAN SEA LEVEL



ROAD CLASSIFICATION  
Heavy-duty ——— Light-duty ———  
Medium-duty ——— Unimproved dirt ———  
Interstate Route U.S. Route State Route

BROAD BROOK, CONN.  
N4152.5-W7230/7.5

1964  
PHOTOREVISED 1972  
AMS 6467 1 NE-SERIES 1816

THIS MAP COMPLIES WITH NATIONAL MAP ACCURACY STANDARDS  
FOR SALE BY U.S. GEOLOGICAL SURVEY, WASHINGTON, D. C. 20242  
A FOLDER DESCRIBING TOPOGRAPHIC MAPS AND SYMBOLS IS AVAILABLE ON REQUEST

Revisions shown in purple compiled in cooperation with  
Connecticut Highway Department from aerial photographs  
taken 1972. This information not field checked  
Purple tint indicates extension of urban areas

4685