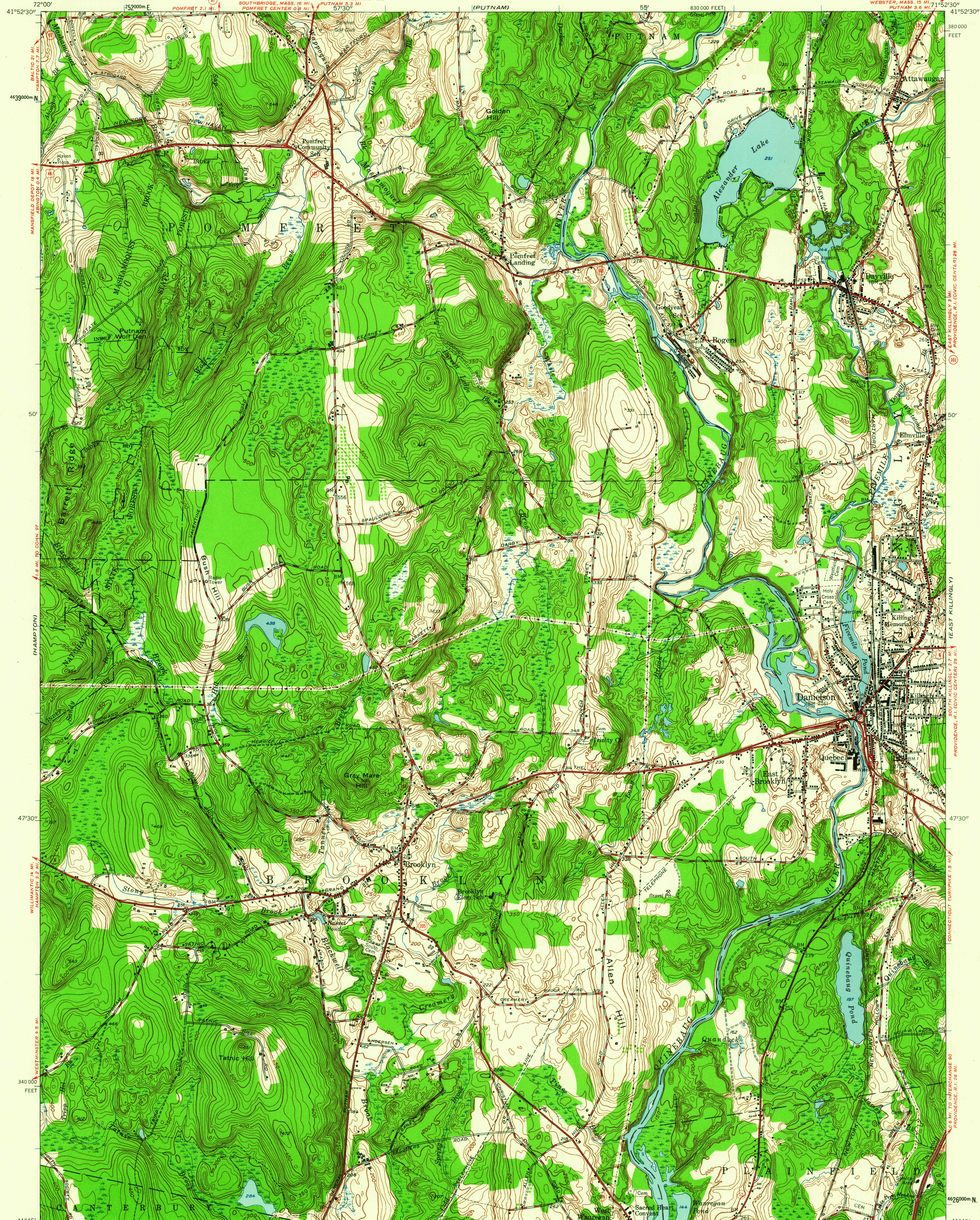
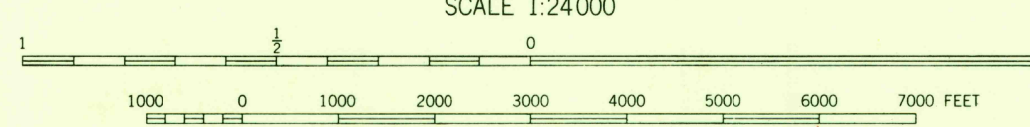


UNITED STATES
DEPARTMENT OF THE INTERIOR
GEOLOGICAL SURVEY

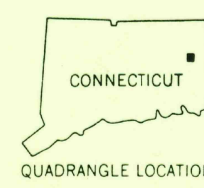
DANIELSON QUADRANGLE
CONNECTICUT—WINDHAM CO.
7.5 MINUTE SERIES (TOPOGRAPHIC)



Mapped, edited, and published by the Geological Survey
Control by USGS, USC&GS, and Connecticut Geodetic Survey
Topography by planetable surveys 1943. Revised 1955
Polyconic projection. 1927 North American datum
10,000-foot grid based on Connecticut coordinate system
1000-meter Universal Transverse Mercator grid ticks,
zone 19, shown in blue
Connecticut Turnpike added 1959



CONTOUR INTERVAL 10 FEET
DATUM IS MEAN SEA LEVEL



ROAD CLASSIFICATION
Heavy-duty ——— Light-duty ———
Medium-duty ——— Unimproved dirt ———
U. S. Route ——— State Route ———

DANIELSON, CONN.
N4145—W7152.5/7.5
1955

U.S.G.S.
FILE COPY
TOPOGRAPHIC DIVISION

MAY - 3 1960
MAY - 3 1960