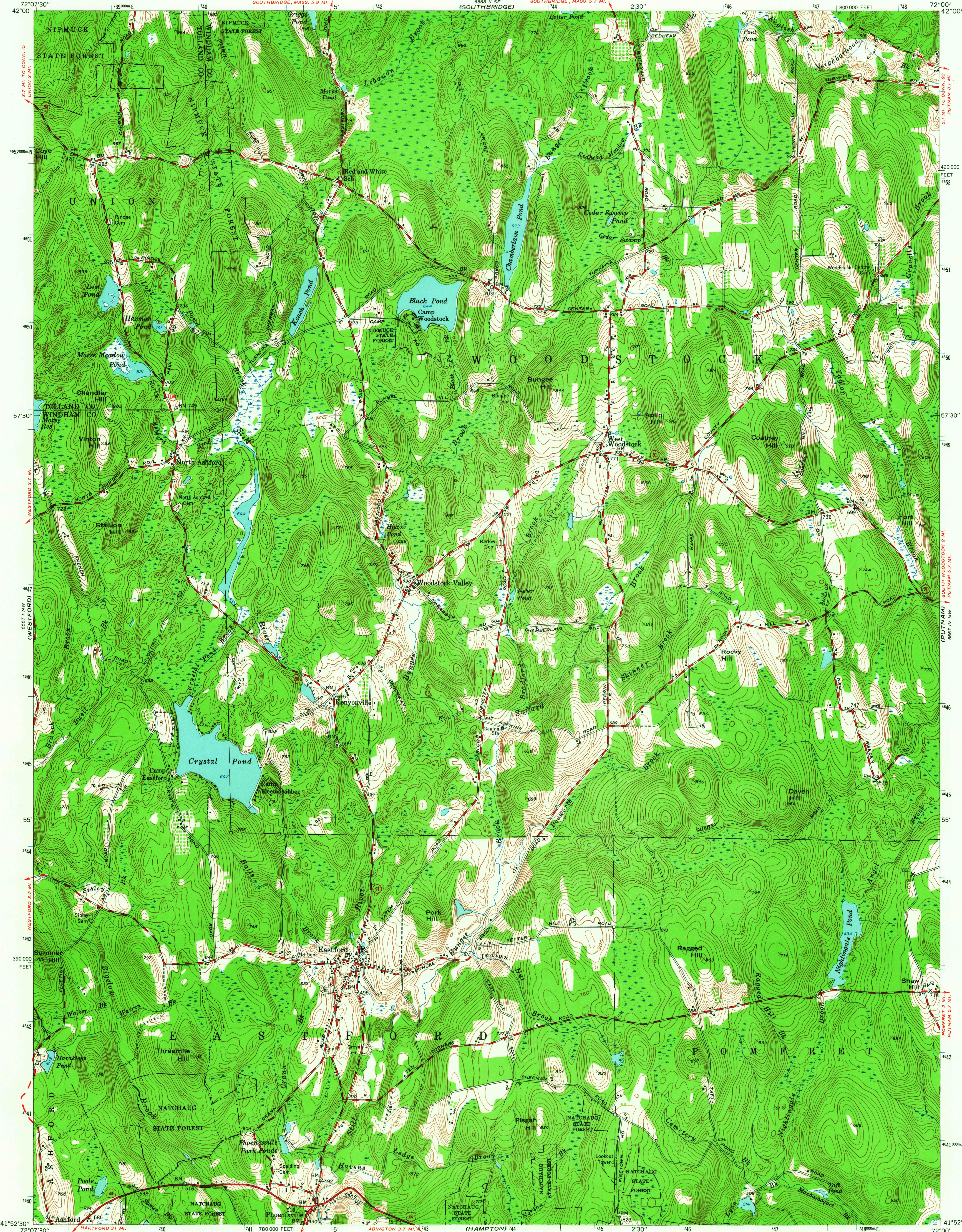
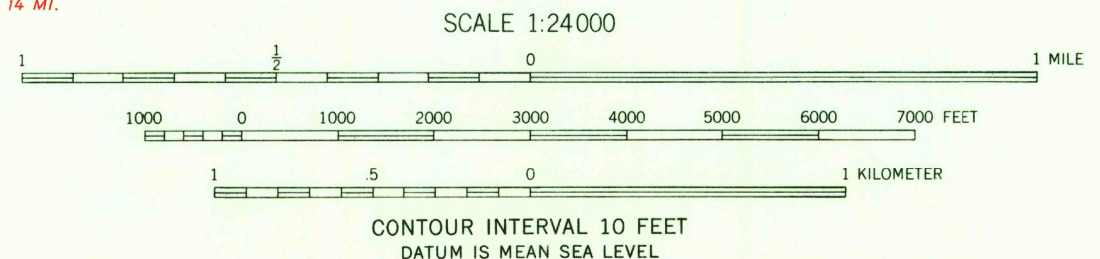
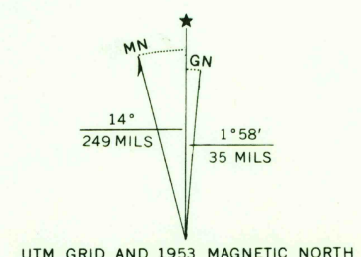


UNITED STATES
DEPARTMENT OF THE INTERIOR
GEOLOGICAL SURVEY

EASTFORD QUADRANGLE
CONNECTICUT
7.5 MINUTE SERIES (TOPOGRAPHIC)



Mapped, edited, and published by the Geological Survey
Control by USGS, USC&GS, and Connecticut Geodetic Survey
Culture and drainage in part compiled from aerial photographs
taken 1941. Topography by plane-table surveys 1942-1943
Revised 1953 from 1951 photography
Polyconic projection. 1927 North American datum
10,000-foot grid based on Connecticut coordinate system
1000-meter Universal Transverse Mercator grid ticks,
zone 18, shown in blue



ROAD CLASSIFICATION		
Heavy-duty	4 LANE (6 LANE)	Light-duty
Medium-duty	2 LANE (6 LANE)	Unimproved dirt
U.S. Route		State Route



EASTFORD, CONN.
N4152.5-W7200/7.5

1953
AMS 6567 1 NE-SERIES V816

THIS MAP COMPLIES WITH NATIONAL MAP ACCURACY STANDARDS
FOR SALE BY U.S. GEOLOGICAL SURVEY, WASHINGTON 25, D. C.
A FOLDER DESCRIBING TOPOGRAPHIC MAPS AND SYMBOLS IS AVAILABLE ON REQUEST

4305
NOV 24 1954