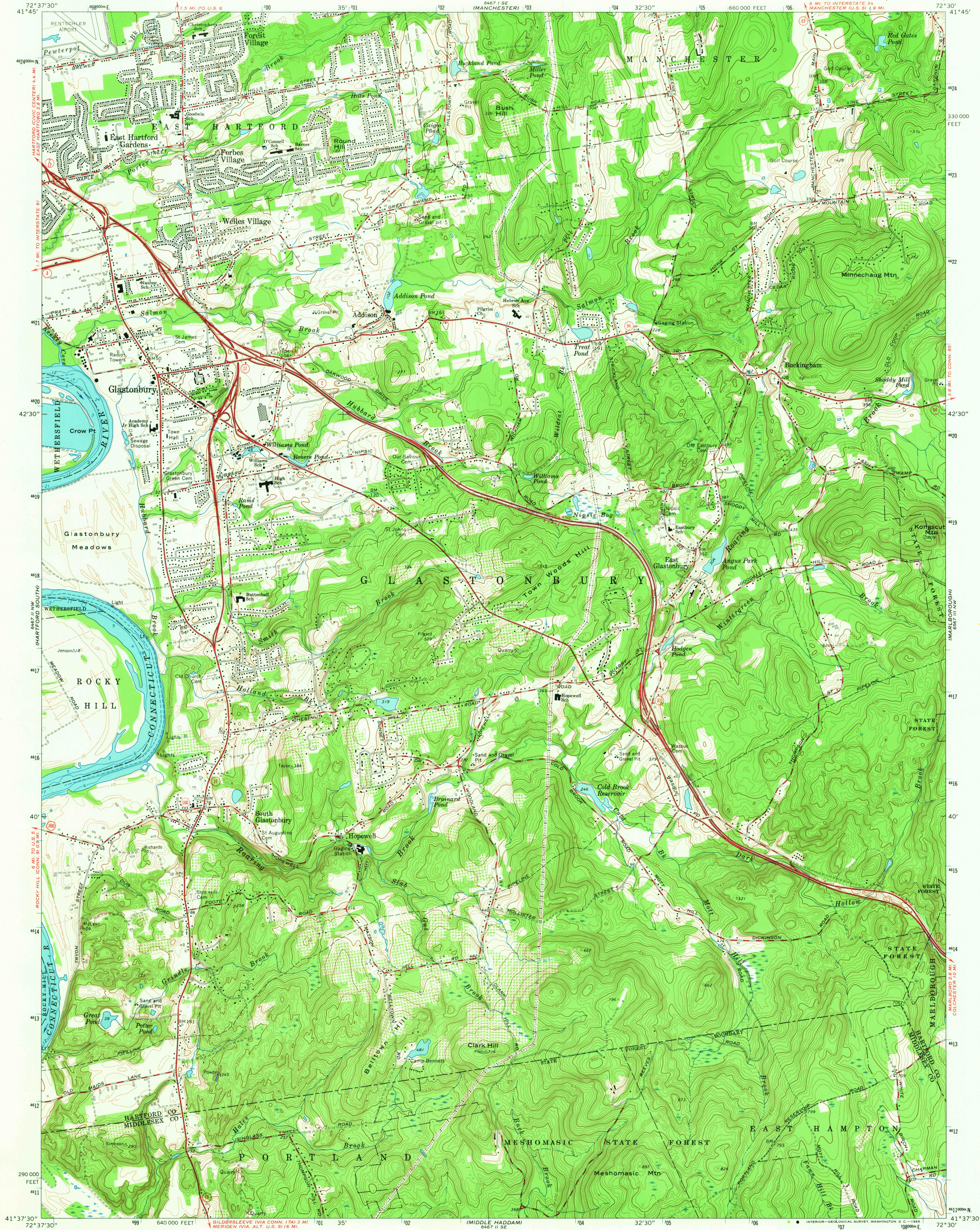
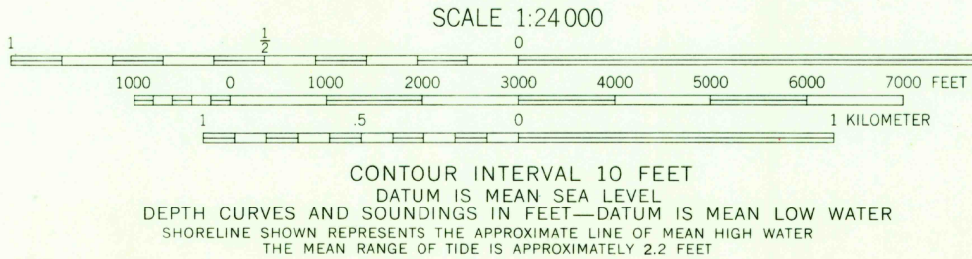
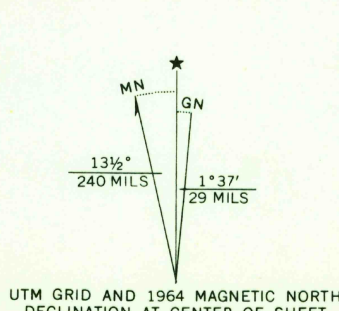


UNITED STATES  
DEPARTMENT OF THE INTERIOR  
GEOLOGICAL SURVEY

GLASTONBURY QUADRANGLE  
CONNECTICUT  
7.5 MINUTE SERIES (TOPOGRAPHIC)



Mapped, edited, and published by the Geological Survey  
Revised in cooperation with State of Connecticut  
Highway Department  
Control by USGS, USC&GS, USCE and  
Connecticut Geodetic Survey  
Topography by planetable surveys 1942-1943. Revised 1964  
Selected hydrographic data compiled from USC&GS Chart 267 (1962)  
This information is not intended for navigational purposes  
Polyconic projection. 1927 North American datum  
10,000-foot grid based on Connecticut coordinate system  
1000-meter Universal Transverse Mercator grid ticks,  
zone 18, shown in blue  
Fine red dashed lines indicate selected fence and field lines where  
generally visible on aerial photographs. This information is unchecked



ROAD CLASSIFICATION  
Heavy-duty ——— Light-duty ———  
Medium-duty ——— Unimproved dirt ———  
State Route ———

GLASTONBURY, CONN.  
N4137.5—W7230.7.5

1964

AMS 6467 II NE—SERIES V816

6155

DEC 8 1965

U.S.G.S.  
FILE COPY  
TOPOGRAPHIC DIVISION