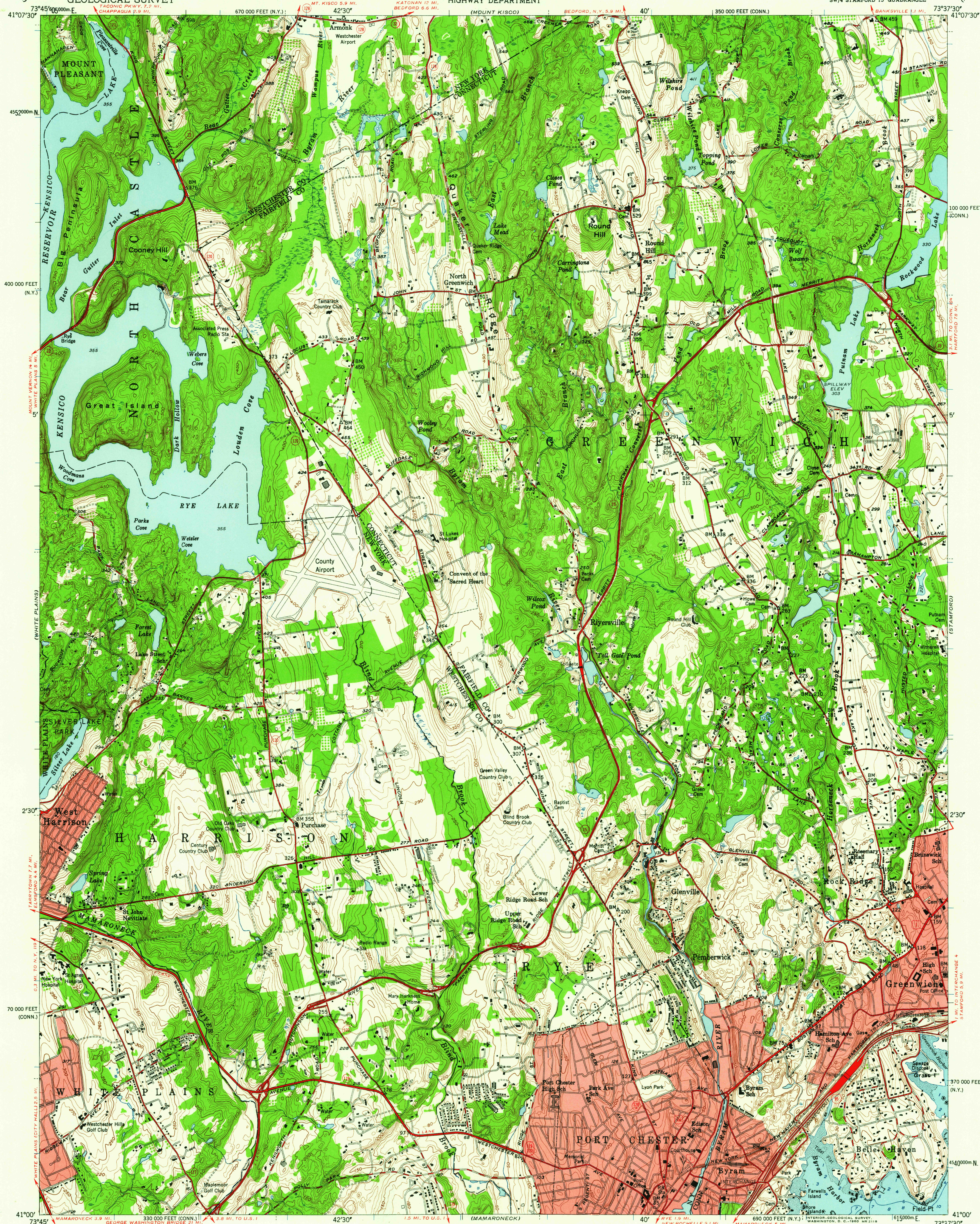


UNITED STATES
DEPARTMENT OF THE INTERIOR
GEOLOGICAL SURVEY

STATE OF CONNECTICUT
HIGHWAY DEPARTMENT

GLENVILLE QUADRANGLE
CONNECTICUT-NEW YORK
7.5 MINUTE SERIES (TOPOGRAPHIC)
SW/4 STAMFORD 15' QUADRANGLE



Mapped, edited, and published by the Geological Survey

Control by USGS, USC&GS, USCE, and
Connecticut Geodetic Survey

Topography from aerial photographs by photogrammetric methods
Aerial photographs taken 1949. Field check 1950-1951

Hydrography compiled from USC&GS chart 222 (1951)

Polycyclic projection. 1927 North American datum
10,000-foot grids based on Connecticut coordinate system,
and New York coordinate system, east zone

1000-meter Universal Transverse Mercator grid ticks,
zone 18, shown in blue

Red tint indicates areas in which only
landmark buildings are shown

Connecticut Turnpike added 1959

SCALE 1:24000

1 0 1000 2000 3000 4000 5000 6000 7000 FEET

1 0 1 2 3 4 5 6 7 8 9 10 KILOMETER

CONTOUR INTERVAL 10 FEET

DATUM IS MEAN SEA LEVEL

DEPTH CURVES AND SOUNDINGS IN FEET-DATUM IS MEAN LOW WATER

SHORELINE SHOWN REPRESENTS THE APPROXIMATE LINE OF MEAN HIGH WATER

THE MEAN RANGE OF TIDE IS APPROXIMATELY 7.5 FEET

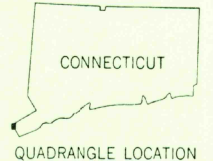
THIS MAP COMPLIES WITH NATIONAL MAP ACCURACY STANDARDS
FOR SALE BY U. S. GEOLOGICAL SURVEY, WASHINGTON 25, D. C.

A FOLDER DESCRIBING TOPOGRAPHIC MAPS AND SYMBOLS IS AVAILABLE ON REQUEST

USGS
Historical File
Topographic Division

ROAD CLASSIFICATION

Heavy-duty ——— Light-duty ———
Medium-duty ——— Unimproved dirt ———
Interstate Route — U. S. Route — State Route



GLENVILLE, CONN.-N.Y.
SW/4 STAMFORD 15' QUADRANGLE
N4100-W7337.5/7.5

1951

U.S.G.S.
FILE COPY
TOPOGRAPHIC DIVISION

APR 22 1960