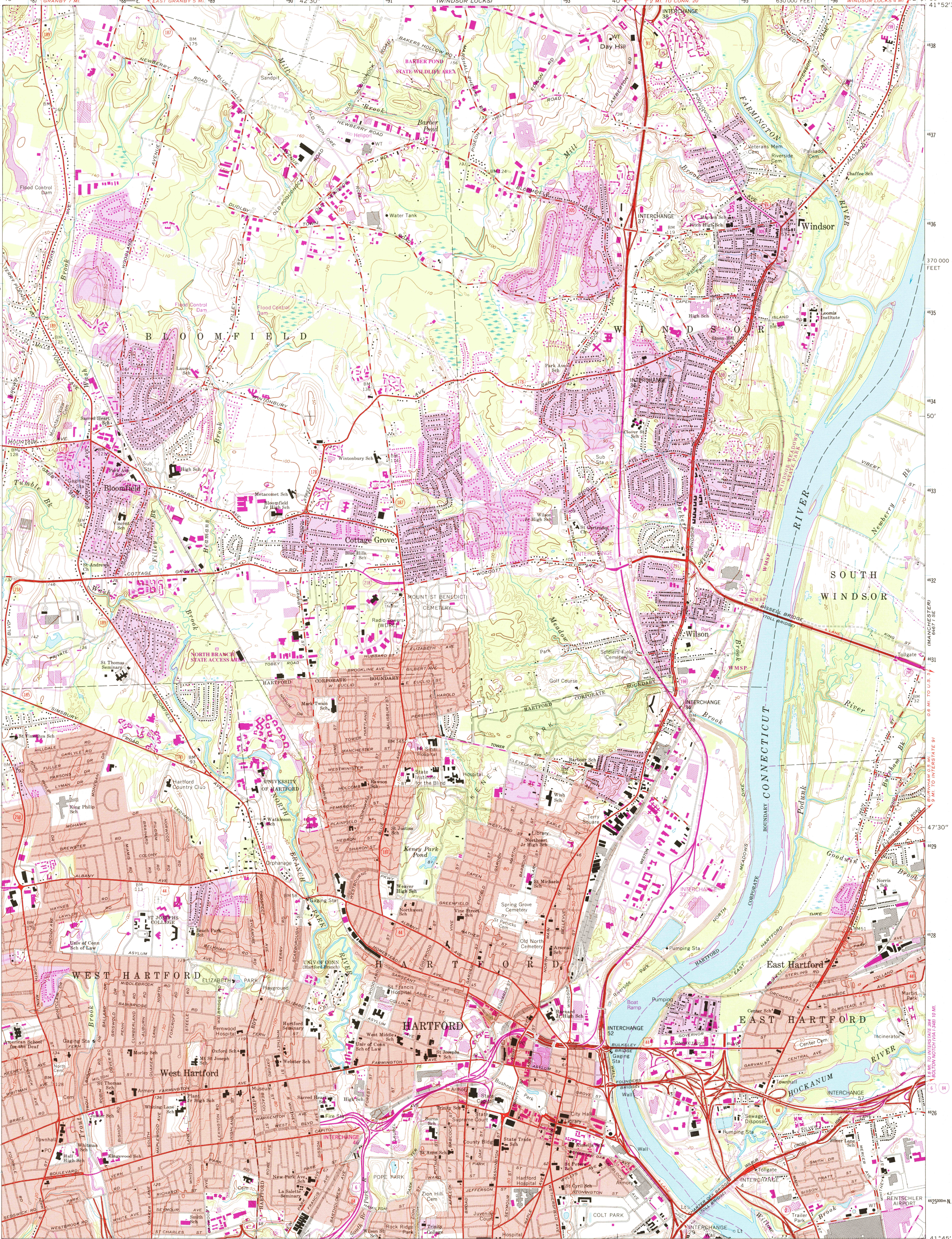


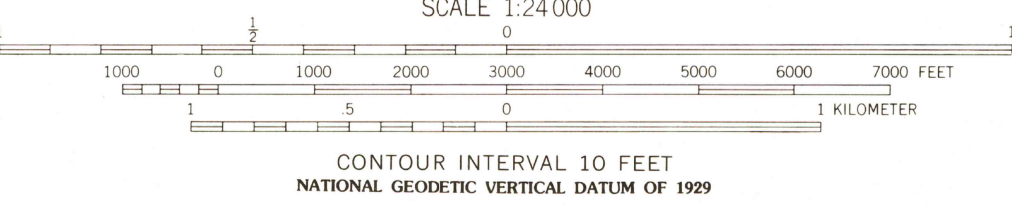
UNITED STATES
DEPARTMENT OF THE INTERIOR
GEOLOGICAL SURVEY

HARTFORD NORTH QUADRANGLE
CONNECTICUT-HARTFORD CO.
7.5 MINUTE SERIES (TOPOGRAPHIC)



Maped by the Geological Survey and City of Hartford
Edited and published by the Geological Survey
Revised in cooperation with Connecticut Highway Department
Control by USGS, NOS/NOAA and Connecticut Geologic Survey
Planimetry by photogrammetric methods from aerial photographs
taken 1941. Topography by planetable surveys 1943. Revised 1964
Polyconic projection. 10,000-foot grid ticks based on Connecticut
coordinate system
1000-meter Universal Transverse Mercator grid ticks,
zone 18, shown in blue
1927 North American Datum
To place on the predicted North American Datum 1983
move the projection lines 5 meters south and
38 meters west as shown by dashed corner ticks
Red tint indicates areas in which only landmark buildings are shown
There may be private inholdings within the boundaries of
the National or State reservations shown on this map

Revisions shown in purple and woodland compiled
from aerial photographs taken 1991 and other sources
Contours not revised. This information not field checked
Map edited 1992
Purple tint indicates extension of urban areas



THIS MAP COMPLIES WITH NATIONAL MAP ACCURACY STANDARDS
FOR SALE BY U.S. GEOLOGICAL SURVEY
DENVER, COLORADO 80225, OR RESTON, VIRGINIA 22092
A FOLDER DESCRIBING TOPOGRAPHIC MAPS AND SYMBOLS IS AVAILABLE ON REQUEST

ROAD CLASSIFICATION
Heavy-duty ——— Light-duty ———
Medium-duty ——— Unimproved dirt ———
Interstate Route — U.S. Route — State Route —

HARTFORD NORTH, CONN.
41072-66-TF-024

1964
REVISED 1992
DMA 6467 1 SW - SERIES V816

