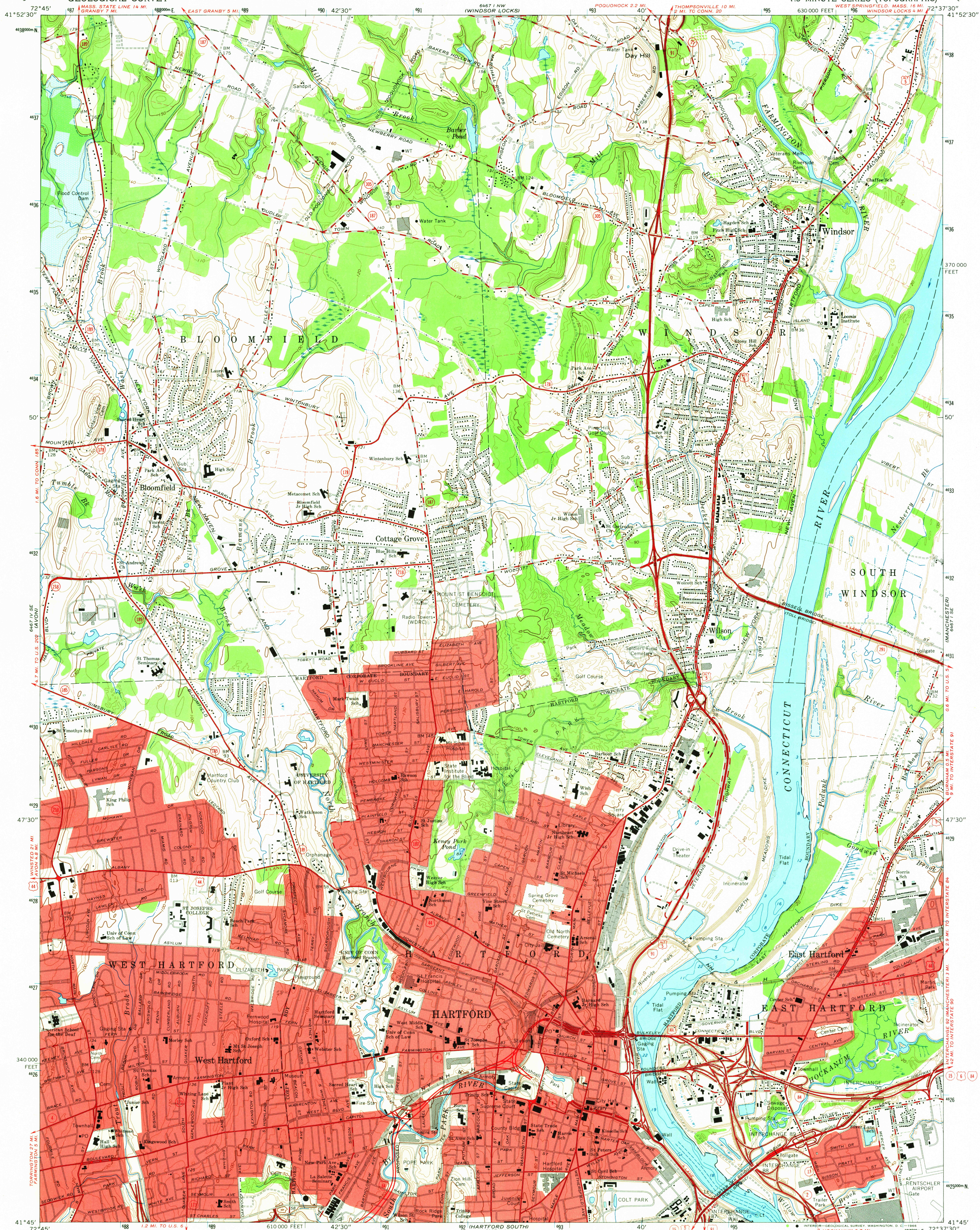


UNITED STATES
DEPARTMENT OF THE INTERIOR
GEOLOGICAL SURVEY

HARTFORD NORTH QUADRANGLE
CONNECTICUT—HARTFORD CO.
7.5 MINUTE SERIES (TOPOGRAPHIC)



Mapped by the Geological Survey and City of Hartford
Edited and published by the Geological Survey
Revised in cooperation with Connecticut Highway Department
Control by USGS, USC&GS, and Connecticut Geodetic Survey
Planimetry by photogrammetric methods from aerial photographs
taken 1941. Topography by planetable surveys 1943. Revised 1964
Selected hydrographic data compiled from USC&GS Chart 267 (1962)
This information is not intended for navigational purposes
Polyconic projection. 1927 North American datum
10,000-foot grid based on Connecticut coordinate system
1000-meter Universal Transverse Mercator grid ticks,
zone 18, shown in blue
Fine red dashed lines indicate selected fence and field lines where
generally visible on aerial photographs. This information is unchecked
Red tint indicates areas in which only landmark buildings are shown
Area covered by dashed light-blue pattern is subject
to controlled inundation

SCALE 1:24,000
CONTOUR INTERVAL 10 FEET
DATUM IS MEAN SEA LEVEL
DEPTH CURVES AND SOUNDINGS IN FEET—DATUM IS MEAN LOW WATER
SHORELINE SHOWN REPRESENTS THE APPROXIMATE LINE OF MEAN HIGH WATER
THE MEAN RANGE OF TIDE IS APPROXIMATELY 1.7 FEET
UTM GRID AND 1964 MAGNETIC NORTH
DECLINATION AT CENTER OF SHEET
FOR SALE BY U.S. GEOLOGICAL SURVEY, WASHINGTON, D.C. 20242
A FOLDER DESCRIBING TOPOGRAPHIC MAPS AND SYMBOLS IS AVAILABLE ON REQUEST

USGS
Historical File
Topographic Division
ROAD CLASSIFICATION
Heavy-duty ——— Light-duty ———
Medium-duty ——— Unimproved dirt ———
Interstate Route ——— U.S. Route ——— State Route ———
HARTFORD NORTH, CONN.
N4145—W7237.5/7.5
1964
AMS 6467 I SW—SERIES V816