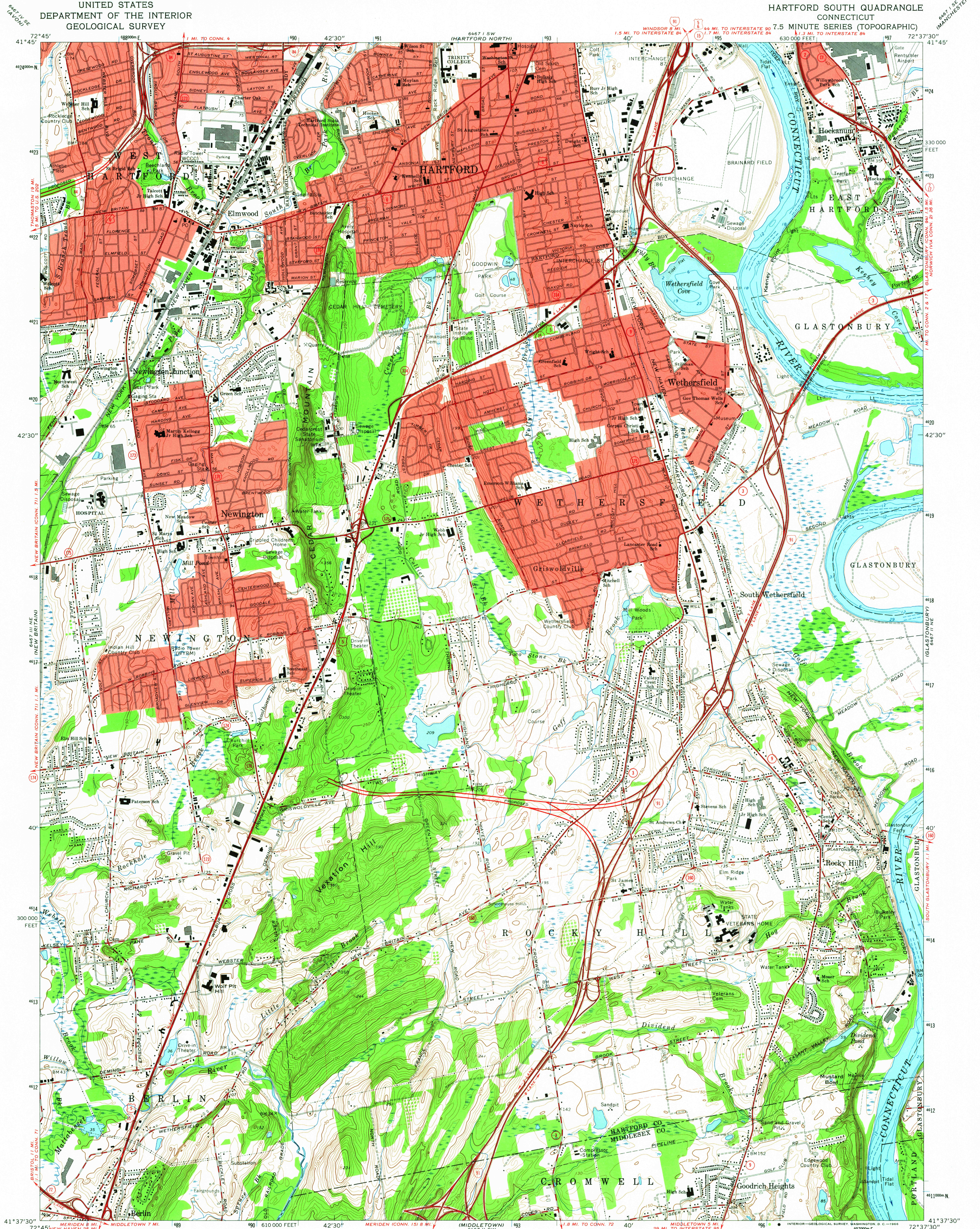
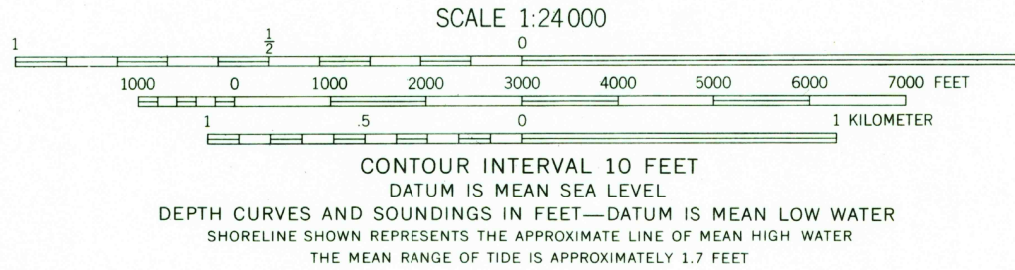


UNITED STATES  
DEPARTMENT OF THE INTERIOR  
GEOLOGICAL SURVEY

HARTFORD SOUTH QUADRANGLE  
CONNECTICUT  
7.5 MINUTE SERIES (TOPOGRAPHIC)



Mapped by the Geological Survey and City of Hartford  
Edited and published by the Geological Survey  
Revised in cooperation with Connecticut Highway Department  
Control by USGS, USC&GS, and Connecticut Geodetic Survey  
Planimetry by photogrammetric methods from aerial photographs taken 1941. Topography by planetable surveys 1942 and 1943. Revised 1964  
Selected hydrographic data compiled from USC&GS Chart 267 (1962)  
This information is not intended for navigational purposes  
Polyconic projection. 1927 North American datum  
10,000-foot grid based on Connecticut coordinate system  
1000-meter Universal Transverse Mercator grid ticks, zone 18, shown in blue  
Fine red dashed lines indicate selected fence and field lines where generally visible on aerial photographs. This information is unchecked  
Red tint indicates areas in which only landmark buildings are shown



USGS  
Historical File  
Topographic Division

ROAD CLASSIFICATION

Heavy-duty	Light-duty
Medium-duty	Unimproved dirt
Interstate Route	U.S. Route
	State Route

QUADRANGLE LOCATION

U.S.G.S.

HARTFORD SOUTH, CONN.  
N4137.5—W7237.5/7.5

1964

AMS 5467 II NW—SERIES V816

FEB 17 1966