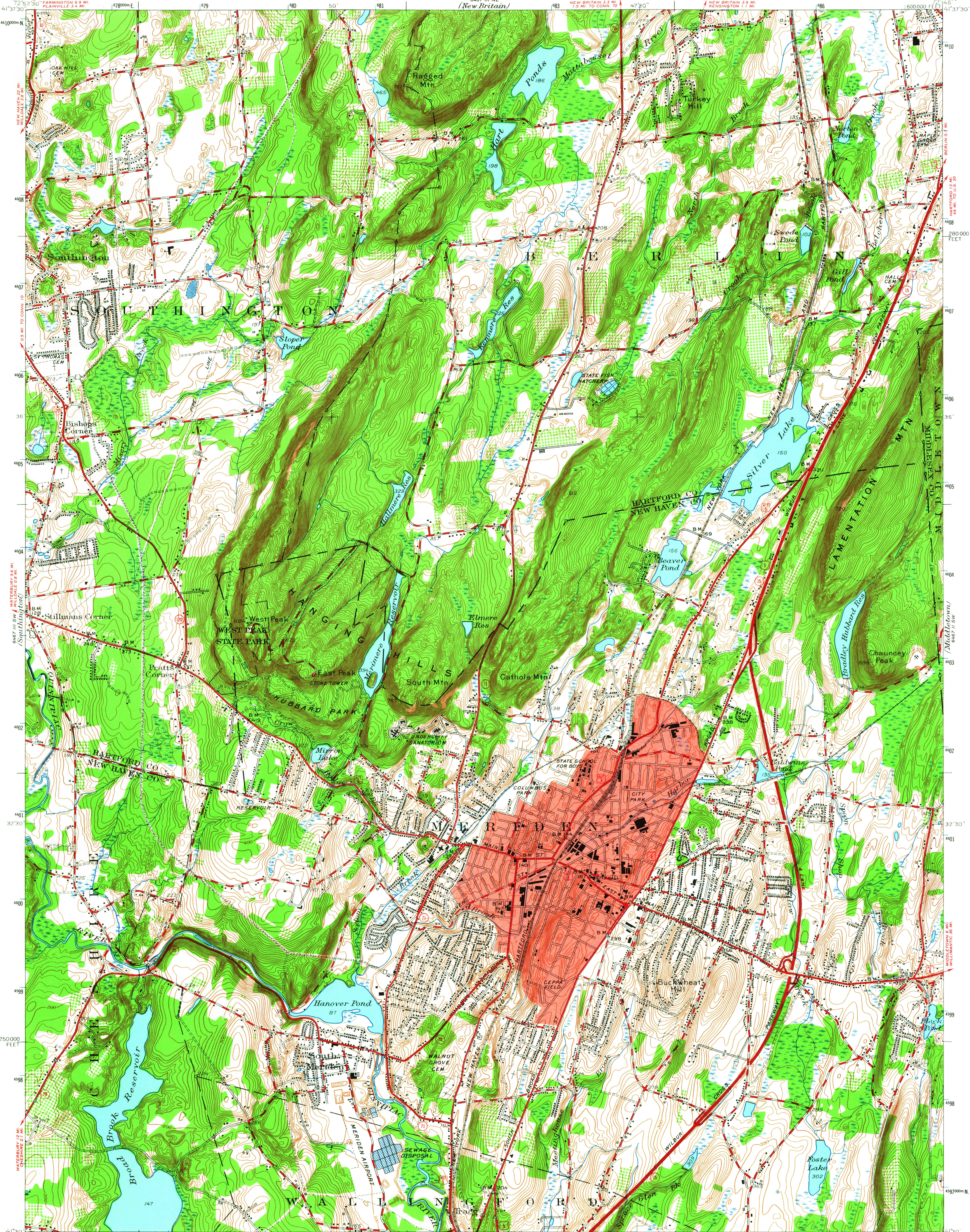
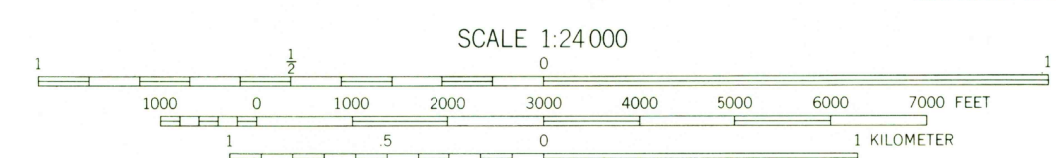
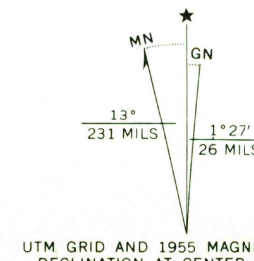


UNITED STATES
DEPARTMENT OF THE INTERIOR
GEOLOGICAL SURVEY

MERIDEN QUADRANGLE
CONNECTICUT
7.5-MINUTE SERIES (TOPOGRAPHIC)



Mapped, edited, and published by the Geological Survey
Control by USGS, USCBGS, and Connecticut Geodetic Survey
Topography by plane-table surveys 1943-1944. Revised 1955
Polyconic projection, 1927 North American datum
10,000-foot grid based on Connecticut coordinate system
Red tint indicates area in which only landmark buildings
are shown
1000-meter Universal Transverse Mercator grid ticks,
zone 18, shown in blue



CONTOUR INTERVAL 10 FEET
DATUM IS MEAN SEA LEVEL

THIS MAP COMPLIES WITH NATIONAL MAP ACCURACY STANDARDS
FOR SALE BY U. S. GEOLOGICAL SURVEY, WASHINGTON 25, D. C.
A FOLDER DESCRIBING TOPOGRAPHIC MAPS AND SYMBOLS IS AVAILABLE ON REQUEST



ROAD CLASSIFICATION			
Heavy-duty	4 LANE 16 LANE	Light-duty	
Medium-duty	4 LANE 16 LANE	Unimproved dirt	=====
	U.S. Route		State Route

USGS
Historical File
Topographic Division
MERIDEN, CONN.
N4130-W7245/7.5
1955
AMS 6467 III SE-SERIES V816

6090
FEB 3 1965