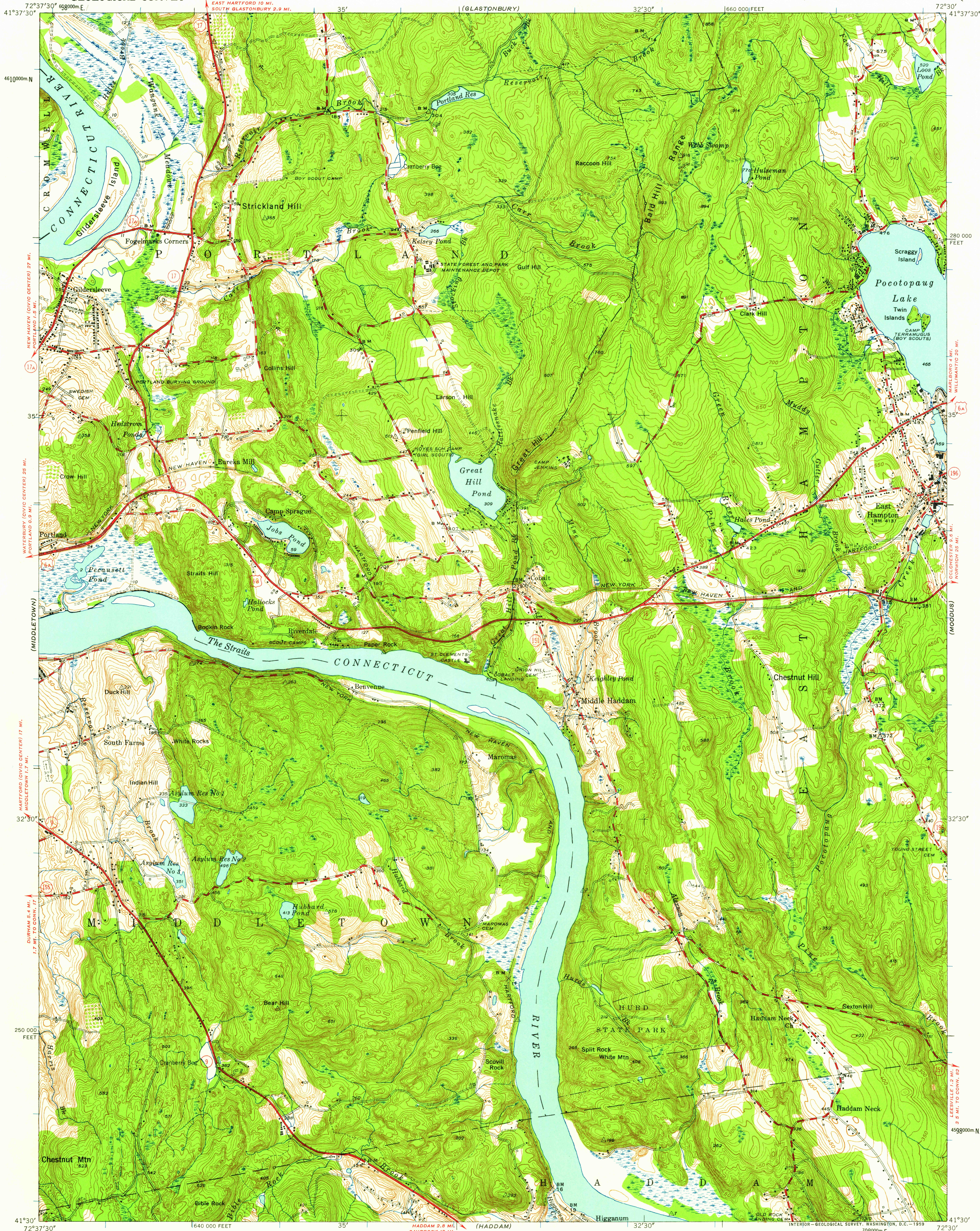
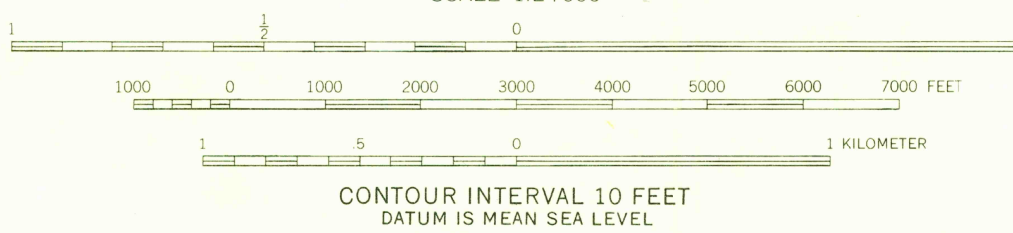
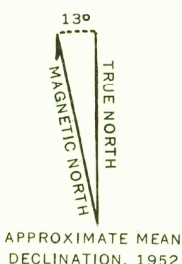


UNITED STATES  
DEPARTMENT OF THE INTERIOR  
GEOLOGICAL SURVEY

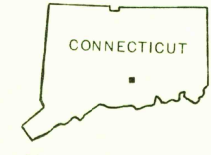
MIDDLE HADDAM QUADRANGLE  
CONNECTICUT-MIDDLESEX CO.  
7.5 MINUTE SERIES (TOPOGRAPHIC)  
SE/4 MIDDLETOWN 15' QUADRANGLE



Maped, edited and published by the Geological Survey  
Control by USGS, USC&GS, USCE, and  
Connecticut Geodetic Survey  
Culture and drainage in part compiled from aerial photographs  
Topography by plane-table surveys 1942-1943. Revised 1952  
Polyconic projection. 1927 North American datum  
10,000-foot grid based on Connecticut coordinate system  
1000-meter Universal Transverse Mercator grid ticks,  
zone 18. shown in blue



USGS  
Historical File  
Topographic Division



ROAD CLASSIFICATION  
Heavy-duty 4 LANE 6 LANE Light-duty  
Medium-duty 4 LANE 6 LANE Unimproved dirt  
U. S. Route State Route

U.S.G.S.  
FILE COPY  
TOPOGRAPHIC DIVISION

MIDDLE HADDAM, CONN.  
SE/4 MIDDLETOWN 15' QUADRANGLE  
N4130-W7230/7.5

1952

THIS MAP COMPLIES WITH NATIONAL MAP ACCURACY STANDARDS  
FOR SALE BY U. S. GEOLOGICAL SURVEY, WASHINGTON 25, D. C.  
A FOLDER DESCRIBING TOPOGRAPHIC MAPS AND SYMBOLS IS AVAILABLE ON REQUEST

FEB 17 1959  
2375