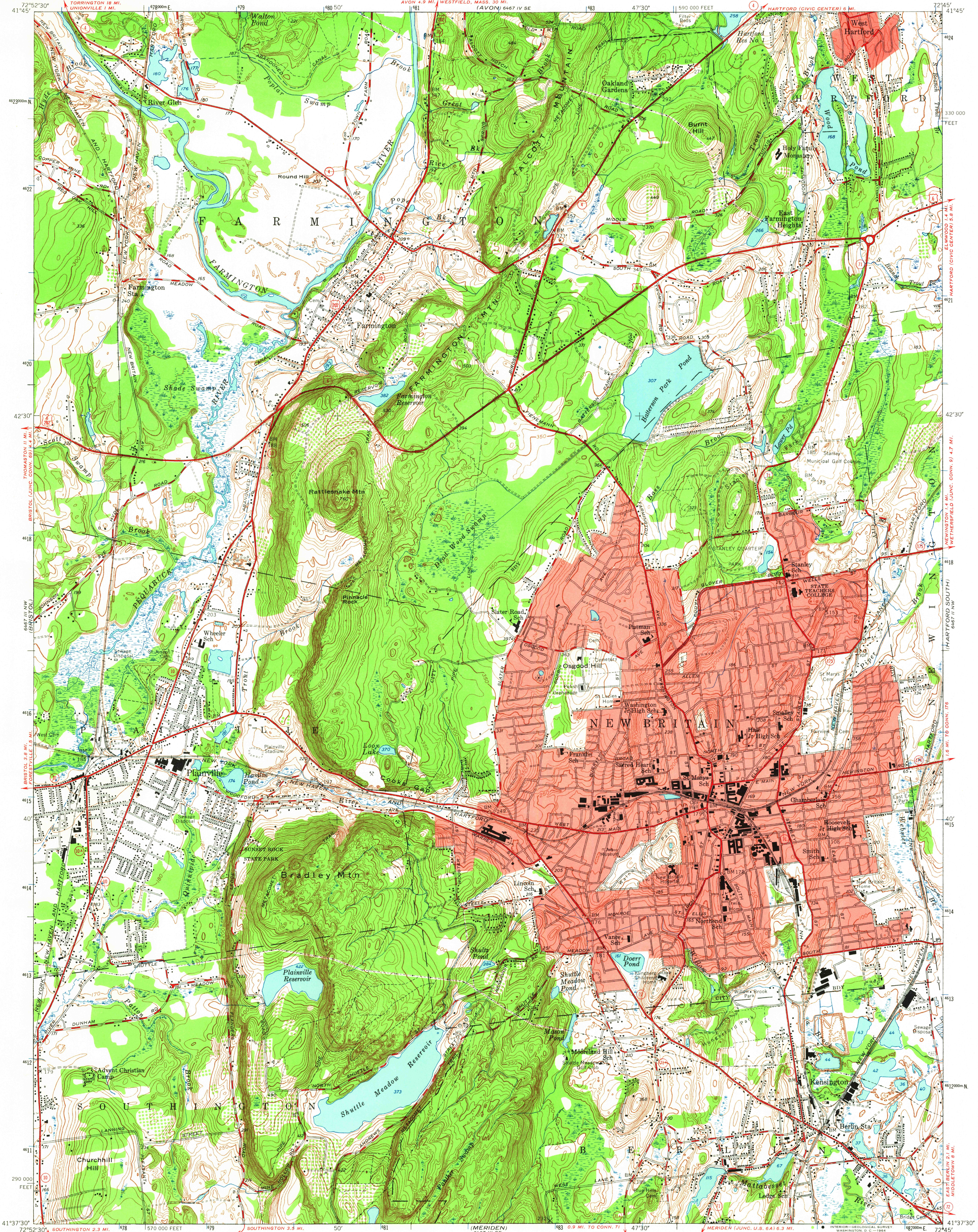
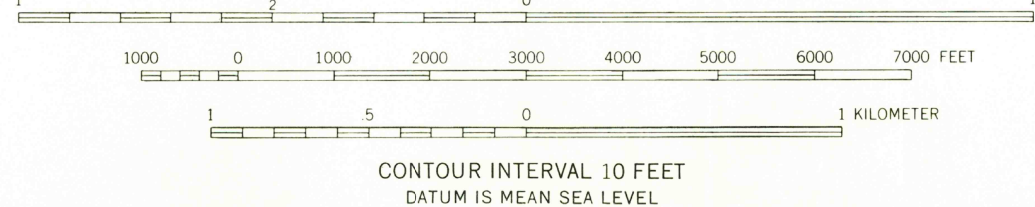
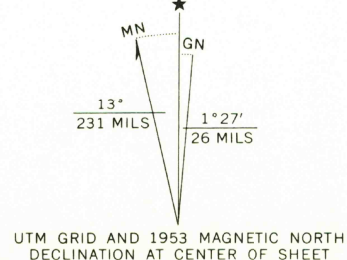


UNITED STATES
DEPARTMENT OF THE INTERIOR
GEOLOGICAL SURVEY

NEW BRITAIN QUADRANGLE
CONNECTICUT—HARTFORD CO
7.5 MINUTE SERIES (TOPOGRAPHIC)



Mapped by the Geological Survey and City of Hartford
Edited and published by the Geological Survey
Control by USGS, USC&GS, and Connecticut Geodetic Survey
Culture and drainage in part compiled from aerial photographs
taken 1941. Topography by plane-table surveys 1943. Revised
1953 from 1951 photography
Polyconic projection. 1927 North American datum
10,000-foot grid based on Connecticut coordinate system
Red tint indicates areas in which only
landmark buildings are shown
1000-meter Universal Transverse Mercator grid ticks,
zone 18, shown in blue



USGS
Historical File
Topographic Division
CONNECTICUT
QUADRANGLE LOCATION

ROAD CLASSIFICATION
Heavy-duty 4 LANE 6 LANE Light-duty
Medium-duty 4 LANE 6 LANE Unimproved dirt
U.S. Route State Route

NEW BRITAIN, CONN.
N4137.5-W7245/7.5

1953
AMS 6467 III NE-SERIES V816

THIS MAP COMPLIES WITH NATIONAL MAP ACCURACY STANDARDS
FOR SALE BY U. S. GEOLOGICAL SURVEY, WASHINGTON 25, D. C.
A FOLDER DESCRIBING TOPOGRAPHIC MAPS AND SYMBOLS IS AVAILABLE ON REQUEST

OCT 9 1964
8155
COPY
TOPOGRAPHIC DIVISION