

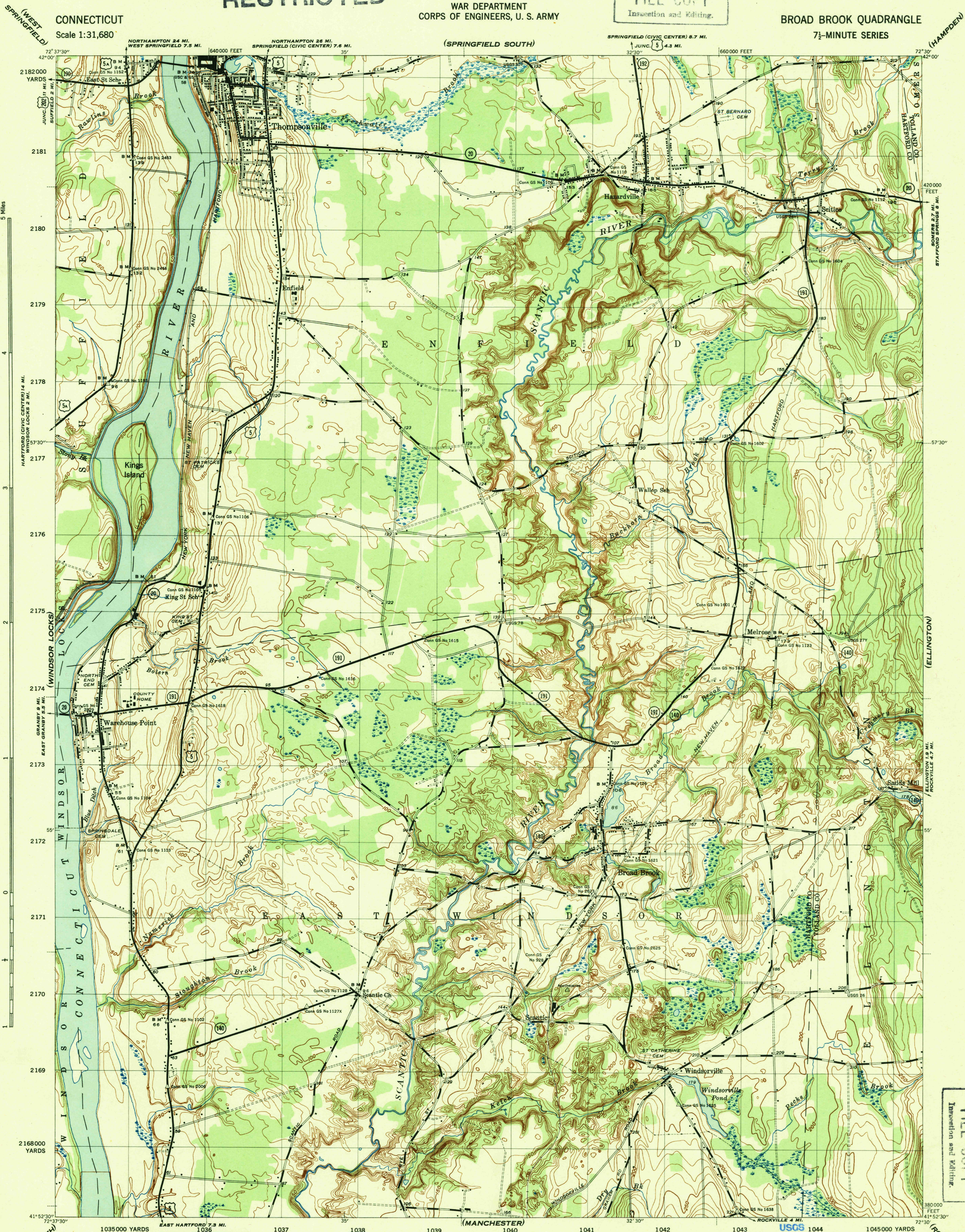
RESTRICTED

WAR DEPARTMENT
CORPS OF ENGINEERS, U. S. ARMY

FILE COPY
Inspection and Editing.

BROAD BROOK QUADRANGLE
7½-MINUTE SERIES

CONNECTICUT
Scale 1:31,680



Maped by U. S. Geological Survey under direction of the
Chief of Engineers, U. S. Army, 1943
Topography by U. S. Geological Survey
Control by U. S. C. & G. S., U. S. G. S. and Conn. G. S.
Polyconic projection, 1927 North American datum
This map complies with national standard map accuracy requirements

ROAD CLASSIFICATION
Dependable hard-surface ————— U. S. Route (90)
heavy-duty road ————— State Route (281)
Secondary, hard-surface —————
all-weather road —————
Dirt road —————
More than two lanes indicated by note along road with tick at point of change

Scale 1:31,680
1 500 1000 1500 2000 2500 Yards
1 1000 2000 3000 4000 5000 6000 7000 Feet

CONTOUR INTERVAL 10 FEET
DATUM IS MEAN SEA LEVEL

ONE THOUSAND YARD GRID COMPUTED FROM "GRID SYSTEM FOR PROGRESSIVE MAPS
IN THE U. S." ZONE A, U. S. C. & G. S. SPECIAL PUBLICATION NO. 59
THE LAST THREE DIGITS OF THE GRID NUMBERS ARE OMITTED
TEN THOUSAND FOOT GRID BASED ON CONNECTICUT PLANE COORDINATE SYSTEM
NOTE: OFFICERS USING THIS MAP WILL MARK HEREON CORRECTIONS AND ADDITIONS WHICH COME
TO THEIR ATTENTION AND MAIL DIRECT TO "THE CHIEF OF ENGINEERS, WASHINGTON, D. C."

APPROXIMATE MEAN
DECLINATION 1961
ANNUAL MAGNETIC CHANGE 1'
INCREASE

RESTRICTED

BROAD BROOK, CONN.
N4152.5-W7230/7.5
Edition of 1944

U. S. G. S.
FILE COPY
Inspection and Editing.

MAR 14 1943