

AVON (JUNC. U. S. NO. 44) 11.8 MI.
FARMINGTON 7.7 MI.
PLAINVILLE 3.6 MI.

UNITED STATES
DEPARTMENT OF THE INTERIOR
BUREAU OF GEOLOGICAL SURVEY

WAR DEPARTMENT
CORPS OF ENGINEERS, U. S. ARMY
(New Britain)

JUNC. U. S. NO. 6 8.9 MI.
NEW BRITAIN (MAIN ST.) 3.4 MI.
JUNC. STATE NO. 72 1.6 MI.

CONNECTICUT
MERIDEN QUADRANGLE
7 1/2-MINUTE SERIES

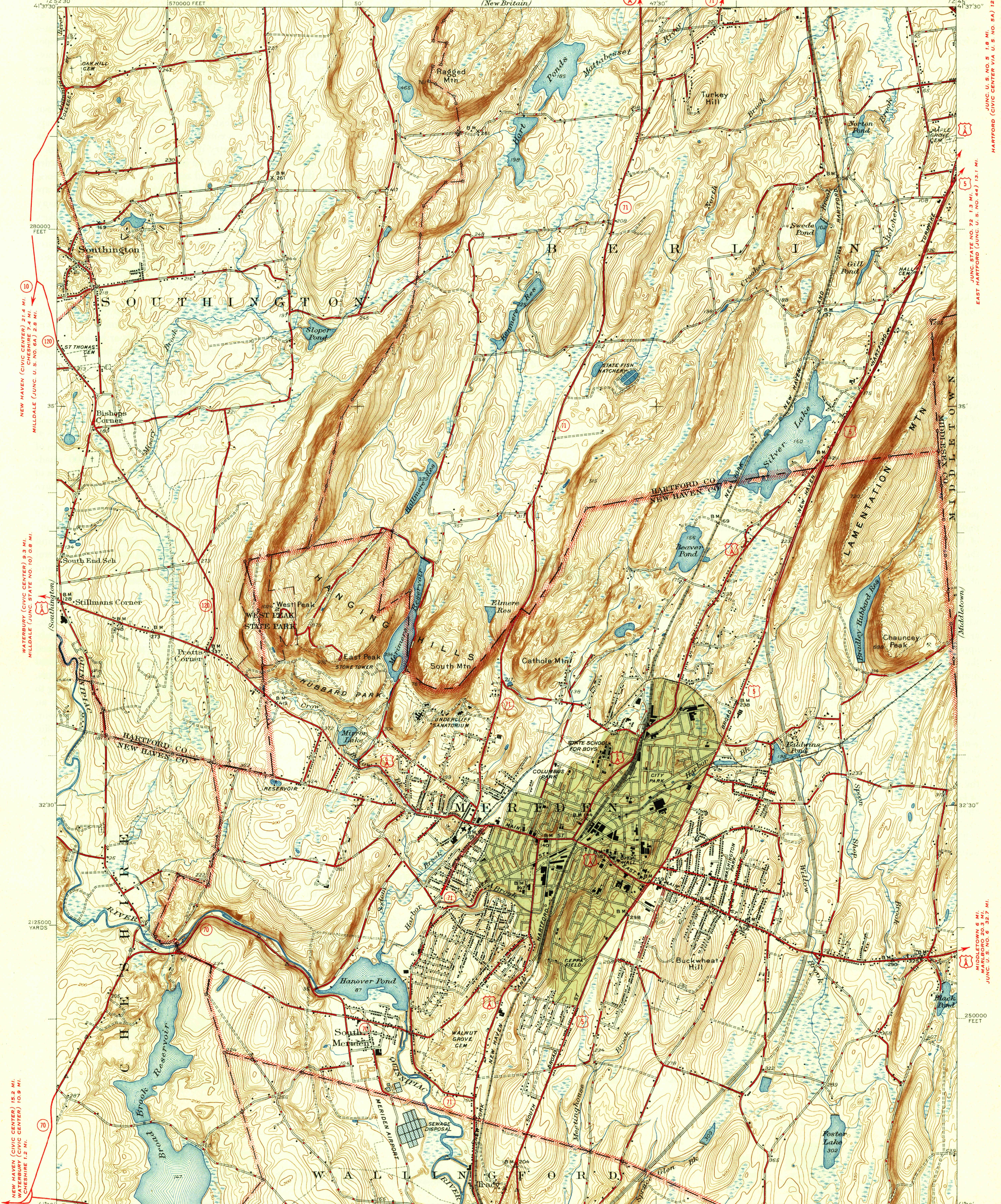
HARTFORD (CIVIC CENTER VIA U. S. NO. 54) 12.5 MI.
HARTFORD (CIVIC CENTER) 13.1 MI.
JUNC. U. S. NO. 5 1.8 MI.
JUNC. U. S. NO. 44 1.3 MI.

WATERBURY (CIVIC CENTER) 9.3 MI.
MILDALE (JUNC. U. S. NO. 6A) 0.8 MI.

NEW HAVEN (CIVIC CENTER) 15.2 MI.
WATERBURY (CIVIC CENTER) 10.9 MI.
CHESHIRE 1.2 MI.

MIDDLETOWN 6 MI.
MIDDLETOWN 20.3 MI.
JUNC. U. S. NO. 6 32.7 MI.

GUILFORD 25.000 FEET

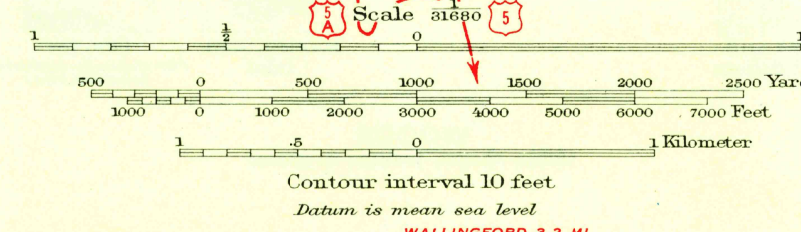


Mapped by the Geological Survey
1943-1944
Gray tint indicates area in which only
landmark buildings are shown
YALEVILLE 2.5 MI.

FILE COPY

JUL 6 1944

N.C.I.C.



USGS
Historical File
Topographic Division
ROAD CLASSIFICATION
1946
Dependable hard-surface heavy-duty road
Secondary hard-surface all-weather road
Loose-surface graded
Unsurfaced, graded
Dirt road
More than two lanes indicated along road with tick at point of change
U. S. Route
State Route

Polyconic projection, 1927 North American datum
5000 yard grid based on U.S. zone system, A
10000 foot grid based on Connecticut
rectangular coordinate system
MERIDEN, CONN.
Edition of 1946
N4130-W7245/7.5