

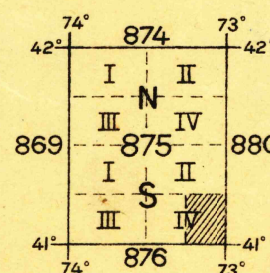


Field work and compilation under the direction of
Col. W. M. Black, Corps of Engineers, U. S. A.
Department Engineer, Eastern Department.
May 1915
Field work under the immediate supervision of
2nd Lieut. J. P. Leavenworth, C. A. C.
Base map from U. S. G. S. engravings.
Corrections and additions by Department
Engineer, Eastern Department.
Soundings expressed in feet and referred to mean
low water, are from U. S. C. & G. S. Charts.
Nos. 115 & 116

(Setavket)
Scale 62500
1 0 1 2 3 4 miles
1000 0 1000 2000 3000 4000 5000 6000 7000 yards
1 0 1 2 3 4 5 kilometers
Contour Interval 20 feet
Datum is mean sea level

NOTE: OFFICERS USING THIS MAP WILL MARK HEREON CORRECTIONS AND ADDITIONS WHICH COME
TO THEIR ATTENTION AND MAIL DIRECT TO "THE CHIEF OF ENGINEERS, WASHINGTON, D.C."

Engineer Reproduction Plant, U. S. Army, Washington Barracks, D. C.
1920



APPROXIMATE MEAN
DECLINATION 1920

BRIDGEPORT, Conn.

U. S. Board on
Geographical Names