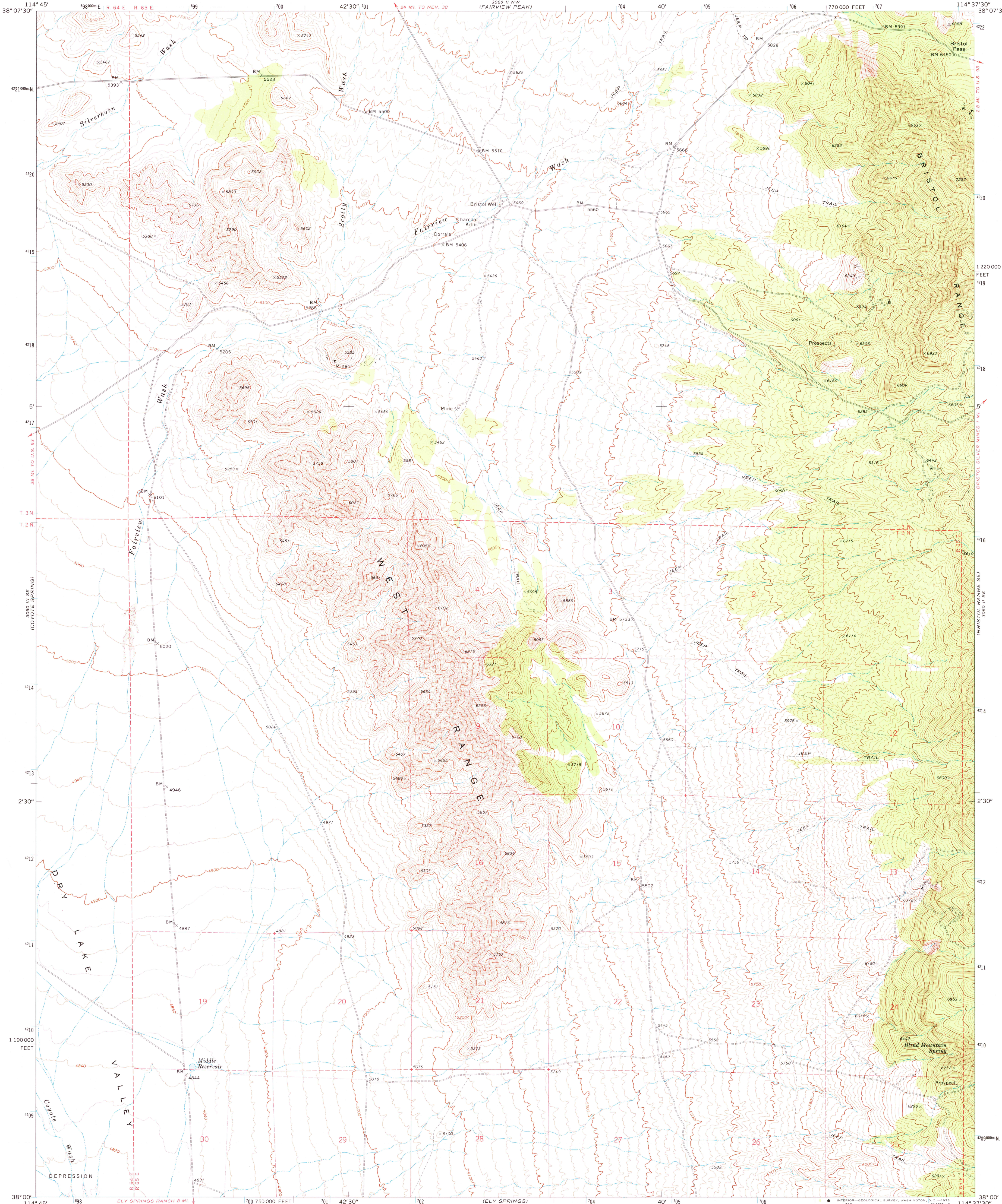


(BAILEY WASH.)  
3060 11 NE  
3059 11 NE

UNITED STATES  
DEPARTMENT OF THE INTERIOR  
GEOLOGICAL SURVEY

BRISTOL WELL QUADRANGLE  
NEVADA—LINCOLN CO.  
7.5 MINUTE SERIES (TOPOGRAPHIC)  
SW 1/4 BRISTOL RANGE 15' QUADRANGLE

3060 11 NE  
(BRISTOL RANGE NE)



Mapped, edited, and published by the Geological Survey

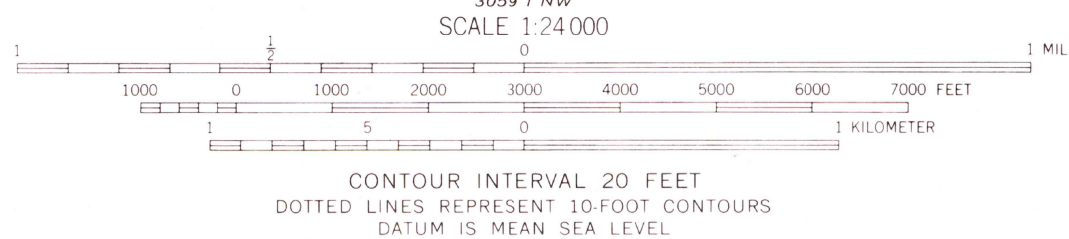
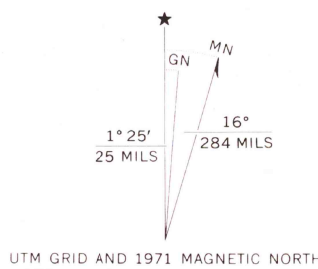
Control by USGS and USC&GS

Topography by photogrammetric methods from aerial photographs taken 1970. Field checked 1971

Projection and 10,000-foot grid ticks: Nevada coordinate system, east zone (transverse Mercator)

1000-meter Universal Transverse Mercator grid ticks, zone 11, shown in blue. 1927 North American datum

Fine red dashed lines indicate selected fence lines  
Where omitted, land lines have not been established or are not shown because of insufficient data



ROAD CLASSIFICATION	
Primary highway, hard surface	Light-duty road, hard or improved surface
Secondary highway, hard surface	Unimproved road
Interstate Route	U. S. Route
	State Route

BRISTOL WELL, NEV.  
SW 1/4 BRISTOL RANGE 15' QUADRANGLE  
N3800—W11437.5/7.5

1971

AMS 3060 11 SW—SERIES V896

THIS MAP COMPLIES WITH NATIONAL MAP ACCURACY STANDARDS  
FOR SALE BY U. S. GEOLOGICAL SURVEY, DENVER, COLORADO 80225, OR WASHINGTON, D. C. 20242  
A FOLDER DESCRIBING TOPOGRAPHIC MAPS AND SYMBOLS IS AVAILABLE ON REQUEST

NOV 21 1973