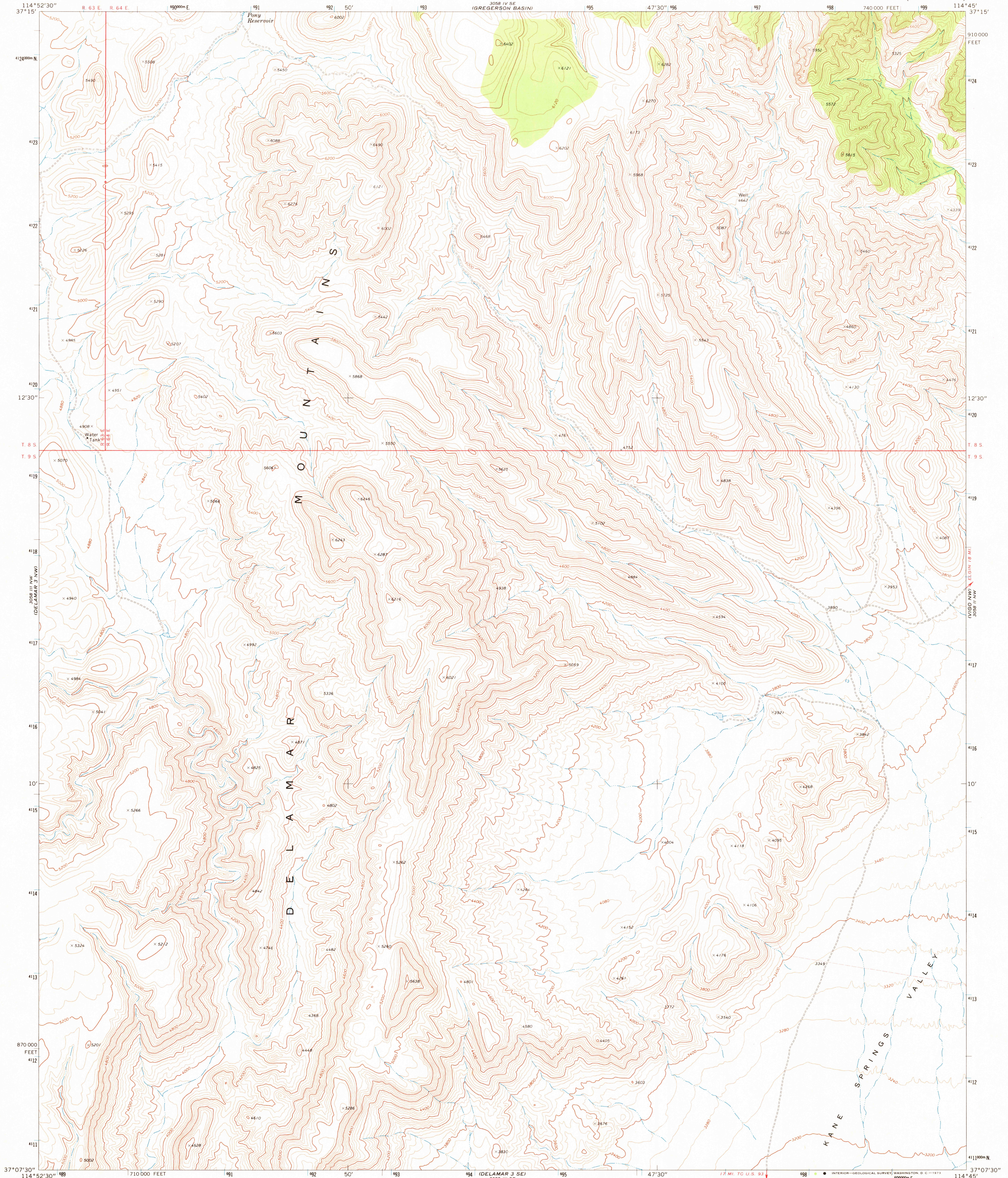


UNITED STATES  
DEPARTMENT OF THE INTERIOR  
GEOLOGICAL SURVEY

DELAMAR 3 NE QUADRANGLE  
NEVADA—LINCOLN CO.  
7.5 MINUTE SERIES (TOPOGRAPHIC)



Mapped, edited, and published by the Geological Survey

Control by USGS and USC&GS

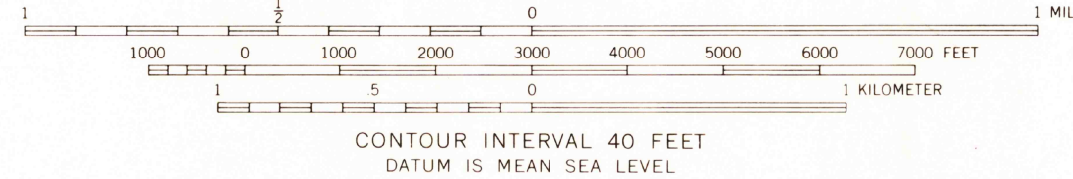
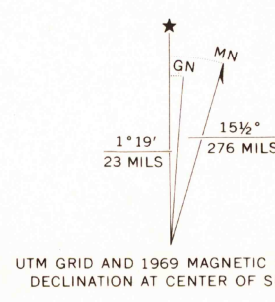
Topography by photogrammetric methods from aerial

photographs taken 1967. Field checked 1969

Polyconic projection. 1927 North American datum  
10,000-foot grid based on Nevada coordinate system, east zone  
1000-meter Universal Transverse Mercator grid ticks,  
zone 11, shown in blue

Fine red dashed lines indicate selected fence lines

Where omitted, land lines have not been established



ROAD CLASSIFICATION	
Primary highway, hard surface	Light-duty road, hard or improved surface
Secondary highway, hard surface	Unimproved road
Interstate Route	U. S. Route
	State Route

THIS MAP COMPLIES WITH NATIONAL MAP ACCURACY STANDARDS  
FOR SALE BY U. S. GEOLOGICAL SURVEY, DENVER, COLORADO 80225, OR WASHINGTON, D. C. 20242  
A FOLDER DESCRIBING TOPOGRAPHIC MAPS AND SYMBOLS IS AVAILABLE ON REQUEST

USGS  
HISTORICAL FILE  
TOPOGRAPHIC DIVISION

DELAMAR 3 NE, NEV.  
N3707.5—W11445/7.5  
1969  
AMS 3058 III NE—SERIES V896

MAY 11 1973

3/75