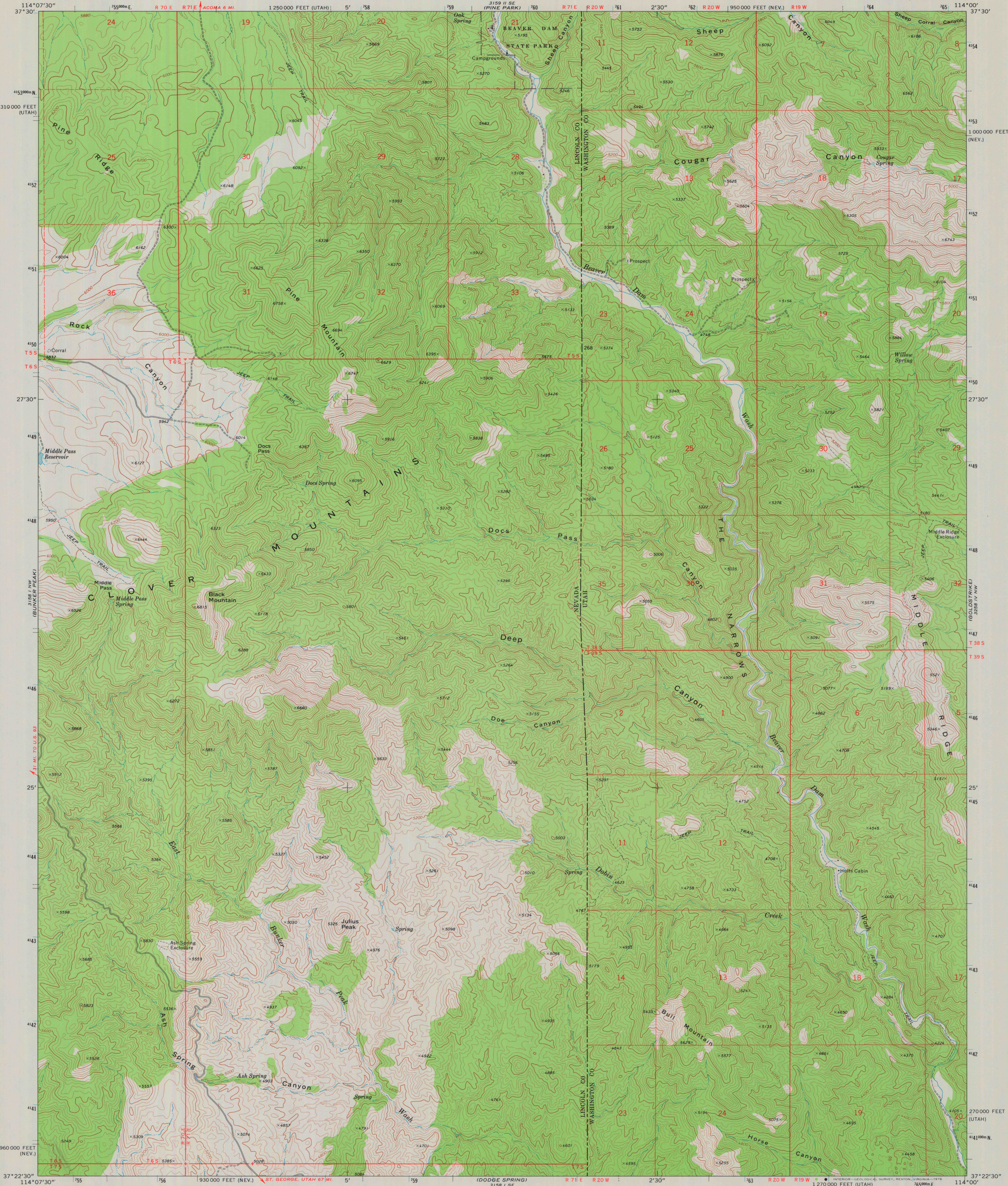
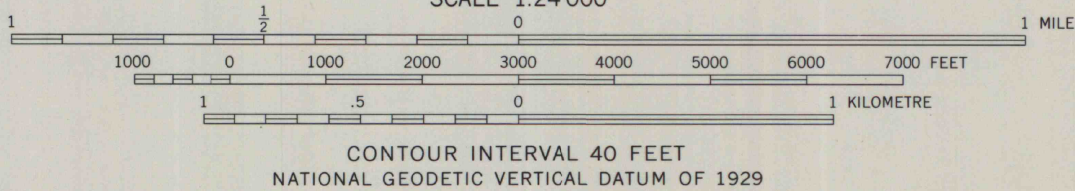
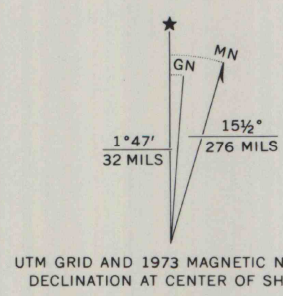


UNITED STATES
DEPARTMENT OF THE INTERIOR
GEOLOGICAL SURVEY

DOCS PASS QUADRANGLE
NEVADA-UTAH
7.5 MINUTE SERIES (TOPOGRAPHIC)



Mapped, edited, and published by the Geological Survey
Control by USGS and NOS/NOAA
Topography by photogrammetric methods from aerial
photographs taken 1972. Field checked 1973
Projection: Nevada coordinate system, east zone
(transverse Mercator)
10,000-foot grid ticks based on Nevada coordinate system,
east zone, and Utah coordinate system, south zone
1000-metre Universal Transverse Mercator grid ticks,
zone 11, shown in blue. 1927 North American datum
Fine red dashed lines indicate selected fence lines
Where omitted, land lines have not been established



ROAD CLASSIFICATION
Primary highway, light-duty road, hard or improved surface
Secondary highway, hard surface
Unimproved road
Interstate Route
U.S. Route
State Route



MAP AND AIR PHOTO
LIBRARY

DOCS PASS, NEV.-UTAH
N3722.5-W11400.7.5

OCT 15 1976

1973

University of Wisconsin
Madison

AMS 3158 1 NE-SERIES V896

THIS MAP COMPLIES WITH NATIONAL MAP ACCURACY STANDARDS
FOR SALE BY U.S. GEOLOGICAL SURVEY, DENVER, COLORADO 80225, OR RESTON, VIRGINIA 22092
A FOLDER DESCRIBING TOPOGRAPHIC MAPS AND SYMBOLS IS AVAILABLE ON REQUEST