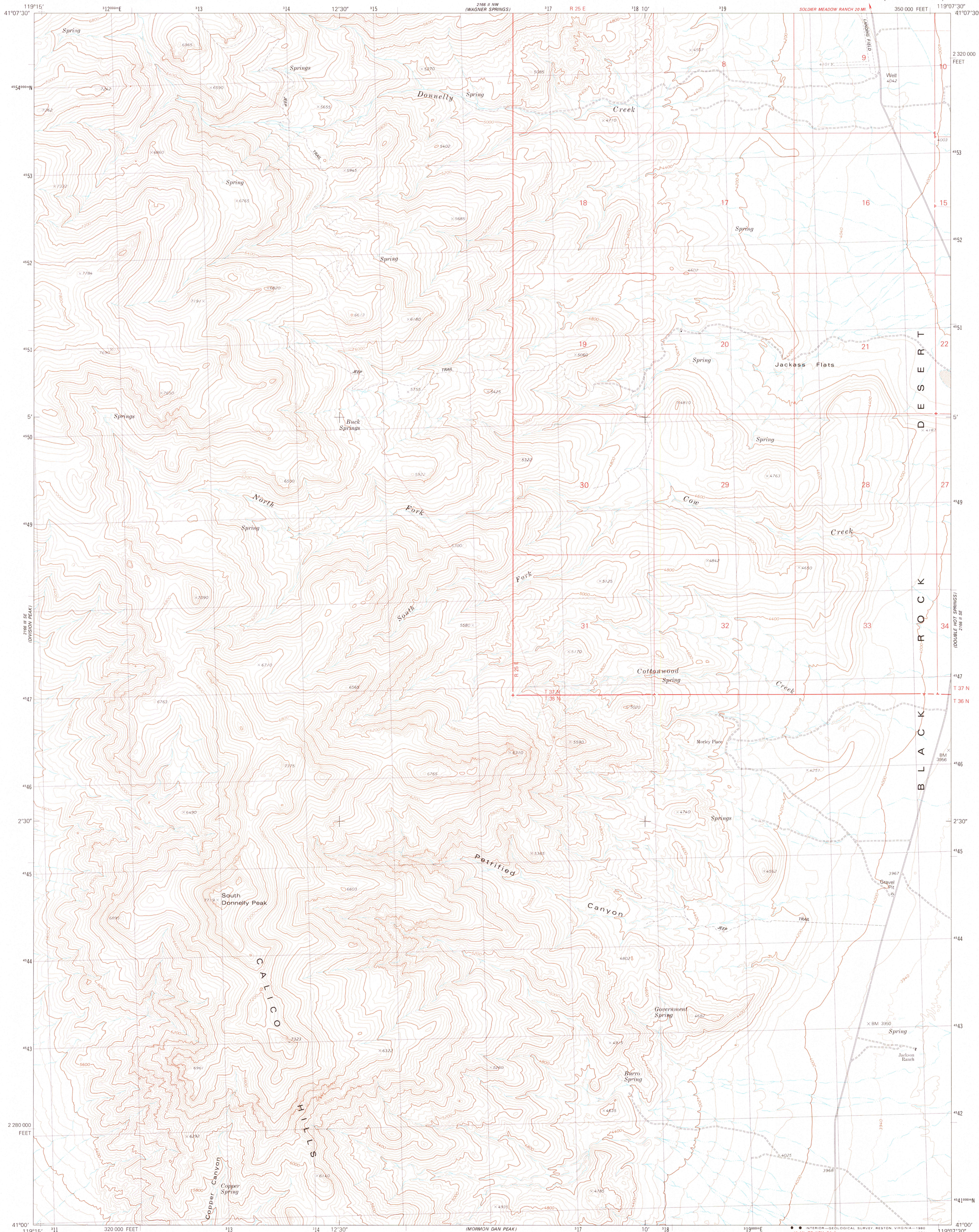


UNITED STATES  
DEPARTMENT OF THE INTERIOR  
GEOLOGICAL SURVEY

DONNELLY CREEK QUADRANGLE  
NEVADA—HUMBOLDT CO.  
7.5 MINUTE SERIES (TOPOGRAPHIC)



Mapped, edited, and published by the Geological Survey  
Control by USGS and NOS/NOAA

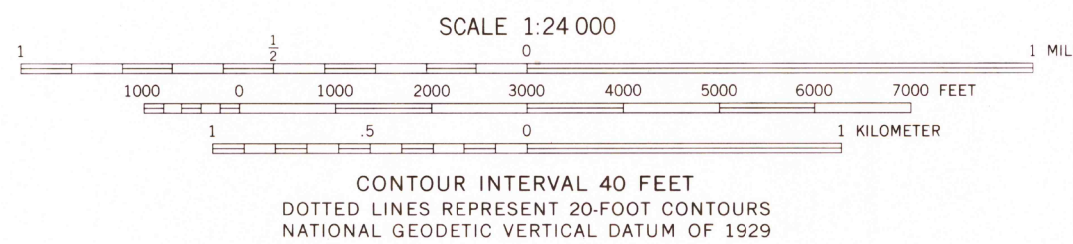
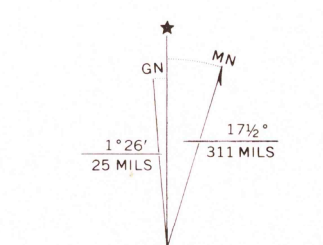
Topography by photogrammetric methods from aerial  
photographs taken 1972. Field checked 1975  
Map edited 1980

Projection and 10,000-foot grid ticks: Nevada coordinate  
system, west zone (transverse Mercator)  
1000-meter Universal Transverse Mercator grid, zone 11  
1927 North American Datum

To place on the predicted North American Datum 1983  
move the projection lines 15 meters north and  
85 meters east as shown by dashed corner ticks

Fine red dashed lines indicate selected fence and field lines where  
generally visible on aerial photographs. This information is unchecked

Where omitted, land lines have not been established  
or are not shown because of insufficient data



ROAD CLASSIFICATION	
Primary highway, hard surface	Light-duty road, hard or improved surface
Secondary highway, hard surface	Unimproved road
Interstate Route	U. S. Route
	State Route

DONNELLY CREEK, NEV.  
N4100—W11907.5/7.5

1980

DMA 2166 II SW—SERIES V896

RETURN TO:  
USGS AND HISTORICAL MAP ARCHIVES