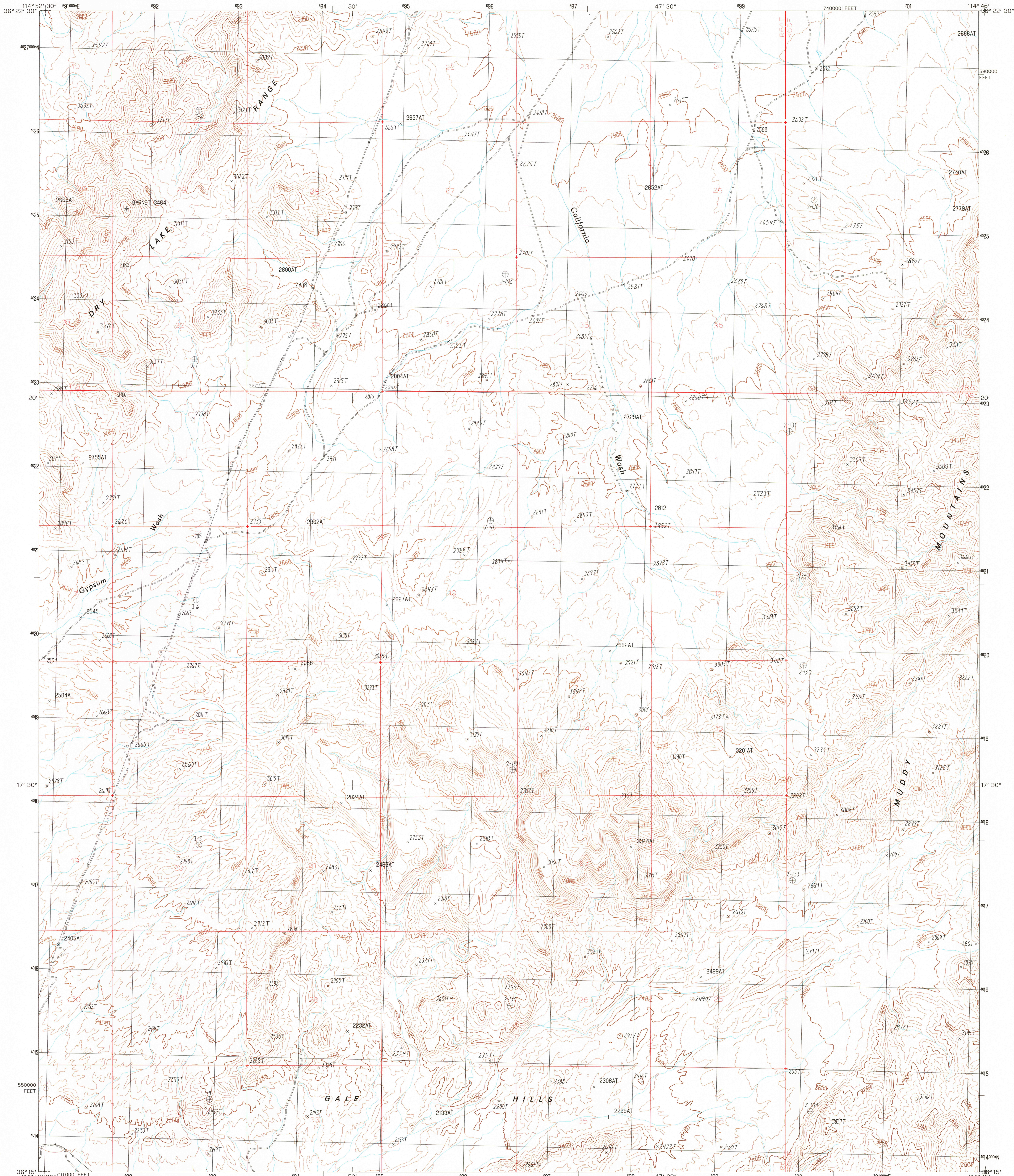


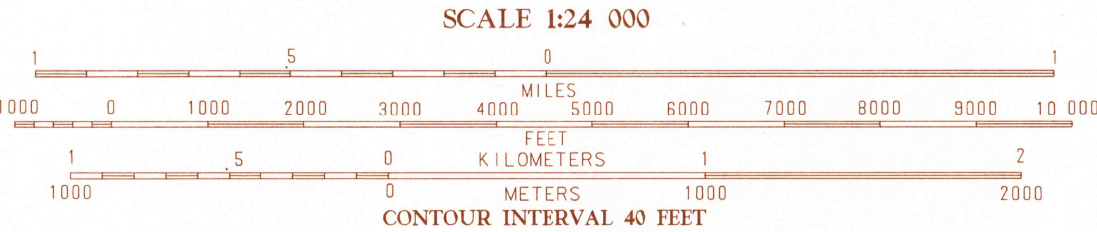
UNITED STATES  
DEPARTMENT OF THE INTERIOR  
GEOLOGICAL SURVEY

DRY LAKE SE QUADRANGLE  
NEVADA - CLARK CO.  
7.5 MINUTE SERIES (TOPOGRAPHIC)



PRODUCED BY THE UNITED STATES GEOLOGICAL SURVEY  
CONTROL BY: USGS, NOS/NOAA  
COMPILED FROM AERIAL PHOTOGRAPHS TAKEN: 1980  
FIELD CHECKED: 1982 MAP EDITED: 1986  
PROJECTION: TRANSVERSE MERCATOR  
GRID: 1000-METER UNIVERSAL TRANSVERSE MERCATOR ZONE 12  
1000-FOOT STATE GRID TICKS: NEVADA, EAST ZONE  
UTM GRID DECLINATION: 17° EAST  
1986 MAGNETIC NORTH DECLINATION: 14° EAST  
VERTICAL DATUM: NATIONAL GEODETIC VERTICAL DATUM OF 1929  
HORIZONTAL DATUM: 1927 NORTH AMERICAN DATUM  
To place on the predicted North American Datum of 1983,  
move the projection lines as shown by dashed corner ticks  
(5 meters north and 74 meters east)  
There may be private inholdings within the boundaries of any  
Federal and State Reservations shown on this map  
Where omitted, land lines have not been established  
All marginal data and lettering generated and positioned by  
automated type placement procedures

PROVISIONAL MAP  
Produced from original  
manuscript drawings. Infor-  
mation shown as of date of  
field check. 2



THIS MAP COMPLIES WITH NATIONAL MAP ACCURACY STANDARDS  
FOR SALE BY U.S. GEOLOGICAL SURVEY, DENVER, COLORADO 80225  
OR RESTON, VIRGINIA 22092

1	2	3	1 Dry Lake NW
4	5	2 Dry Lake	2 Dry Lake
6	7	3 Plain Point	3 Plain Point
		4 Apex	4 Apex
		5 Muddy Peak	5 Muddy Peak
		6 Frenchman Mtn	6 Frenchman Mtn
		7 Government Wash	7 Government Wash
		8 Calville Bay	8 Calville Bay

ADJOINING 7.5' QUADRANGLE NAMES

ROAD LEGEND  
Improved Road .....  
Unimproved Road .....  
Trail .....  
Interstate Route U.S. Route State Route

DRY LAKE SE, NEVADA  
PROVISIONAL EDITION 1986

36114-C7-TF-024

USGS NMHD HISTORICAL MAP  
MAR 28 1986  
REC'D FILE COPY