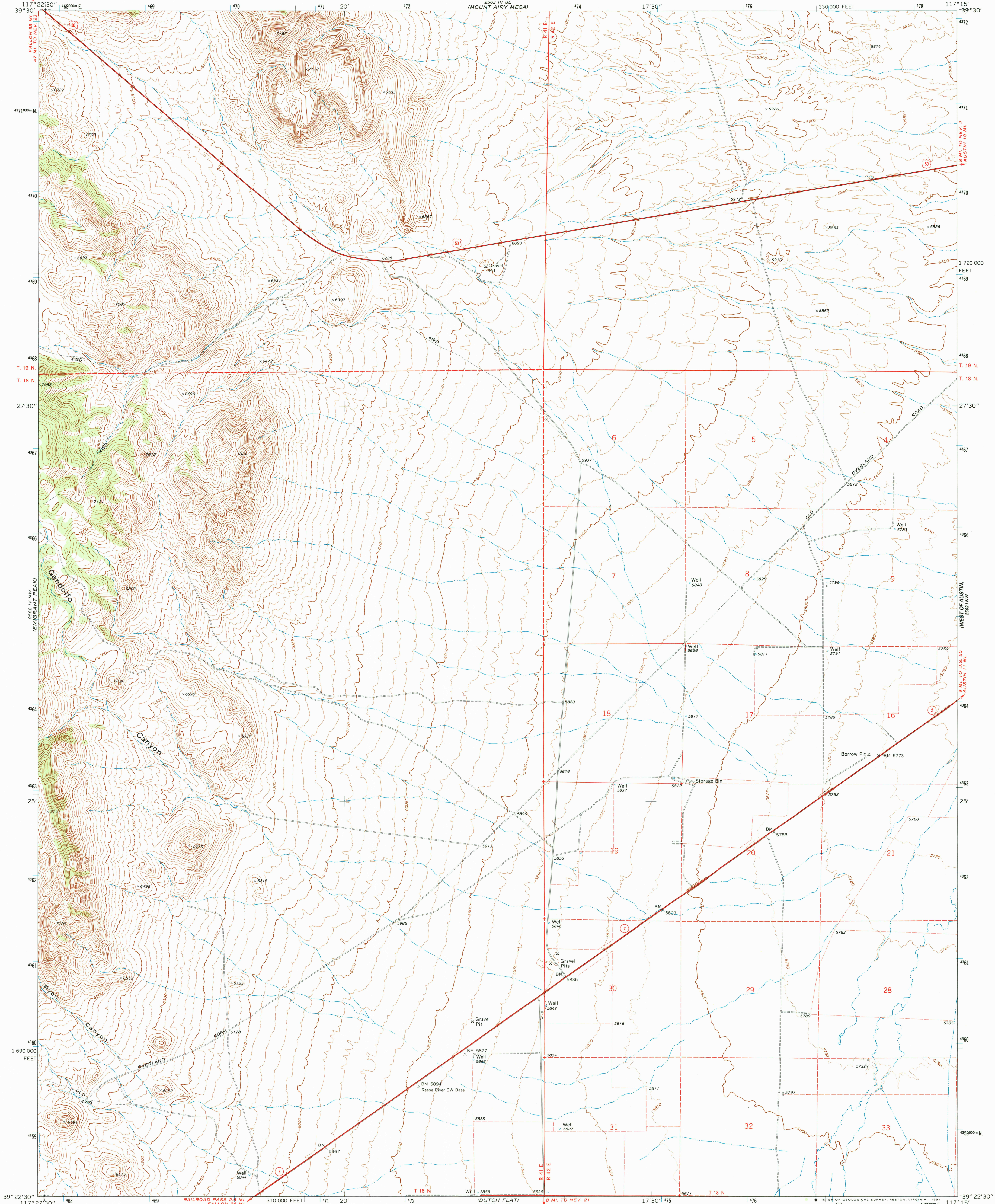


UNITED STATES  
DEPARTMENT OF THE INTERIOR  
GEOLOGICAL SURVEY

GANDOLFO CANYON QUADRANGLE  
NEVADA—LANDER CO.  
7.5 MINUTE SERIES (TOPOGRAPHIC)



Mapped, edited, and published by the Geological Survey

Control by USGS and NOS/NOAA

Topography by photogrammetric methods from aerial photographs taken 1967. Field checked 1969

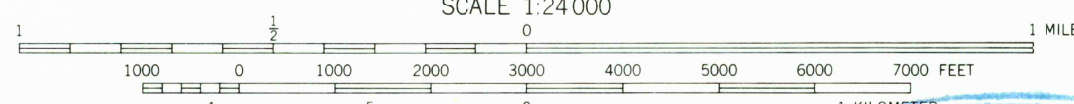
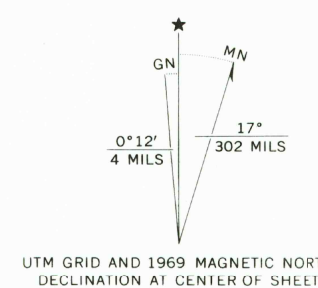
Polyconic projection. 1927 North American Datum 10,000-foot grid based on Nevada coordinate system, central zone

1000-meter Universal Transverse Mercator grid ticks, zone 11, shown in blue  
The difference between 1927 North American Datum and North American Datum of 1983 (NAD 83) for 7.5 minute intersections is given in USGS Bulletin 1875. The NAD 83 is shown by dashed corner ticks

Fine red dashed lines indicate selected fence lines

Where omitted, land lines have not been established or are not shown because of insufficient data

Map photoinspected 1980  
No major culture or drainage changes observed



CONTOUR INTERVAL 20 FEET  
DOTTED LINES REPRESENT 10-FOOT CONTOURS  
NATIONAL GEODETIC VERTICAL DATUM OF 1929

THIS MAP COMPLIES WITH NATIONAL MAP ACCURACY STANDARDS  
FOR SALE BY U.S. GEOLOGICAL SURVEY  
DENVER, COLORADO 80225, OR RESTON, VIRGINIA 22092  
A FOLDER DESCRIBING TOPOGRAPHIC MAPS AND SYMBOLS IS AVAILABLE ON REQUEST

USGS NMD HISTORICAL MAP  
MAY 30 1991  
REC'D FILE COPY



QUADRANGLE LOCATION

ROAD CLASSIFICATION  
Primary highway, all weather, hard surface  
Light-duty road, all weather, improved surface  
Unimproved road, fair or dry weather  
U. S. Route  
State Route

GANDOLFO CANYON, NEV.  
39117-D3-TF-024

1969  
PHOTOINSPECTED 1980  
DMA 2562 IV NE—SERIES V896