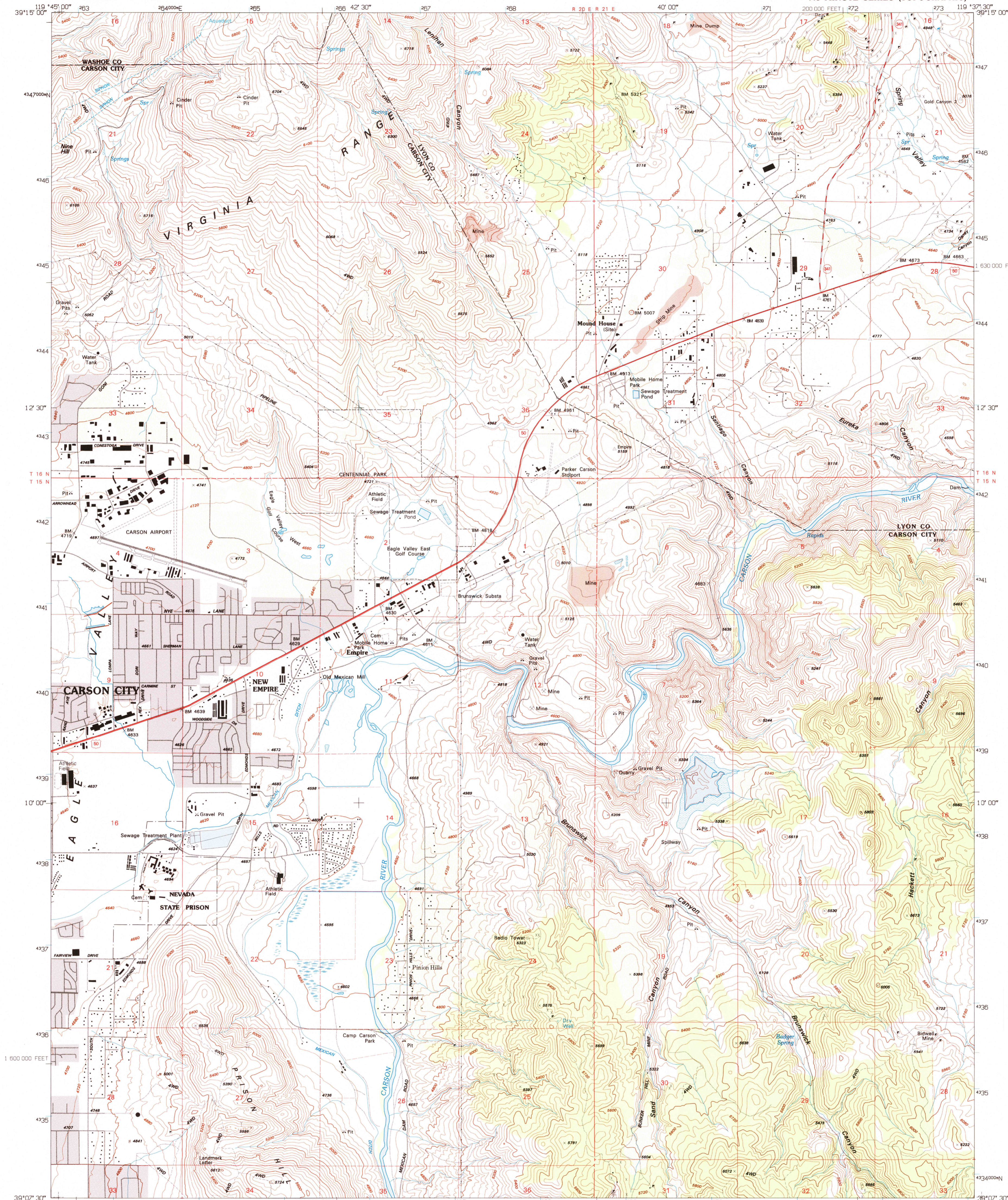
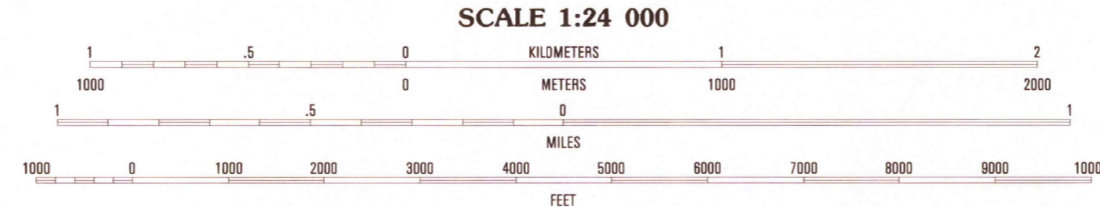
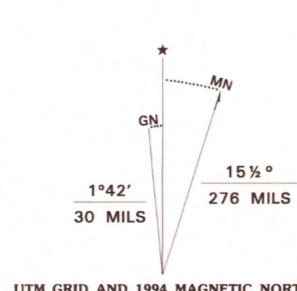


UNITED STATES
DEPARTMENT OF THE INTERIOR
GEOLOGICAL SURVEY

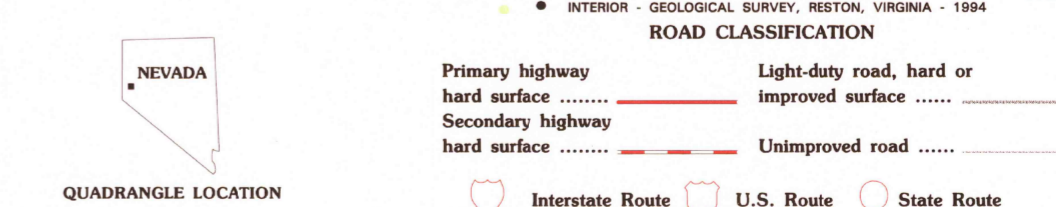
NEW EMPIRE QUADRANGLE
NEVADA
7.5 MINUTE SERIES (TOPOGRAPHIC)



Produced by the United States Geological Survey
Control by USGS and NOS/NOAA
Compiled from aerial photographs taken 1967. Field checked 1968
Revised from aerial photographs taken 1990 and other sources
Map edited 1994. Contours and land elevations have not been
revised and may conflict with other content
North American Datum of 1927 (NAD 27). Projection and
blue 1000-meter ticks: Universal Transverse Mercator, zone 11
10 000-foot ticks: Nevada Coordinate System, west zone
North American Datum of 1983 (NAD 83) is shown by dashed
corner ticks. The values of the shift between NAD 27 and NAD 83
for 7.5-minute intersections are obtainable from National Geographic
Survey NADCON software
There may be private inholdings within the boundaries of the
National or State reservations shown on this map
Fine red dashed lines indicate selected fence and field lines where
generally visible on aerial photographs. This information is unchecked



THIS MAP COMPLIES WITH NATIONAL MAP ACCURACY STANDARDS
FOR SALE BY U.S. GEOLOGICAL SURVEY
DENVER, COLORADO 80225, OR RESTON, VIRGINIA 22092
A FOLDER DESCRIBING TOPOGRAPHIC MAPS AND SYMBOLS IS AVAILABLE ON REQUEST



QUADRANGLE LOCATION			
1	2	3	1 Washoe City
4	5	6	2 Virginia City
7	8	9	3 Flowerly Peak
10	11	12	4 Carson City
13	14	15	5 Dayton
16	17	18	6 Genoa
19	20	21	7 McTearahan Hill
22	23	24	8 Mineral Peak

NEW EMPIRE, NV.
39119-B6-TF-024
1994

DMA 2062 II NW-SERIES V896

