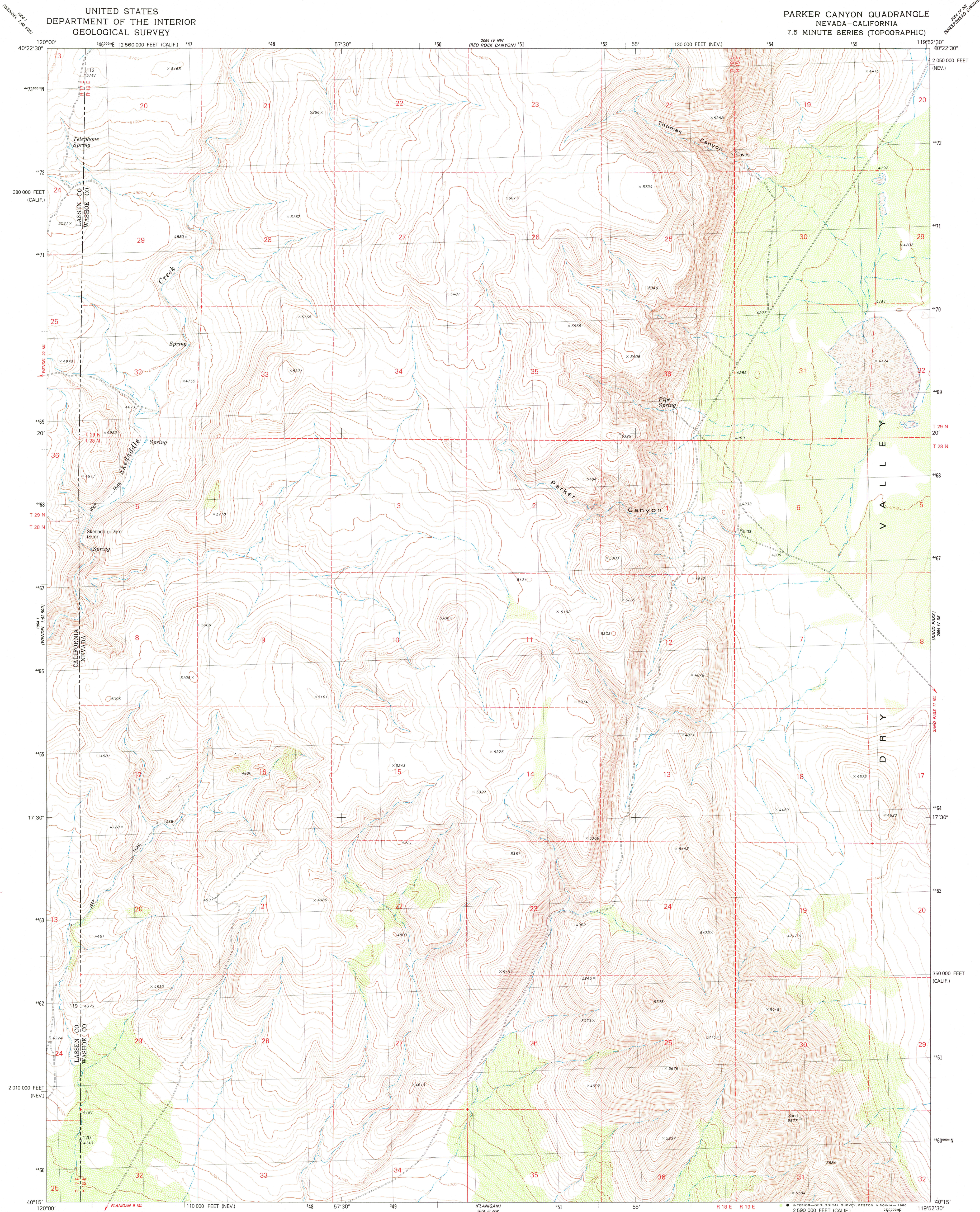


UNITED STATES  
DEPARTMENT OF THE INTERIOR  
GEOLOGICAL SURVEY

PARKER CANYON QUADRANGLE  
NEVADA-CALIFORNIA  
7.5 MINUTE SERIES (TOPOGRAPHIC)



Mapped, edited, and published by the Geological Survey

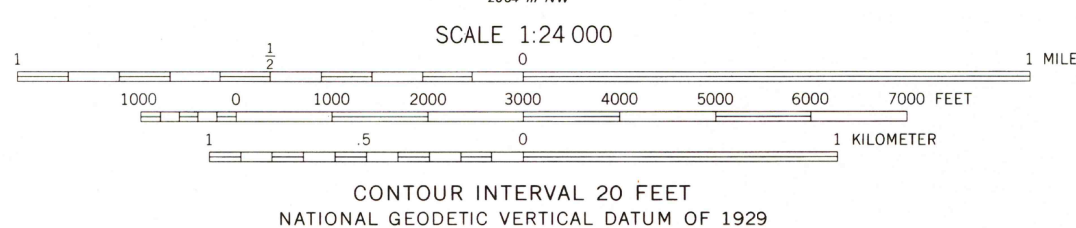
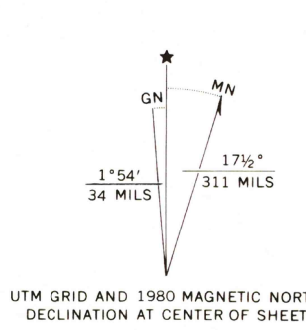
Control by USGS and NOS/NOAA

Topography by photogrammetric methods from aerial  
photographs taken 1974. Field checked 1975

Map edited 1980

Projection: Nevada coordinate system, west zone  
(transverse Mercator)  
10,000-foot grid ticks based on Nevada coordinate system,  
west zone and California coordinate system, zone 1  
1000-meter Universal Transverse Mercator grid, zone 11  
1927 North American Datum

To place on the predicted North American Datum 1983  
move the projection lines 15 meters north and  
87 meters east as shown by dashed corner ticks  
Where omitted, land lines have not been established



THIS MAP COMPLIES WITH NATIONAL MAP ACCURACY STANDARDS  
FOR SALE BY U. S. GEOLOGICAL SURVEY, DENVER, COLORADO 80225, OR RESTON, VIRGINIA 22092  
A FOLDER DESCRIBING TOPOGRAPHIC MAPS AND SYMBOLS IS AVAILABLE ON REQUEST



ROAD CLASSIFICATION	
Primary highway, hard surface	Light-duty road, hard or improved surface
Secondary highway, hard surface	Unimproved road
Interstate Route	U. S. Route
	State Route

PARKER CANYON, NEV.-CALIF.  
N4015-W11952.5/7.5

USGS  
Historical File  
Topographic Division

1980  
DMA 2065 IV SW-SERIES V896

USGS Library  
Reston, VA.  
Topo Archive

SEP 30 1980