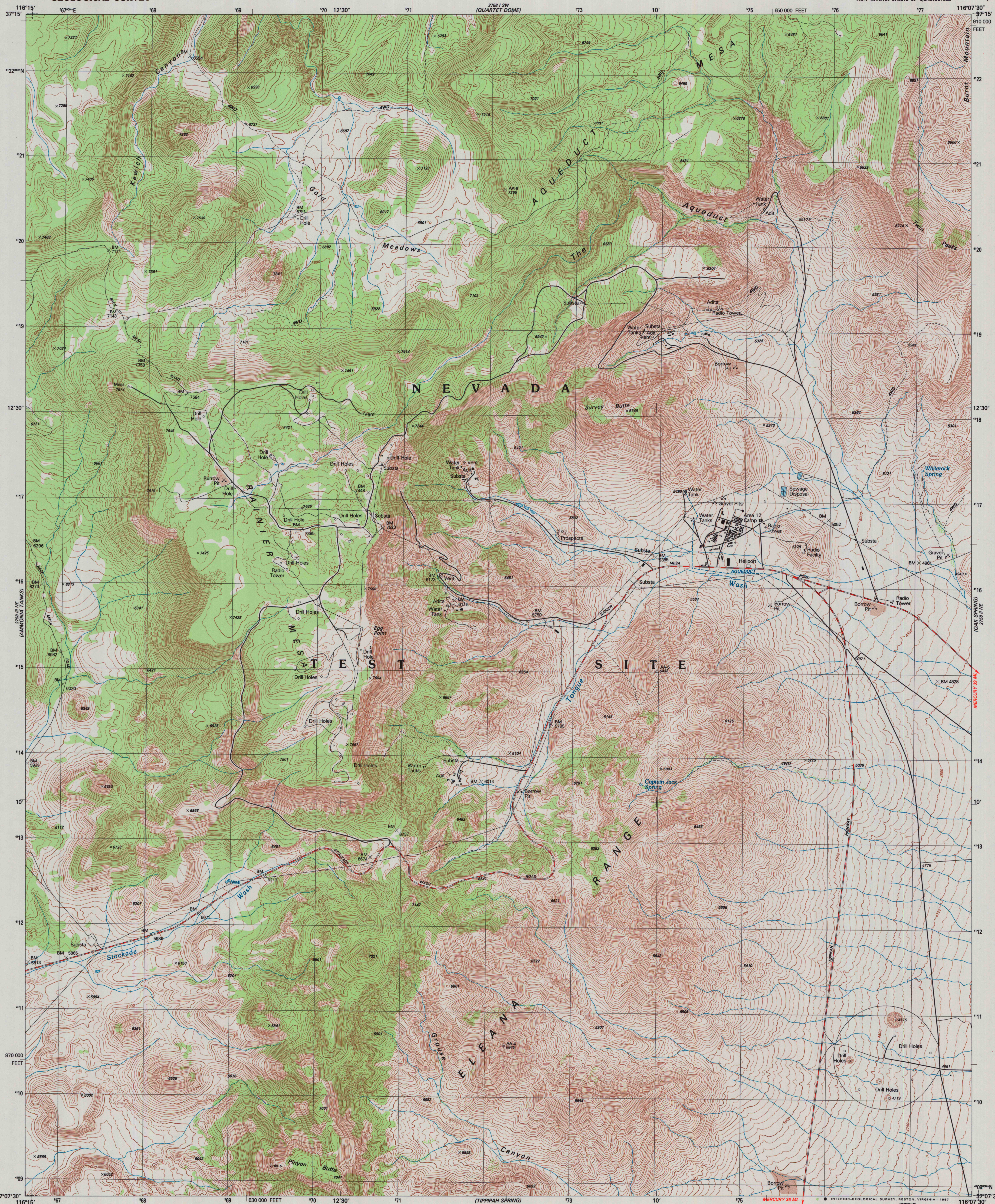
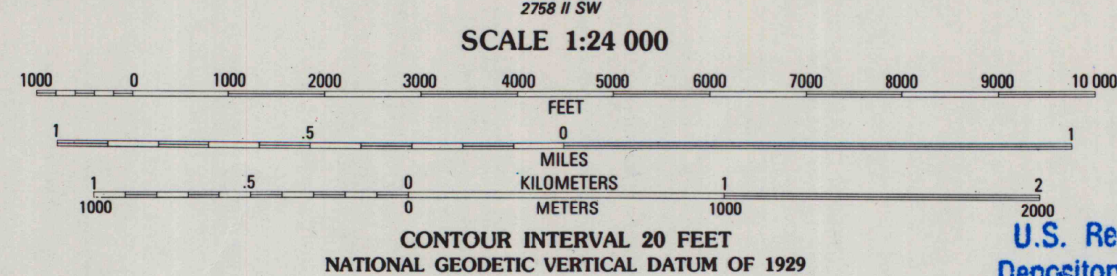
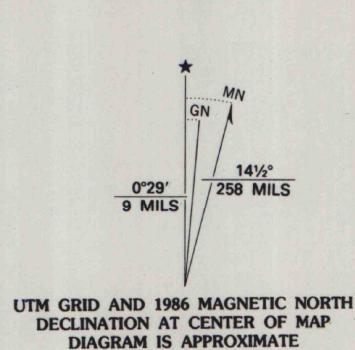


UNITED STATES
DEPARTMENT OF THE INTERIOR
GEOLOGICAL SURVEY

RAINIER MESA QUADRANGLE
NEVADA-NVE CO.
7.5 MINUTE SERIES (TOPOGRAPHIC)
NW/4 TIPPICAH SPRING 15' QUADRANGLE

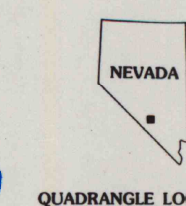


Produced by the United States Geological Survey
Control by USGS, NOS/NOAA and Department of Energy
Compiled by photogrammetric methods from aerial photographs
taken 1983. Field checked 1984. Map edited 1986
Projection and 10,000-foot grid ticks: Nevada coordinate
system, central zone (transverse Mercator)
1000-meter Universal Transverse Mercator grid, zone 11
1927 North American Datum
To place on the predicted North American Datum 1983
move the projection lines 9 meters north and
78 meters east as shown by dashed corner ticks
Land lines have not been established in this area
There may be private inholdings within the boundaries of
the National or State reservations shown on this map



THIS MAP COMPLIES WITH NATIONAL MAP ACCURACY STANDARDS
FOR SALE BY U. S. GEOLOGICAL SURVEY, DENVER, COLORADO 80225, OR RESTON, VIRGINIA 22092
A FOLDER DESCRIBING TOPOGRAPHIC MAPS AND SYMBOLS IS AVAILABLE ON REQUEST

U.S. Regional
Depository Copy
DO NOT DISCARD



ROAD CLASSIFICATION
Primary highway, hard surface Light-duty road, hard or improved surface
Secondary highway, hard surface Unimproved road
Interstate Route U. S. Route State Route

A.H. ROBINSON
MAP LIBRARY
AUG 1 0 1937
University of Wisconsin
Madison

RAINIER MESA, NEV.
NW/4 TIPPICAH SPRING 15' QUADRANGLE
37116-B2-TF-024
1986
DMA 2758 II NW-SERIES V896