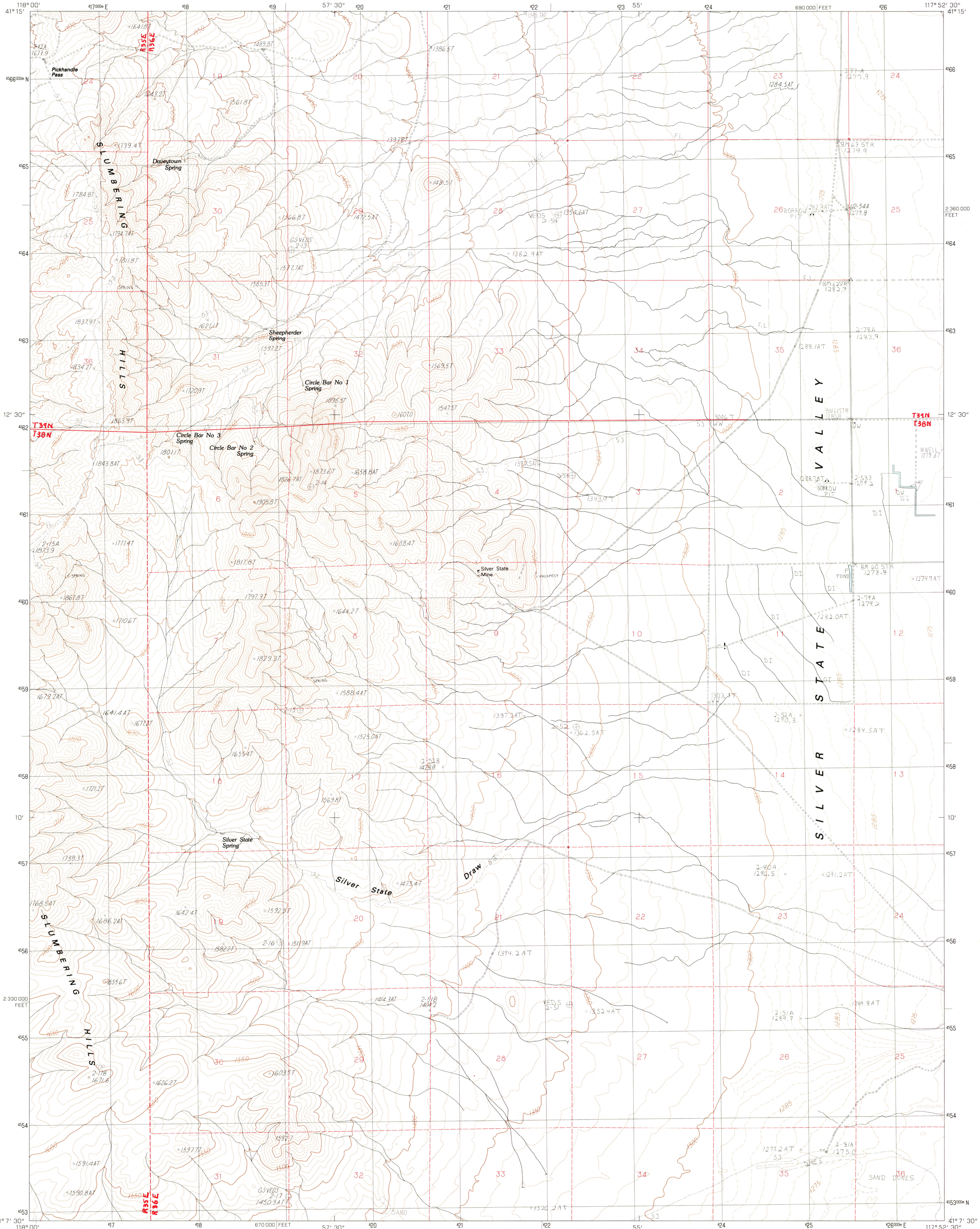


UNITED STATES  
DEPARTMENT OF THE INTERIOR  
GEOLOGICAL SURVEY

SILVER STATE DRAW QUADRANGLE  
NEVADA—HUMBOLDT CO.  
7.5 MINUTE SERIES (TOPOGRAPHIC)



PRODUCED BY THE UNITED STATES GEOLOGICAL SURVEY  
CONTROL BY ..... USGS, NOS/NOAA  
COMPILED FROM AERIAL PHOTOGRAPHS TAKEN ..... 1976  
FIELD CHECKED ..... 1977 MAP EDITED ..... 1982  
PROJECTION ..... UNIVERSAL TRANSVERSE MERCATOR  
GRID 1000-METER UNIVERSAL TRANSVERSE MERCATOR ..... ZONE 11  
UTM GRID DECLINATION ..... NEVADA, WEST ZONE  
10,000-FOOT STATE GRID TICKS ..... 17 EAST  
1980 MAGNETIC NORTH DECLINATION ..... 0987  
VERTICAL DATUM ..... NATIONAL GEODETIC VERTICAL DATUM OF 1929  
HORIZONTAL DATUM ..... 1927 NORTH AMERICAN DATUM  
To place on the predicted North American Datum of 1983,  
move the projection lines as shown by dashed corner ticks  
(14 meters north/81 meters east)  
There may be private inholdings within the boundaries of any  
Federal and State Reservations shown on this map  
Certain land lines are omitted because of insufficient data

**PROVISIONAL MAP**  
Produced from original  
manuscript drawings. Information  
shown as of date of  
field check

SCALE 1:24 000  
1 5 0 5 10 15 20 25 30 35 40 45 50 55 60 65 70 75 80 85 90 95 100  
KILOMETERS  
1 5 10 15 20 25 30 35 40 45 50 55 60 65 70 75 80 85 90 95 100  
METERS  
1 5 10 15 20 25 30 35 40 45 50 55 60 65 70 75 80 85 90 95 100  
MILES  
1000 0 1000 2000 3000 4000 5000 6000 7000 8000 9000 10 000  
FEET  
CONTOUR INTERVAL 10 METERS  
SUPPLEMENTARY CONTOUR INTERVAL 2.5 METERS  
ELEVATIONS SHOWN TO THE NEAREST 0.1 METER  
To convert meters to feet multiply by 3.2808  
To convert feet to meters multiply by 0.3048  
THIS MAP COMPLIES WITH NATIONAL MAP ACCURACY STANDARDS  
FOR SALE BY U.S. GEOLOGICAL SURVEY, DENVER, COLORADO 80225, OR RESTON, VIRGINIA 22092

ROAD LEGEND  
Improved Road .....  
Unimproved Road .....  
Trail .....  
Interstate Route ..... U.S. Route ..... State Route .....  
QUADRANGLE LOCATION  
NEVADA  
ADJOINING 7.5 QUADRANGLE NAMES  
1 2 3 1 Jackson Well  
2 Awakening Peak  
3 Mud Spring Canyon  
4 Sombra Peak  
5 Bloody Run Peak  
6 Mormon Dan Butte  
7 Barrett Springs  
8 Winnemucca Mtn  
SILVER STATE DRAW, NEVADA  
PROVISIONAL EDITION 1982  
41117-B8-TM-024

DEC 03 1982  
RETURN TO:  
USGS MMD HISTORICAL MAP ARCHIVES  
1950