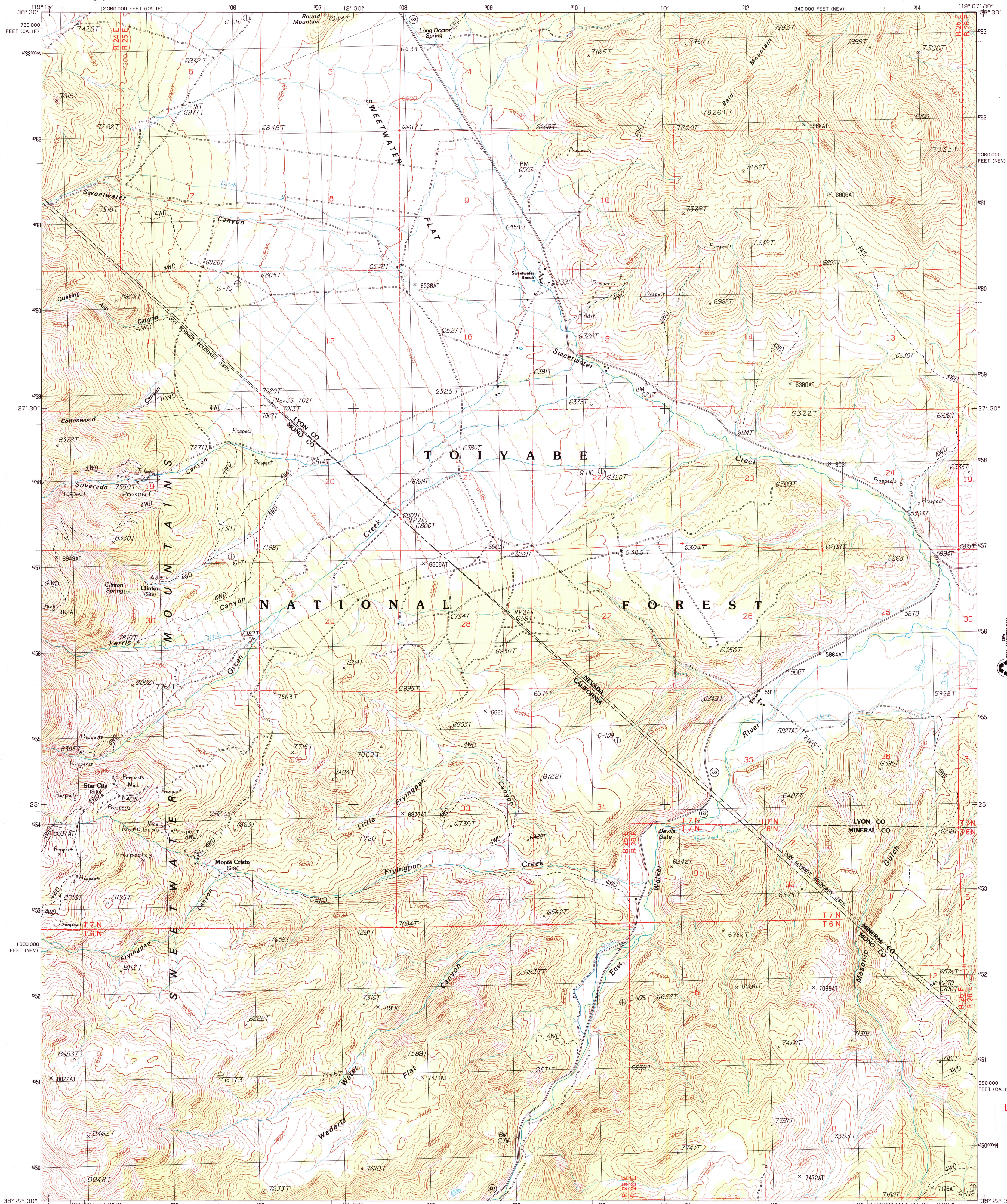




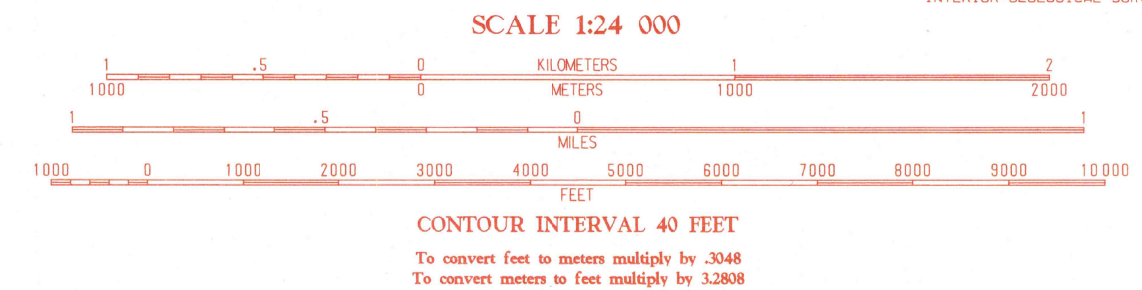
U.S. DEPARTMENT OF THE INTERIOR
U.S. GEOLOGICAL SURVEY

SWEETWATER CREEK QUADRANGLE
NEVADA-CALIFORNIA
7.5 MINUTE SERIES (TOPOGRAPHIC)



PRODUCED BY THE UNITED STATES GEOLOGICAL SURVEY
CONTROL BY ... USGS, NOS/NOAA
COMPILED FROM AERIAL PHOTOGRAPHS TAKEN ... 1982
FIELD CHECKED ... 1985 MAP EDITED ... 1989
PROJECTION ... TRANSVERSE MERCATOR
GRID 1000-METER UNIVERSAL TRANSVERSE MERCATOR ZONE II
10000-FOOT STATE GRID TICKS ... NEVADA, WEST ZONE
CALIFORNIA, ZONE 3
UTM GRID DECLINATION ... 1°22' WEST
1989 MAGNETIC NORTH DECLINATION ... 15° EAST
VERTICAL DATUM ... NATIONAL GEODETIC VERTICAL DATUM OF 1929
HORIZONTAL DATUM ... 1927 NORTH AMERICAN DATUM
To place on the predicted North American Datum of 1983,
move the projection lines as shown by dashed corner ticks
(12 meters north and 85 meters east)
There may be private inholdings within the boundaries of any
Federal and State Reservations shown on this map
No distinction made between houses, barns, and other buildings
Where omitted, land lines have not been established or are
not shown because of insufficient data

PROVISIONAL MAP
Produced from original
manuscript drawings. Infor-
mation shown as of date of
photography.



SCALE 1:24 000
CONTOUR INTERVAL 40 FEET
To convert feet to meters multiply by .3048
To convert meters to feet multiply by 3.2808

THIS MAP COMPLIES WITH NATIONAL MAP ACCURACY STANDARDS
FOR SALE BY U.S. GEOLOGICAL SURVEY
P.O. BOX 25586, DENVER, COLORADO 80225
A FOLDER DESCRIBING TOPOGRAPHIC MAPS AND SYMBOLS IS AVAILABLE ON REQUEST

1	2	3	1	Desert Creek Peak
4	5	6	2	Nye Canyon
7	8	9	3	Wichman Canyon
			4	Mount Patterson
			5	The Elbow
			6	Mount Jackson
			7	Bridgeport
			8	Dome Hill

ROAD LEGEND
Improved Road
Unimproved Road
Trail
Interstate Route
U.S. Route
State Route

SWEETWATER CREEK, NEV.-CALIF.
PROVISIONAL EDITION 1989

38119-D2-TF-024
MAY 26 2005

USGS Library
Reston, VA.
Topo Archive

