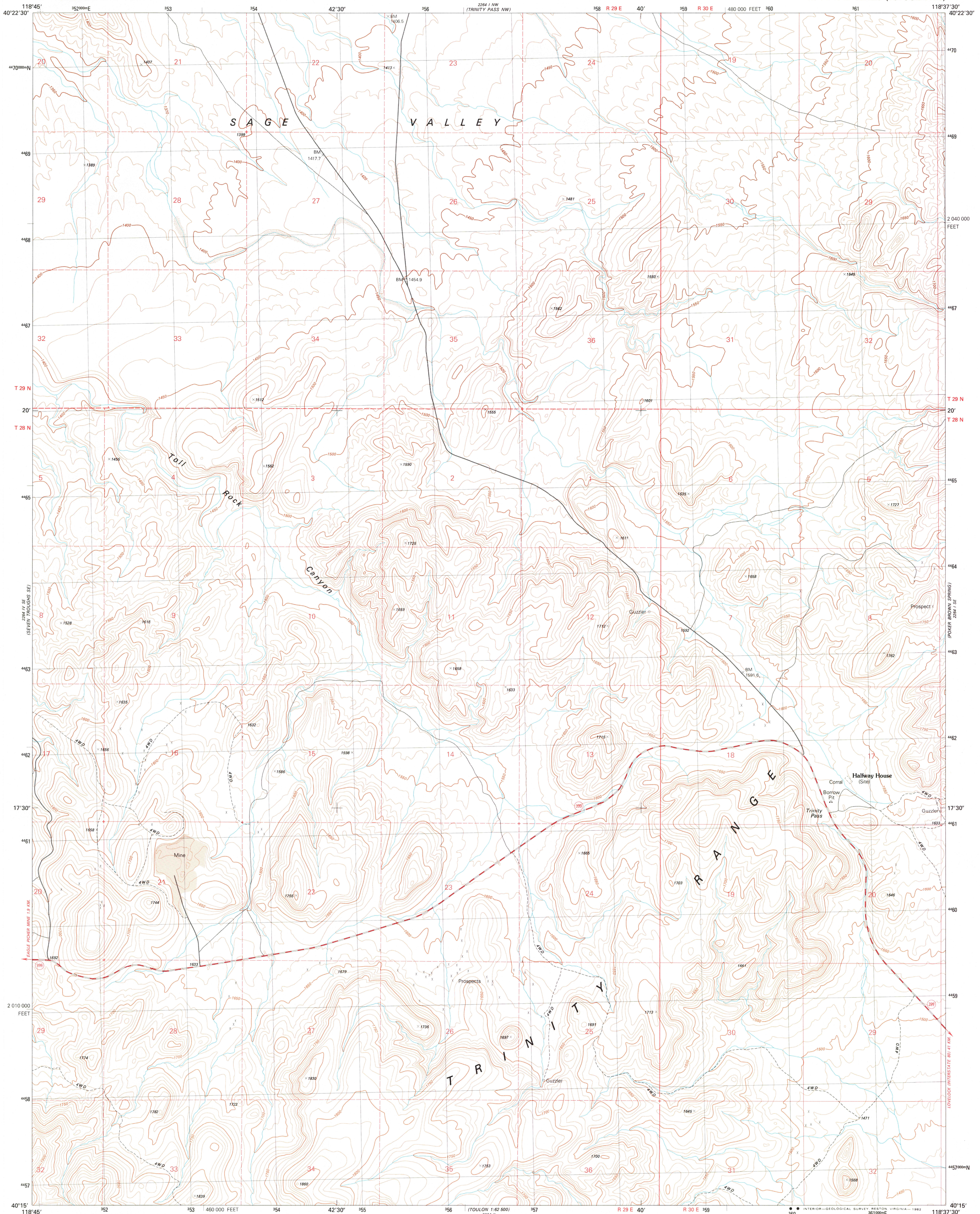
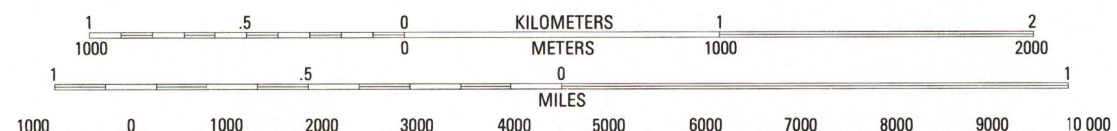
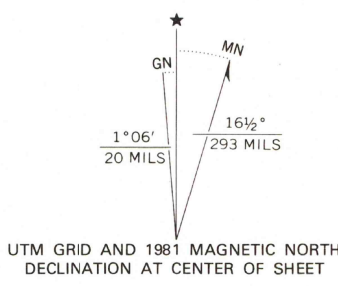


UNITED STATES
DEPARTMENT OF THE INTERIOR
GEOLOGICAL SURVEY

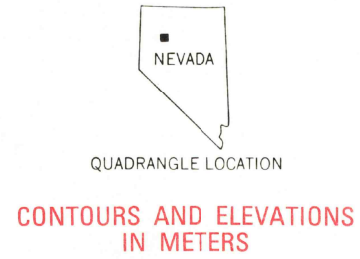
TRINITY PASS QUADRANGLE
NEVADA-PERSHING CO.
7.5 MINUTE SERIES (TOPOGRAPHIC)



Produced by the United States Geological Survey
Control by USGS and NOS/NOAA
Compiled by photogrammetric methods from aerial
photographs taken 1974. Field checked 1975
Map edited 1981
Projection and 1000-meter grid, zone 11,
Universal Transverse Mercator
10,000-foot grid ticks based on Nevada coordinate
system, west zone. 1927 North American Datum
To place on the predicted North American Datum 1983
move the projection lines 14 meters north and
84 meters east as shown by dashed corner ticks



CONTOUR INTERVAL 10 METERS
NATIONAL GEODETIC DATUM OF 1929
CONTROL ELEVATIONS SHOWN TO THE NEAREST 0.1 METER
OTHER ELEVATIONS SHOWN TO THE NEAREST METER
TO CONVERT FEET TO METERS MULTIPLY BY 3048
TO CONVERT METERS TO FEET MULTIPLY BY 3.2808
THIS MAP COMPLIES WITH NATIONAL MAP ACCURACY STANDARDS
FOR SALE BY U. S. GEOLOGICAL SURVEY, DENVER, COLORADO 80225, OR RESTON, VIRGINIA 22092
A FOLDER DESCRIBING TOPOGRAPHIC MAPS AND SYMBOLS IS AVAILABLE ON REQUEST



ROAD CLASSIFICATION
Primary highway, hard surface
Secondary highway, hard surface
Unimproved road
Interstate Route U. S. Route State Route

TRINITY PASS, NEV.
N4015-W11837.5/7.5
1981
DMA 2264 1 SW-SERIES V896

JAN 1 1982
RETURN TO:
USGS AND HISTORICAL MAP ARCHIVES
1982