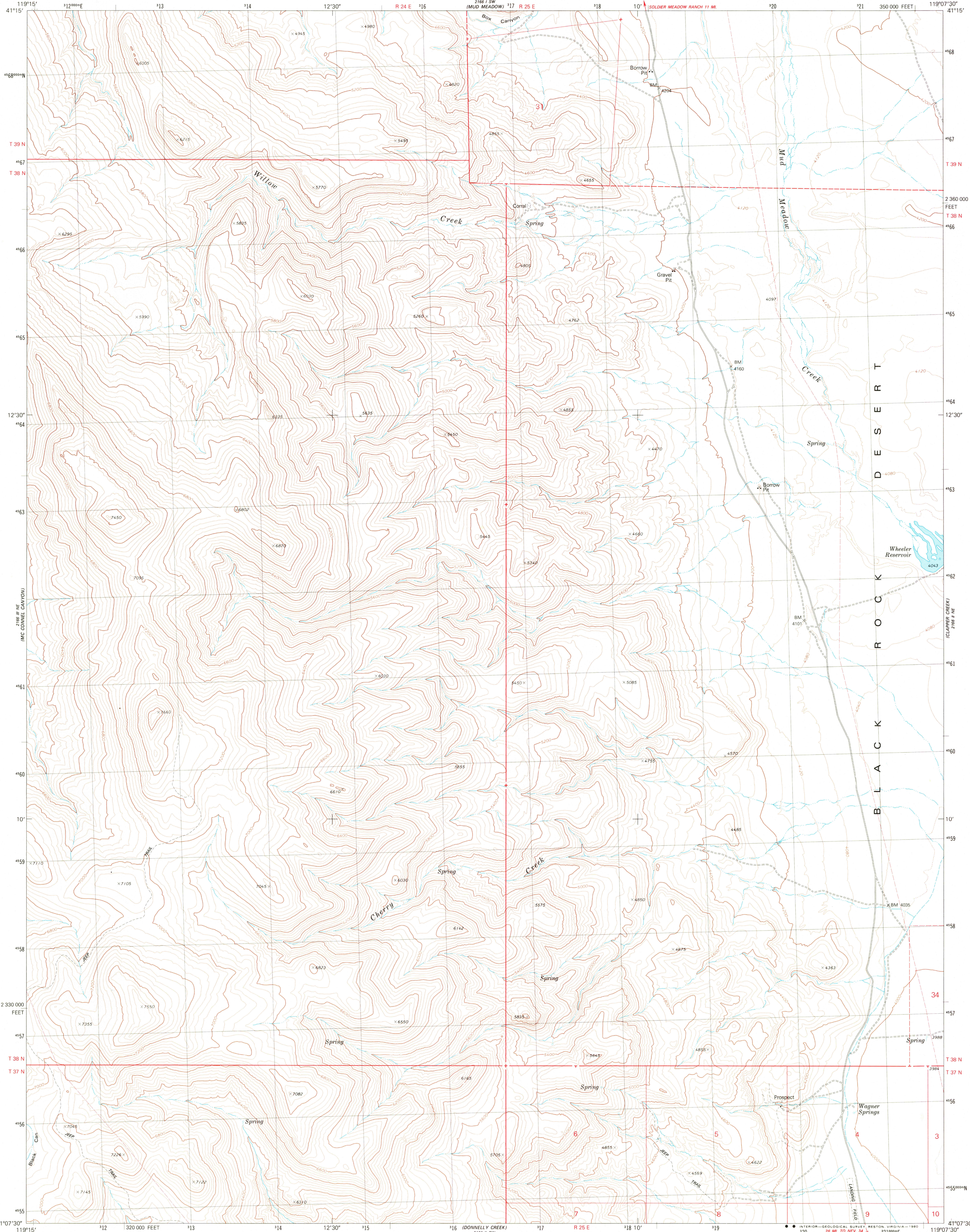
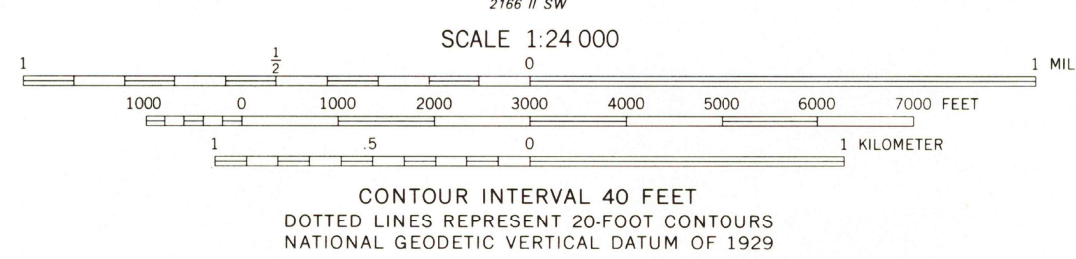
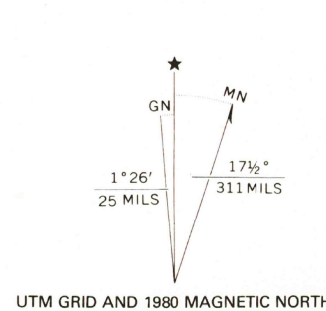


UNITED STATES
DEPARTMENT OF THE INTERIOR
GEOLOGICAL SURVEY

WAGNER SPRINGS QUADRANGLE
NEVADA—HUMBOLDT CO.
7.5 MINUTE SERIES (TOPOGRAPHIC)



Mapped, edited, and published by the Geological Survey
Control by USGS and NOS/NOAA
Topography by photogrammetric methods from aerial
photographs taken 1972. Field checked 1975
Map edited 1980
Projection and 10,000-foot grid ticks: Nevada coordinate
system, west zone (transverse Mercator)
1000-meter Universal Transverse Mercator grid, zone 11
1927 North American Datum
To place on the predicted North American Datum 1983
move the projection lines 15 meters north and
85 meters east as shown by dashed corner ticks
Fine red dashed lines indicate selected fence and field lines where
generally visible on aerial photographs. This information is unchecked
Where omitted, land lines have not been established
or are not shown because of insufficient data



ROAD CLASSIFICATION
Primary highway, hard surface
Secondary highway, hard surface
Unimproved road
Interstate Route
U. S. Route
State Route
Light-duty road, hard or improved surface
Unimproved road
Interstate Route
U. S. Route
State Route
USGS
Historical File
Topographic Division
WAGNER SPRINGS, NEV.
N4107.5-W11907.5/7.5
1980
DMA 2166 II NW—SERIES V896

AUG 19 1980