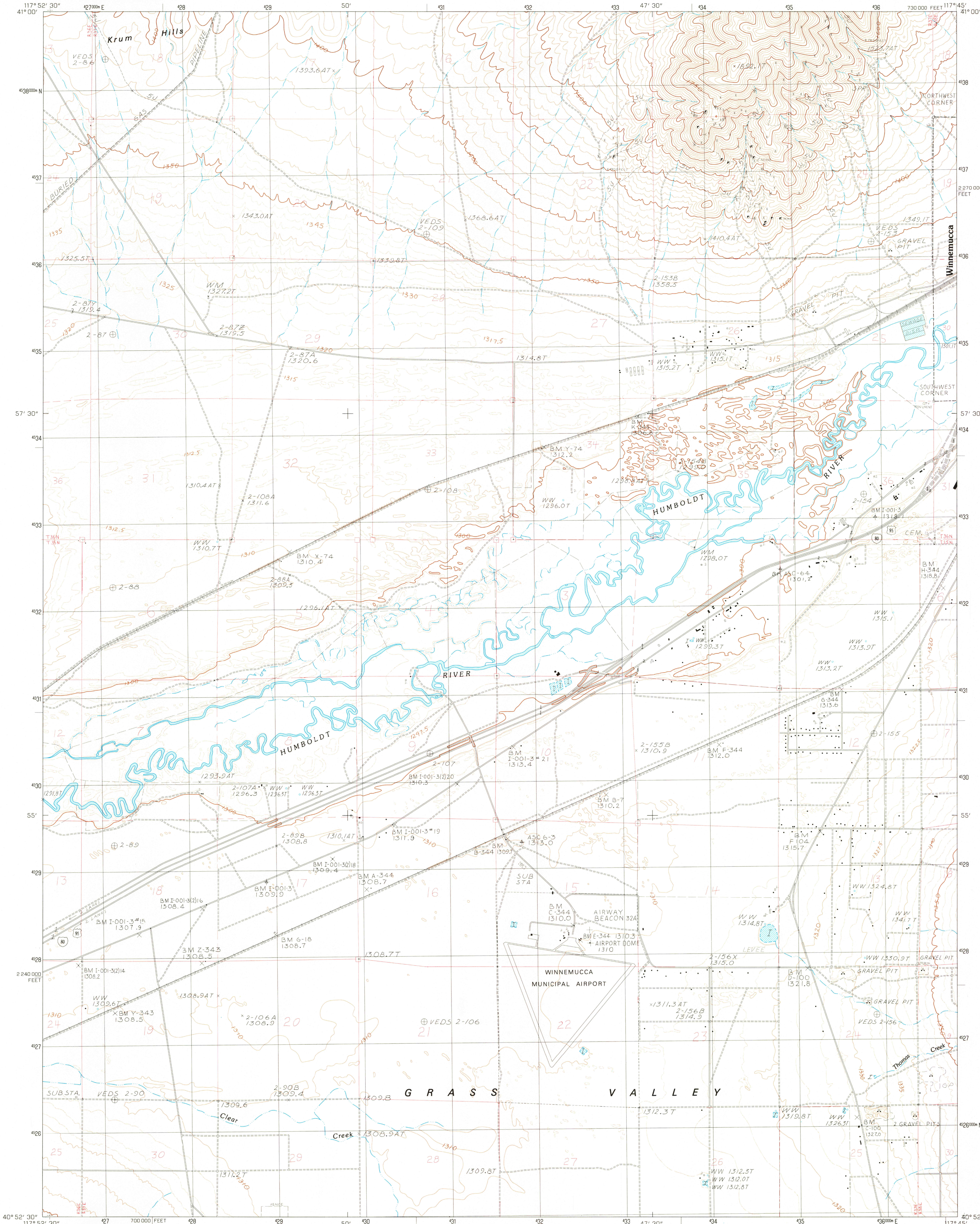


UNITED STATES
DEPARTMENT OF THE INTERIOR
GEOLOGICAL SURVEY

WINNEMUCCA WEST QUADRANGLE
NEVADA-HUMBOLDT CO.
7.5 MINUTE SERIES (TOPOGRAPHIC)



PRODUCED BY THE UNITED STATES GEOLOGICAL SURVEY
CONTROL BY.....USGS,NOS/NOAA
COMPILED FROM AERIAL PHOTOGRAPHS TAKEN.....1976
FIELD CHECKED.....1977. MAP EDITED.....1982
PROJECTION.....UNIVERSAL TRANSVERSE MERCATOR
GRID:1000-METER UNIVERSAL TRANSVERSE MERCATOR
10,000-FOOT STATE GRID TICKS.....NEVADA, WEST ZONE
UTM GRID DECLINATION.....0°32' WEST
1980 MAGNETIC NORTH DECLINATION.....17° EAST
VERTICAL DATUM.....NATIONAL GEODETIC VERTICAL DATUM OF 1929
HORIZONTAL DATUM.....1927 NORTH AMERICAN DATUM
To place on the predicted North American Datum of 1983,
move the projection lines as shown by dashed corner ticks
(14 meters north/81 meters east)
There may be private inholdings within the boundaries of any
Federal and State Reservations shown on this map

PROVISIONAL MAP
Produced from original
manuscript drawings. Infor-
mation shown as of date of
field check.

SCALE 1:24 000
1 5 0 5 10 KILOMETERS
1 5 0 5 10 METERS
1 5 0 5 10 MILES
1000 0 1000 2000 3000 4000 5000 6000 7000 8000 9000 10 000 FEET
CONTOUR INTERVAL 10 METERS
SUPPLEMENTARY CONTOUR INTERVAL 2.5 METERS
ELEVATIONS SHOWN TO THE NEAREST 0.1 METER
To convert meters to feet multiply by 3.2808
To convert feet to meters multiply by 0.3048
THIS MAP COMPLIES WITH NATIONAL MAP ACCURACY STANDARDS
FOR SALE BY U.S. GEOLOGICAL SURVEY, DENVER, COLORADO 80225, OR RESTON, VIRGINIA 22092

1	2	3	1	Barrett Springs
2	3	4	2	Winnemucca Min.
3	4	5	3	Winnemucca East
4	5	6	4	Dun Glen Peak
5	6	7	5	Rose Creek Mtn
6	7	8	6	Sonoma Canyon

ROAD LEGEND
Improved Road
Unimproved Road
Trail
Interstate Route U.S. Route State Route
QUADRANGLE LOCATION
NEVADA
ADJOINING 7.5 QUADRANGLE NAMES
WINNEMUCCA WEST, NEVADA
PROVISIONAL EDITION 1982
40117-H7-TM-024

MAR 20 1983
RETURN TO:
USGS AND HISTORICAL MAP ARCHIVES
2100