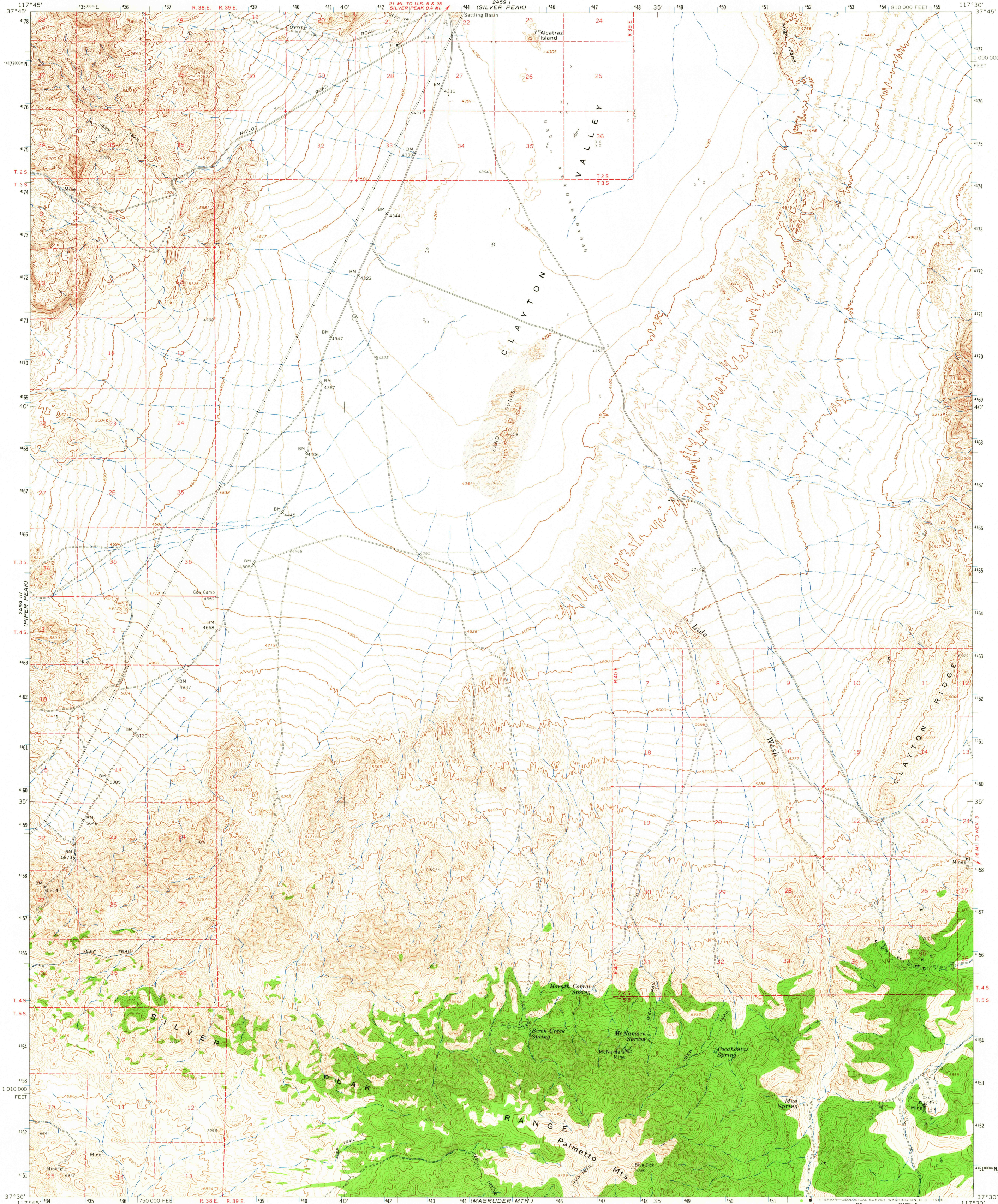


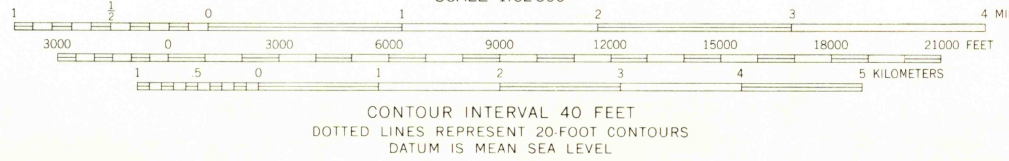
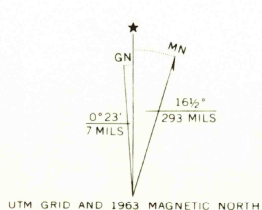
(RHYOLITE RIDGE)
2459 II
SILVER PEAK

UNITED STATES
DEPARTMENT OF THE INTERIOR
GEOLOGICAL SURVEY

LIDA WASH QUADRANGLE
NEVADA—ESMERALDA CO.
15 MINUTE SERIES (TOPOGRAPHIC)



Mapped, edited, and published by the Geological Survey
Control by USGS and USC&GS
Topography by photogrammetric methods from aerial
photographs taken 1958 and planetable surveys 1963
Polyconic projection. 1927 North American datum
10,000-foot grid based on Nevada coordinate system, west zone
1000-meter Universal Transverse Mercator grid ticks,
zone 11, shown in blue
Certain land lines are omitted because of insufficient data



ROAD CLASSIFICATION
Light-duty
Unimproved
USGS
Historical File
Topographic Division
LIDA WASH, NEV.
N3730—W11730/15
1963
AMS 2459 II—SERIES V796

THIS MAP COMPLIES WITH NATIONAL MAP ACCURACY STANDARDS
FOR SALE BY U. S. GEOLOGICAL SURVEY, DENVER 25, COLORADO OR WASHINGTON 25, D. C.
A FOLDER DESCRIBING TOPOGRAPHIC MAPS AND SYMBOLS IS AVAILABLE ON REQUEST

2350
APR 2 1 1965