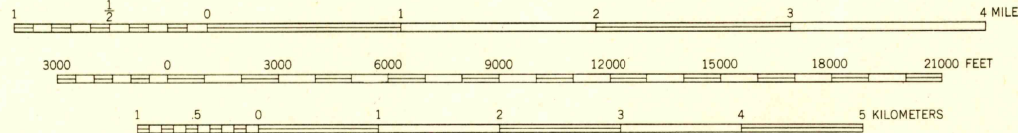


Mapped, edited, and published by the Geological Survey

Control by Missouri River Commission,
USGS, and USC&GS
Topography by multiplex methods from aerial photographs
taken 1945 and by plane-table surveys 1934-1935
Field check 1948

Polycyclic projection, 1927 North American datum
10,000-foot grid based on Missouri coordinate system,
central zone
Red tint indicates area in which only
landmark buildings are shown

TRUE NORTH
MAGNETIC NORTH
APPROXIMATE MEAN
DECLINATION, 1948



CONTOUR INTERVAL 20 FEET

DOTTED LINES REPRESENT HALF-INTERVAL CONTOURS

THIS MAP COMPLIES WITH NATIONAL MAP ACCURACY STANDARDS

FOR SALE BY U. S. GEOLOGICAL SURVEY, FEDERAL CENTER, DENVER, COLORADO OR WASHINGTON 25, D. C.
A FOLDER DESCRIBING TOPOGRAPHIC MAPS AND SYMBOLS IS AVAILABLE ON REQUEST

ROAD CLASSIFICATION

HARD-SURFACE ALL WEATHER ROADS DRY WEATHER ROADS
Heavy-duty ———— LANE IS LANE Improved dirt ————
Medium-duty ———— LANE IS LANE Unimproved dirt ————
Loose surface, graded, or narrow hard-surface ————
U. S. Route ———— State Route ————

COLUMBIA, MO.
N3845-W9215/15

EDITION OF 1950

