

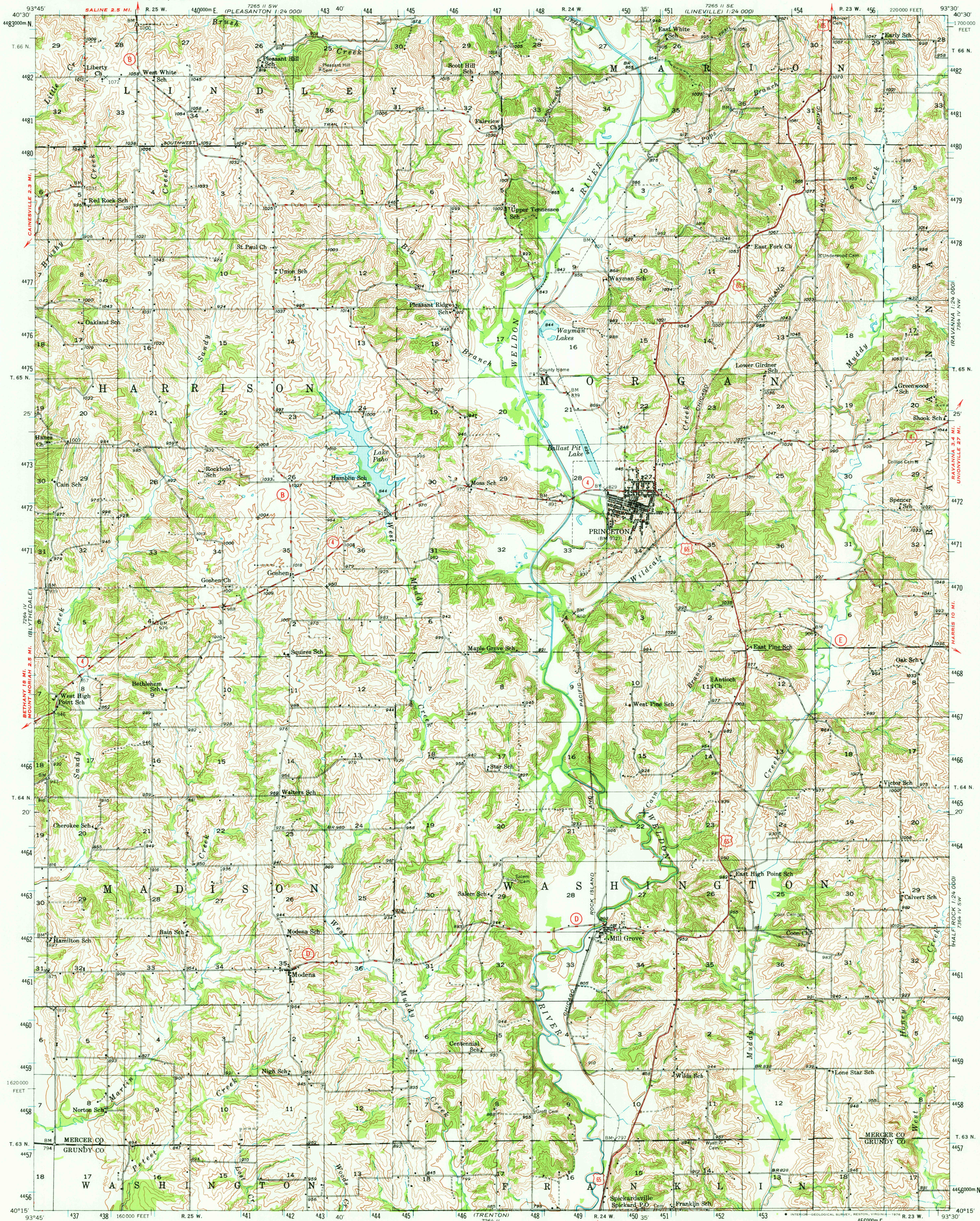
7265 II SW
(1:24,000)

UNITED STATES
DEPARTMENT OF THE INTERIOR
GEOLOGICAL SURVEY

STATE OF MISSOURI

PRINCETON QUADRANGLE
MISSOURI
15 MINUTE SERIES (TOPOGRAPHIC)

7265 II SW
(1:24,000)



Mapped, edited, and published by the Geological Survey

Control by USGS and USCGS

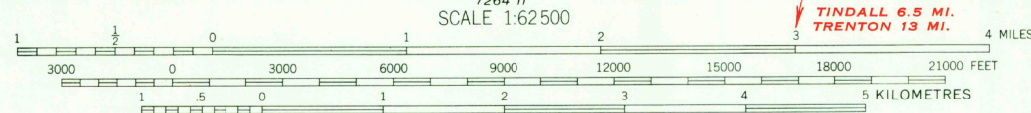
Culture and drainage in part compiled from aerial photographs taken 1939

Topography by plane-table methods, 1946

Polyconic projection. 1927 North American datum

10000-foot grid based on Missouri coordinate system, central zone

1000-metre Universal Transverse Mercator grid ticks, zone 15, shown in blue



CONTOUR INTERVAL 20 FEET
NATIONAL GEODETIC VERTICAL DATUM OF 1929

ROAD CLASSIFICATION
HARD-SURFACE ALL WEATHER ROADS DRY WEATHER ROADS
Heavy-duty ———— LANE'S LANE Improved dirt ————
Medium-duty ———— LANE'S LANE Unimproved dirt ————
Loose-surface, graded, or narrow hard-surface ————
U. S. Route ———— State Route ————

PRINCETON, MO.
N4015—W9330/15

1946

AMS 7264 I—SERIES V779

THIS MAP COMPLIES WITH NATIONAL MAP ACCURACY STANDARDS
FOR SALE BY U. S. GEOLOGICAL SURVEY, DENVER, COLORADO 80225, OR RESTON, VIRGINIA 22092
AND THE DIVISION OF RESEARCH AND TECHNICAL INFORMATION
MISSOURI DEPARTMENT OF NATURAL RESOURCES, ROLLA, MISSOURI 65401
A FOLDER DESCRIBING TOPOGRAPHIC MAPS AND SYMBOLS IS AVAILABLE ON REQUEST