

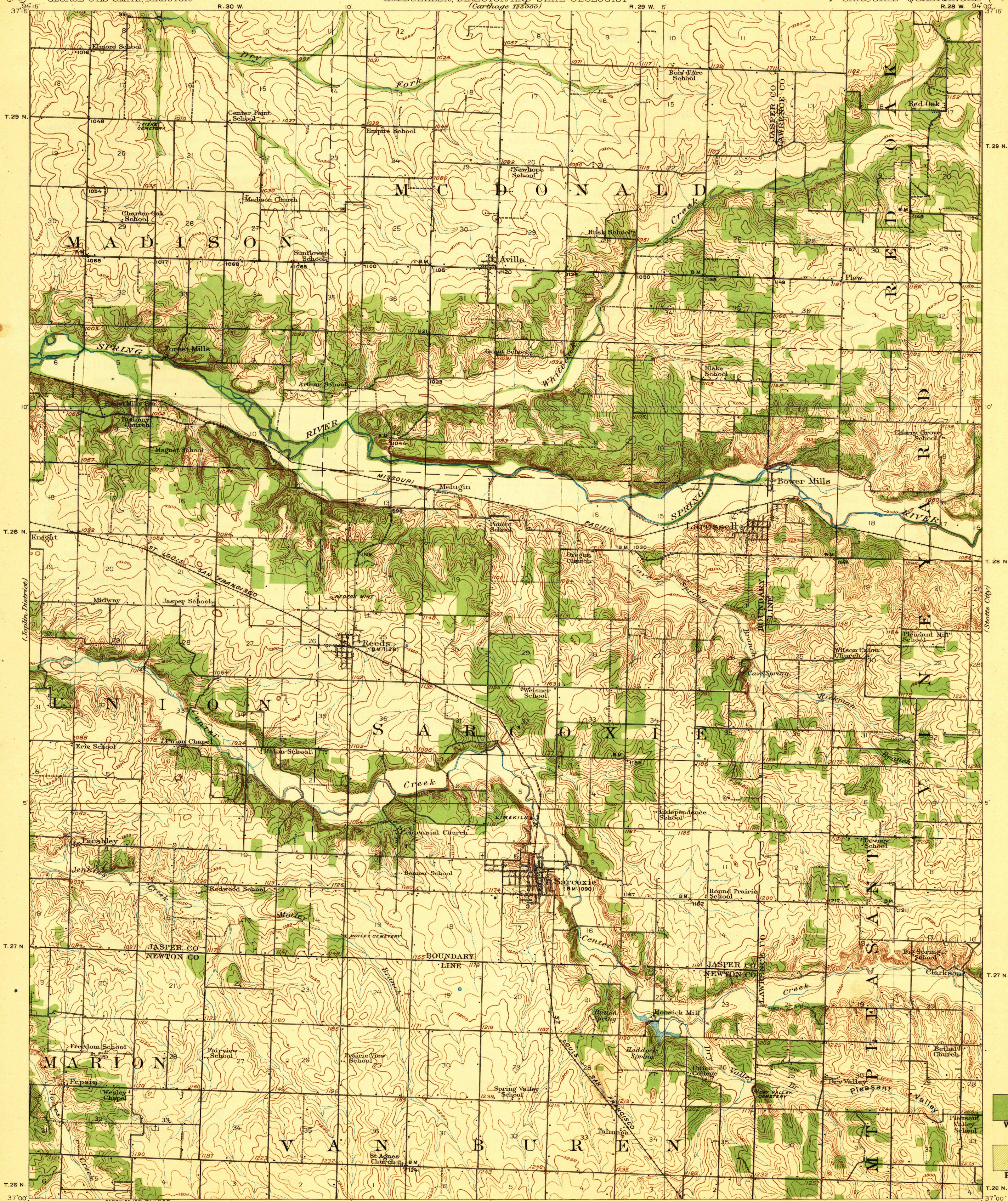
(Carthage)  
125000

DEPARTMENT OF THE INTERIOR  
ALBERT B. FALL, SECRETARY  
U.S. GEOLOGICAL SURVEY  
GEORGE OTIS SMITH, DIRECTOR

TOPOGRAPHY  
STATE OF MISSOURI  
BUREAU OF GEOLOGY AND MINES  
H.A. BUEHLER, DIRECTOR AND STATE GEOLOGIST  
(Carthage 125000)

MISSOURI  
SARCOXIE QUADRANGLE  
R. 28 W. 94° 00' 37' 15"

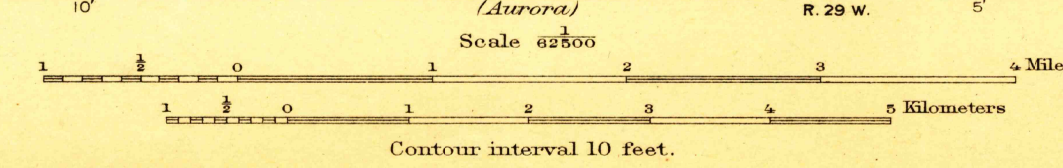
(Greenfield)  
125000



(Neosho)  
125000

C.H. Birdseye, Chief Topographic Engineer.  
W.H. Herron, Geographer in charge.  
Topography by R.L. Harrison and F.L. Whaley.  
South half from map of Aurora quadrangle.  
Control by J.H. Wilson, J.R. Ellis, Geo. T. Hawkins,  
F.L. Whaley, and G.P. Featherston.  
Surveyed in 1919. Aurora portion in 1910.

Whaley  
Harrison  
Aurora



Polyconic projection, North American datum.  
APPROXIMATE MEAN  
DECLINATION, 1919

SARCOXIE  
Edition of 1921.