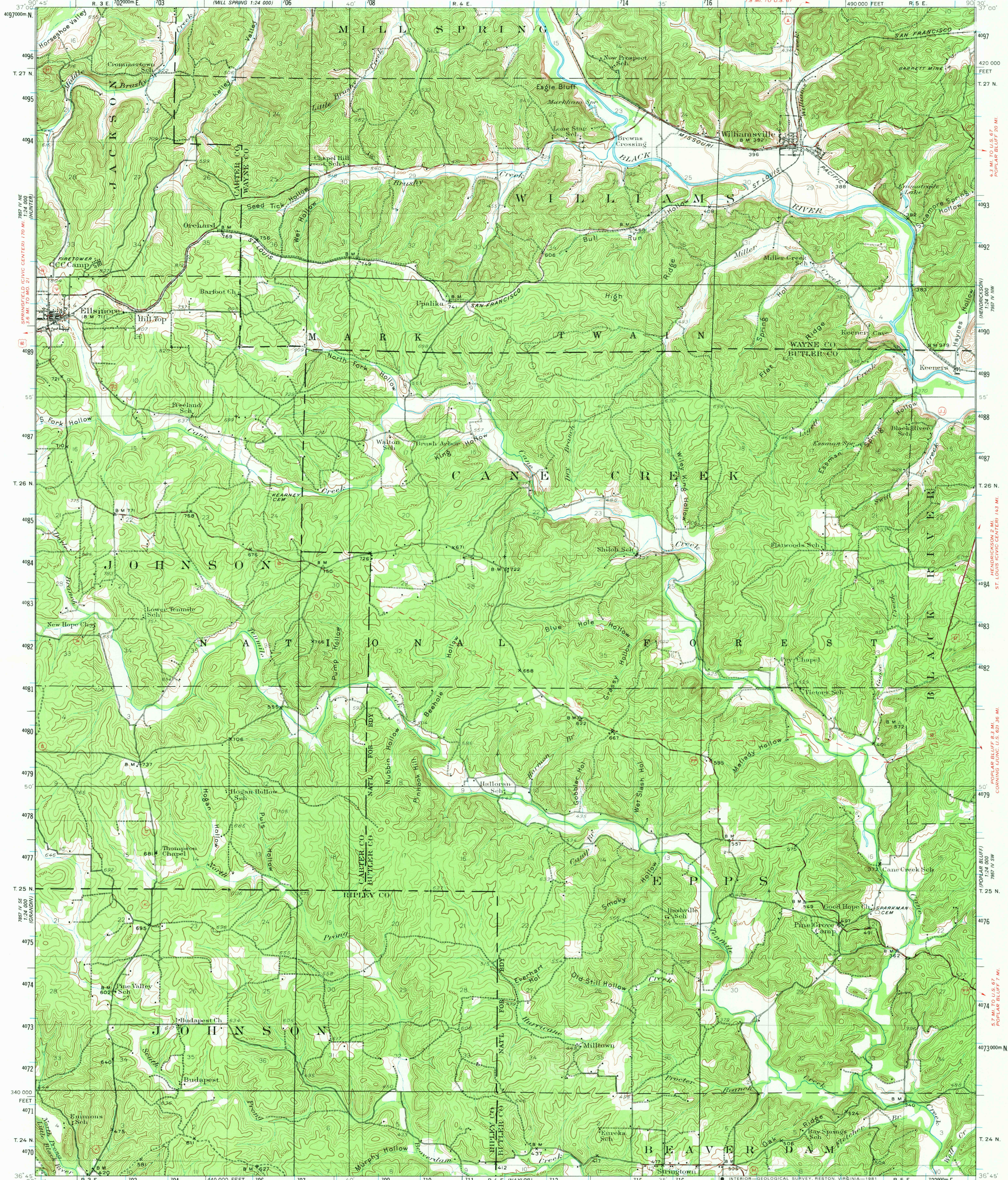


UNITED STATES
DEPARTMENT OF THE INTERIOR
GEOLOGICAL SURVEY

STATE OF MISSOURI
GEOLOGICAL SURVEY AND WATER RESOURCES

MISSOURI
WILLIAMSVILLE QUADRANGLE



Topography by C.L. Sadler, H.S. Milsted,
M.J. Harden, W.A. Tinney, J.M. Holmes,
A.W. Plushnick, M.G. Handy, and L.H. Bray
Surveyed in 1931-1932 and 1934

ROAD CLASSIFICATION
Heavy-duty ——— Light-duty ———
Medium-duty ——— Unimproved dirt ———
U.S. Route ——— State Route ———

UTM GRID AND 1984 MAGNETIC NORTH
DECLINATION AT CENTER OF SHEET
There may be private inholdings within
the boundaries of the National or State
reservations shown on this map

SCALE 1:62,500
CONTOUR INTERVAL 20 FEET
NATIONAL GEODETIC VERTICAL DATUM OF 1929

FOR SALE BY U.S. GEOLOGICAL SURVEY, DENVER, COLORADO 80225, OR RESTON, VIRGINIA 22092,
AND THE DIVISION OF GEOLOGY AND LAND SURVEY
MISSOURI DEPARTMENT OF NATURAL RESOURCES, ROLLA, MISSOURI 65401
A FOLDER DESCRIBING TOPOGRAPHIC MAPS AND SYMBOLS IS AVAILABLE ON REQUEST



Polyconic projection, 1927 North American datum
10,000-foot grid based on Missouri (East)
rectangular coordinate system
1000-meter Universal Transverse Mercator grid ticks,
zone 15, shown in blue
To place on the predicted North American Datum 1983
move the projection lines 3 meters south and
10 meters east
WILLIAMSVILLE, MO.
N 3645—W 9030/15

1934
DMA 7857 I—SERIES V779

NOV 27 19