

CAMPBELL HILL  
1:62 500

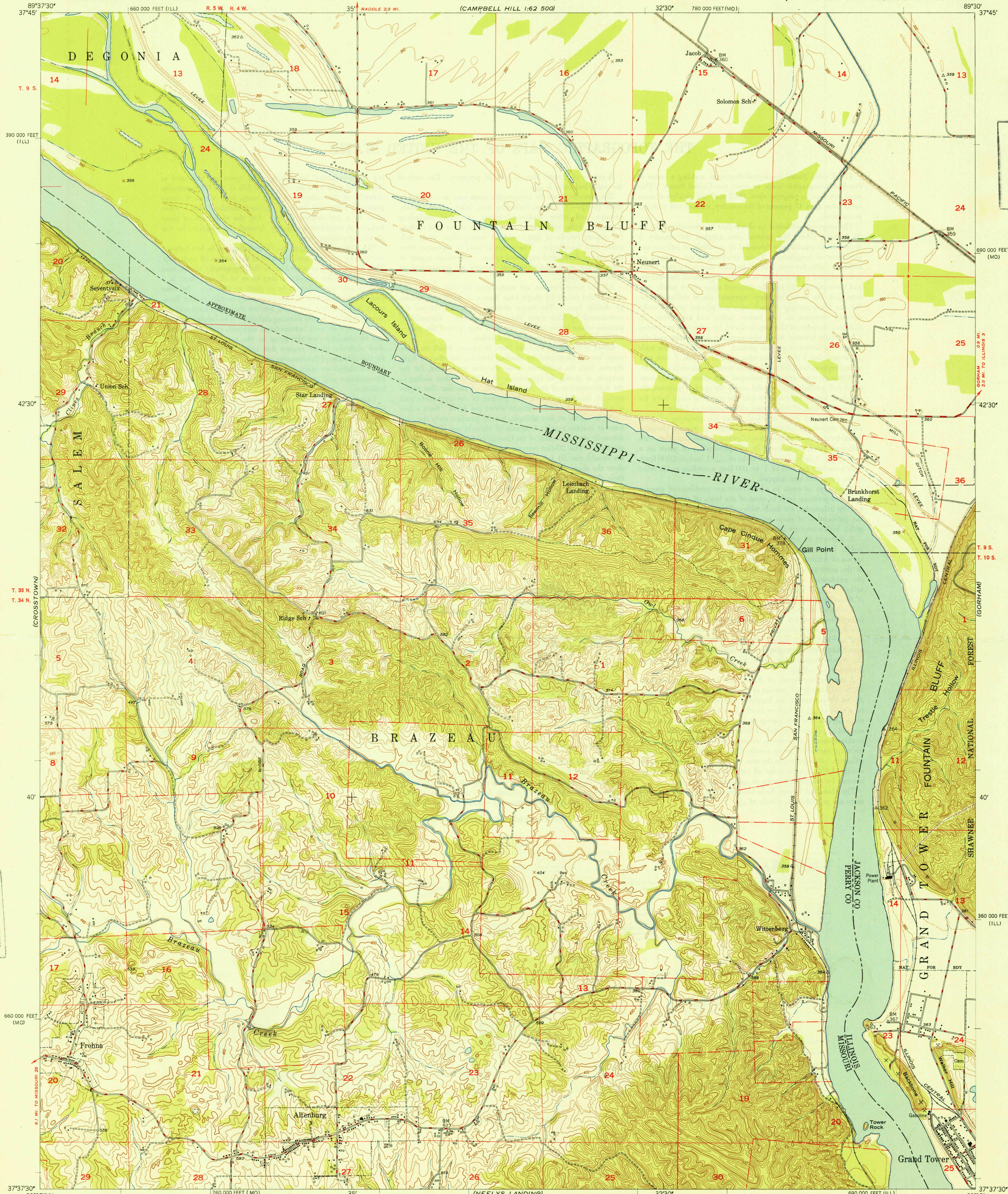
MURPHYSBORO  
1:62 500

UNITED STATES  
DEPARTMENT OF THE INTERIOR  
GEOLOGICAL SURVEY

U. S. G. S.  
FILE COPY  
Inspection and Editing

UNITED STATES  
DEPARTMENT OF THE ARMY  
CORPS OF ENGINEERS  
(CAMPBELL HILL 1:62 500)

ALTENBURG QUADRANGLE  
MISSOURI-ILLINOIS  
7.5 MINUTE SERIES (TOPOGRAPHIC)

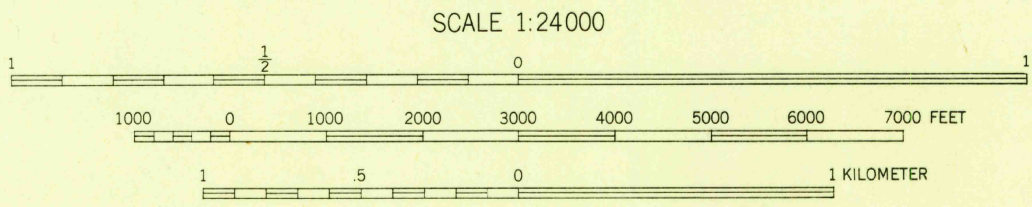


U. S. G. S.  
FILE COPY  
Inspection and Editing

U. S. G. S.  
FILE COPY  
Inspection and Editing

Maped, edited, and published by the Geological Survey  
Control by Mississippi River Commission,  
USED, USC&GS, and USGS  
Topography from aerial photographs by multiplex methods  
and by plane-table surveys 1947  
Aerial photographs taken 1946  
Polyconic projection, 1927 North American Datum  
10,000 foot grid based on Illinois Coordinate System,  
West Zone, and Missouri Coordinate System, East Zone

TRUE NORTH  
MAGNETIC NORTH  
APPROXIMATE MEAN  
DECLINATION, 1947



CONTOUR INTERVAL 20 FEET  
DASHED LINES REPRESENT HALF-INTERVAL CONTOURS  
DATUM IS MEAN SEA LEVEL

THIS MAP COMPLIES WITH NATIONAL MAP ACCURACY STANDARDS  
FOR SALE BY U. S. GEOLOGICAL SURVEY, WASHINGTON 25, D. C.

USGS  
Historical File  
Topographic Division

ROAD CLASSIFICATION  
HARD-SURFACE ALL WEATHER ROADS  
Heavy-duty 4 LANE 16 LANE  
Medium-duty 4 LANE 16 LANE  
Loose-surface or narrow hard-surface  
DRY WEATHER ROADS  
Improved dirt  
Unimproved dirt

WOODLAND  
Woods—Brushwood  
Orchard

U. S. G. S.  
FILE COPY  
Inspection and Editing

ALTENBURG, MO.-ILL.  
N3737.5—W8930/7.5  
PRINTED 1948

DEC 1 1948

4245