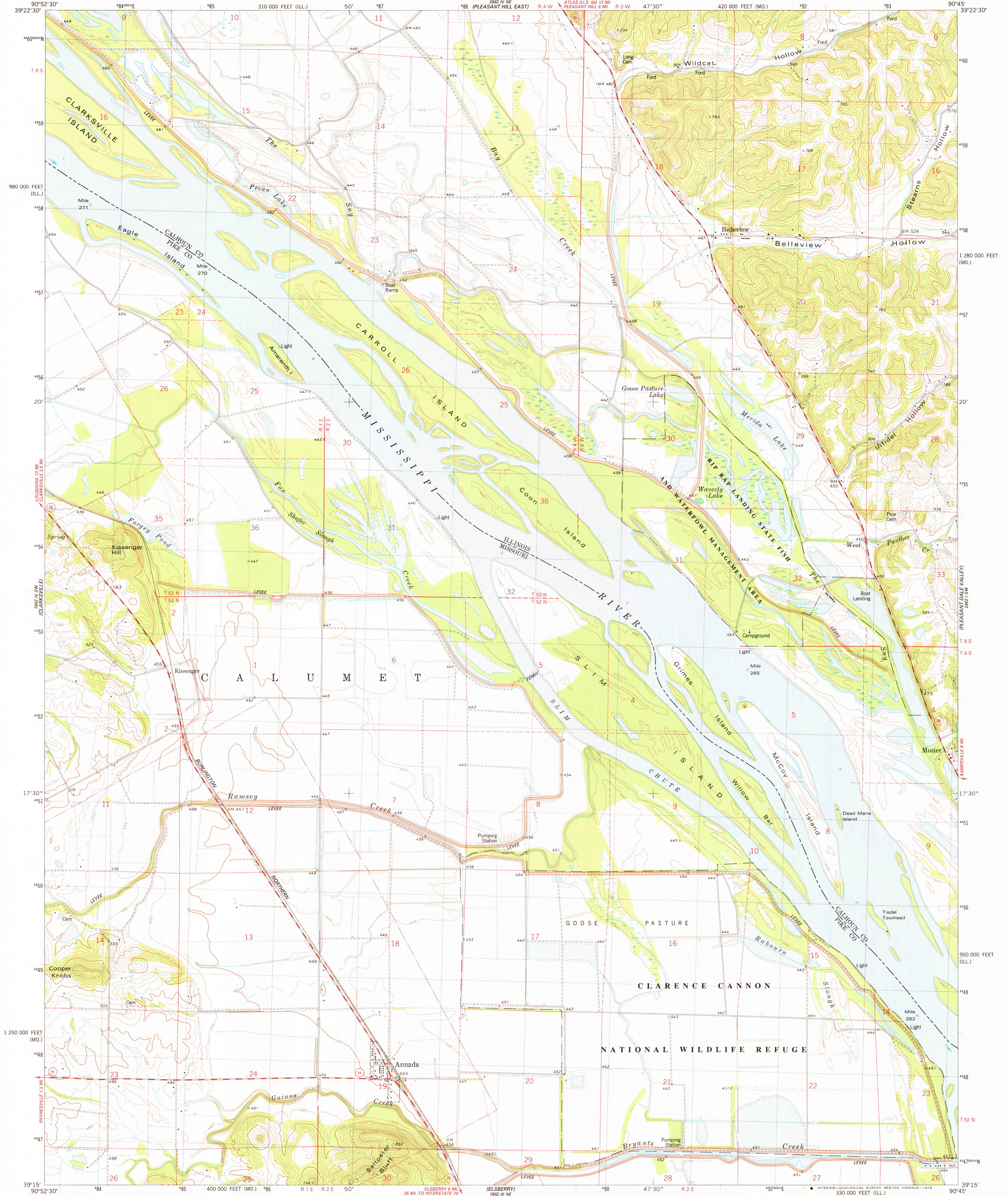


UNITED STATES
DEPARTMENT OF THE INTERIOR
GEOLOGICAL SURVEY

ANNADA QUADRANGLE
MISSOURI-ILLINOIS
7.5 MINUTE SERIES (TOPOGRAPHIC)
SE/4 NE/15 QUADRANGLE

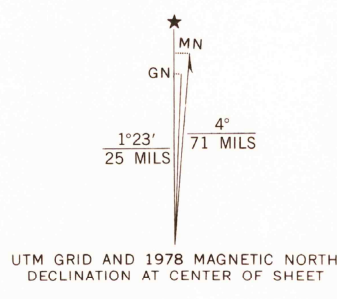


Mapped, edited, and published by the Geological Survey

Control by USGS and NOS/NOAA
Topography by photogrammetric methods from aerial photographs
taken 1972 and 1974 and in part by the Corps of Engineers
Field checked 1975. Map edited 1978

Projection: Missouri coordinate system, east zone
(transverse Mercator)
10,000-foot grid ticks based on Missouri coordinate system,
east zone and Illinois coordinate system, west zone
1,000-meter Universal Transverse Mercator grid, zone 15
1927 North American datum

Fine red dashed lines indicate selected fence and field lines where
generally visible on aerial photographs. This information is unchecked



THIS MAP COMPLIES WITH NATIONAL MAP ACCURACY STANDARDS
FOR SALE BY U.S. GEOLOGICAL SURVEY, DENVER, COLORADO 80225, OR RESTON, VIRGINIA 22092.
AND THE DIVISION OF RESEARCH AND TECHNICAL INFORMATION
MISSOURI DEPARTMENT OF NATURAL RESOURCES, ROLLA, MISSOURI 65401
AND STATE GEOLOGICAL SURVEY, URBANA, ILLINOIS 61801
A FOLDER DESCRIBING TOPOGRAPHIC MAPS AND SYMBOLS IS AVAILABLE ON REQUEST

ROAD CLASSIFICATION
Primary highway, hard surface ——— Light-duty road, hard or improved surface
Secondary highway, hard surface ——— Unimproved road
Interstate Route ——— U.S. Route ——— State Route
SEP 18 1978
ANNADA, MO.-ILL.
SE/4 NE/15 QUADRANGLE
N3915-W9045/7.5
1978
AMS 7862 IV SE-SERIES V879