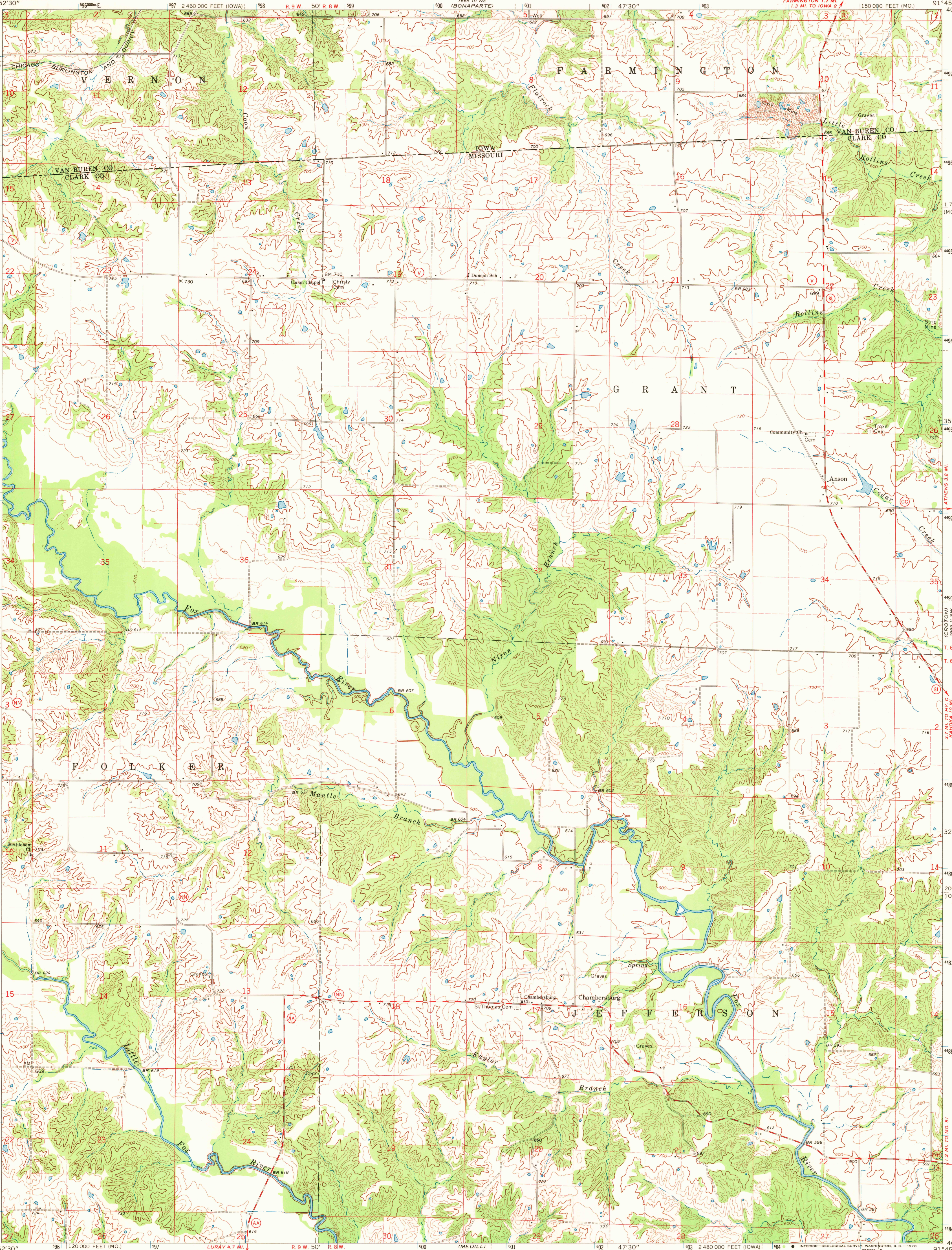
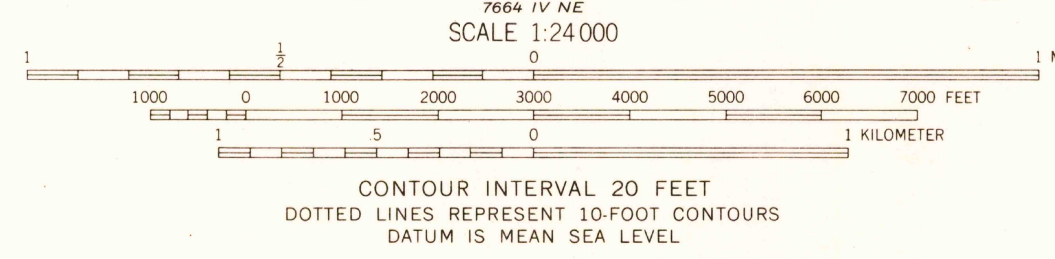
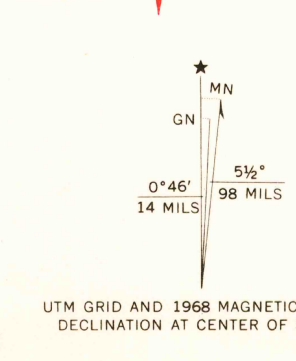


UNITED STATES
DEPARTMENT OF THE INTERIOR
GEOLOGICAL SURVEY

ANSON QUADRANGLE
MISSOURI-IOWA
7.5 MINUTE SERIES (TOPOGRAPHIC)



Maped, edited, and published by the Geological Survey
Control by USGS and USC&GS
Topography by photogrammetric methods from aerial
photographs taken 1965. Field checked 1968
Polyconic projection. 1927 North American datum
10,000-foot grids based on Missouri coordinate system, east zone
and Iowa coordinate system, south zone
1000-meter Universal Transverse Mercator grid ticks,
zone 15, shown in blue
Fine red dashed lines indicate selected fence and field lines where
generally visible on aerial photographs. This information is unchecked



CONTOUR INTERVAL 20 FEET
DOTTED LINES REPRESENT 10-FOOT CONTOURS
DATUM IS MEAN SEA LEVEL
THIS MAP COMPLIES WITH NATIONAL MAP ACCURACY STANDARDS
FOR SALE BY U. S. GEOLOGICAL SURVEY, DENVER, COLORADO 80225, OR WASHINGTON, D. C. 20242,
MISSOURI GEOLOGICAL SURVEY, ROLLA, MISSOURI 65401,
AND IOWA GEOLOGICAL SURVEY, IOWA CITY, IOWA 52240
A FOLDER DESCRIBING TOPOGRAPHIC MAPS AND SYMBOLS IS AVAILABLE ON REQUEST

USGS
Historical File
Topographic Division



ROAD CLASSIFICATION
Secondary highway, all weather, Light-duty road, all weather,
hard surface improved surface
Unimproved road, fair or dry
weather
State Route

U.S.G.S.
FILE COPY
TOPOGRAPHIC DIVISION

ANSON, MO. - IOWA
N4030-W9145/7.5
1968
AMS 7665 III SE-SERIES V879

3290
SEP 8 1970