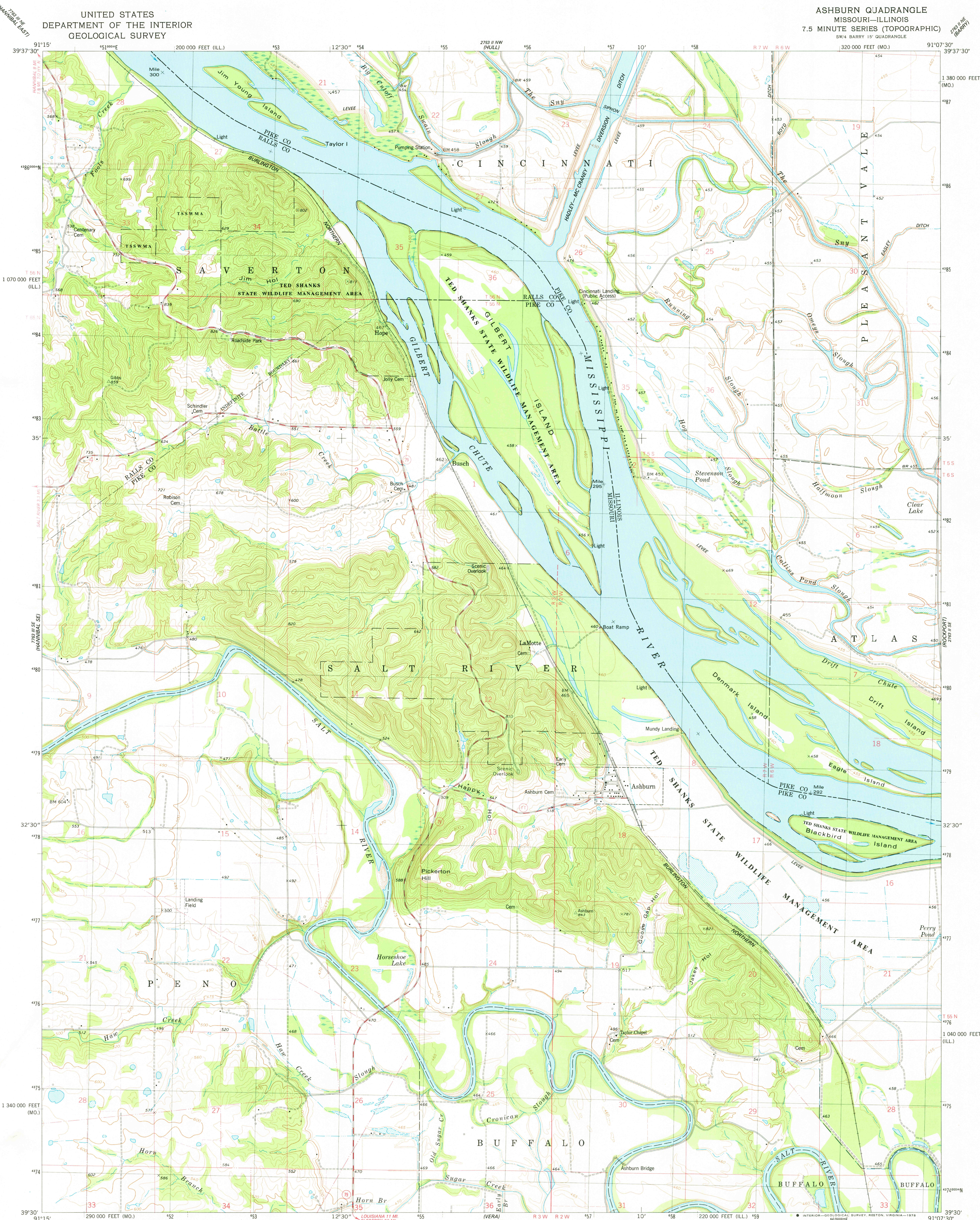


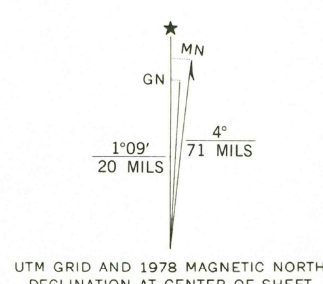
UNITED STATES
DEPARTMENT OF THE INTERIOR
GEOLOGICAL SURVEY

ASHBURN QUADRANGLE
MISSOURI-ILLINOIS
7.5 MINUTE SERIES (TOPOGRAPHIC)
SW/4 BARRY 15' QUADRANGLE



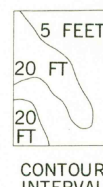
Mapped, edited, and published by the Geological Survey

Control by USGS and NOS/NOAA
Topography by photogrammetric methods from aerial photographs taken 1972 and 1974. Field checked 1975. Map edited 1978
Projection: Missouri coordinate system, east zone (transverse Mercator)
10,000-foot grid ticks based on Missouri coordinate system, east zone and Illinois coordinate system, west zone
1000-meter Universal Transverse Mercator grid, zone 15
1927 North American datum
Unidentified bounded areas in Missouri are part of the Ted Shanks State Wildlife Management Area
Fine red dashed lines indicate selected fence and field lines where generally visible on aerial photographs. This information is unchecked



SCALE 1:24 000
1 0000 0 1000 2000 3000 4000 5000 6000 7000 FEET
1 0 .5 1 2 3 4 5 6 7 8 9 10 KILOMETER
CONTOUR INTERVAL 5 AND 20 FEET
NATIONAL GEODETIC VERTICAL DATUM OF 1929

THIS MAP COMPLIES WITH NATIONAL MAP ACCURACY STANDARDS
FOR SALE BY U. S. GEOLOGICAL SURVEY, DENVER, COLORADO 80225, OR RESTON, VIRGINIA 22092,
AND THE DIVISION OF RESEARCH AND TECHNICAL INFORMATION
MISSOURI DEPARTMENT OF NATURAL RESOURCES, ROLLA, MISSOURI 65401
AND STATE GEOLOGICAL SURVEY, URBANA, ILLINOIS 61801
A FOLDER DESCRIBING TOPOGRAPHIC MAPS AND SYMBOLS IS AVAILABLE ON REQUEST



ROAD CLASSIFICATION
Primary highway, hard surface
Secondary highway, hard surface
Unimproved road
Light-duty road, hard or improved surface
Interstate Route
U. S. Route
State Route

USGS
Historical File
Topographic Division

ASHBURN, MO.—ILL.
SW/4 BARRY 15' QUADRANGLE
N3930—W9107.5/7.5
1978

AMS 7763 11 SW—SERIES V879

DEC 18 1978